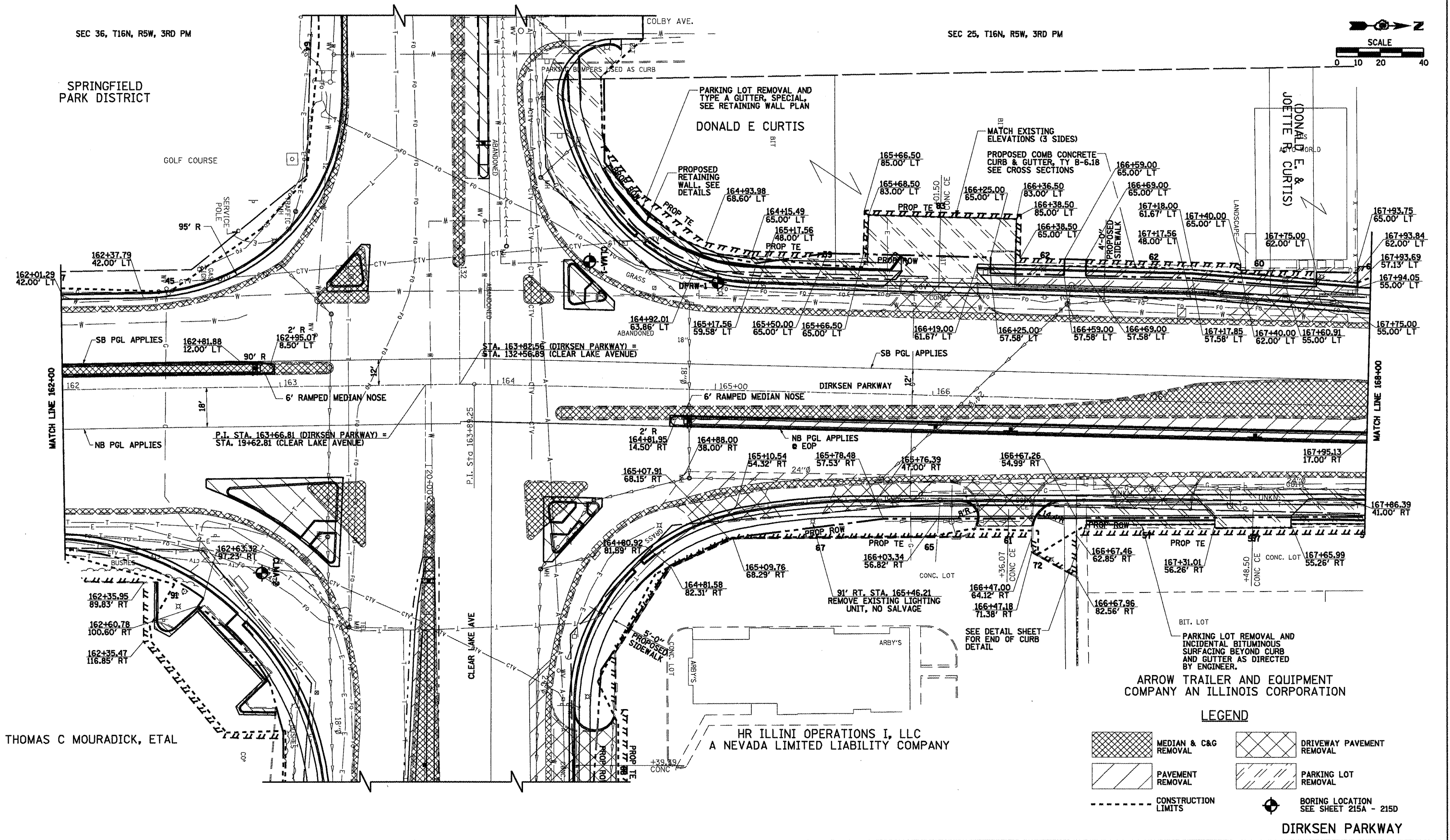
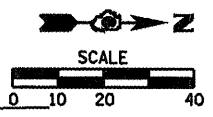


F.A.I. 72, F.A.P. 67, F.A.P. 75 & F.A.P. 668
 D-6 SPFLD-CLRLAKE DIRKSEN 2002

F.A. RTE.	SECTION	COUNTY	TOTAL SHEETS	SHEET NO.
	..	SANGAMON	363	86
STA. 162+00.00 TO STA. 168+00.00				
FED. ROAD DIST. NO. ILLINOIS FED. AID PROJECT				
CONTRACT NO. 72088				



THOMAS C MOURADICK, ETAL

HR ILLINI OPERATIONS I, LLC
 A NEVADA LIMITED LIABILITY COMPANY

ARROW TRAILER AND EQUIPMENT
 COMPANY AN ILLINOIS CORPORATION

LEGEND

- MEDIAN & C&G REMOVAL
- DRIVEWAY PAVEMENT REMOVAL
- PAVEMENT REMOVAL
- PARKING LOT REMOVAL
- CONSTRUCTION LIMITS
- BORING LOCATION SEE SHEET 215A - 215D