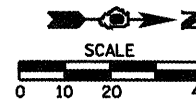
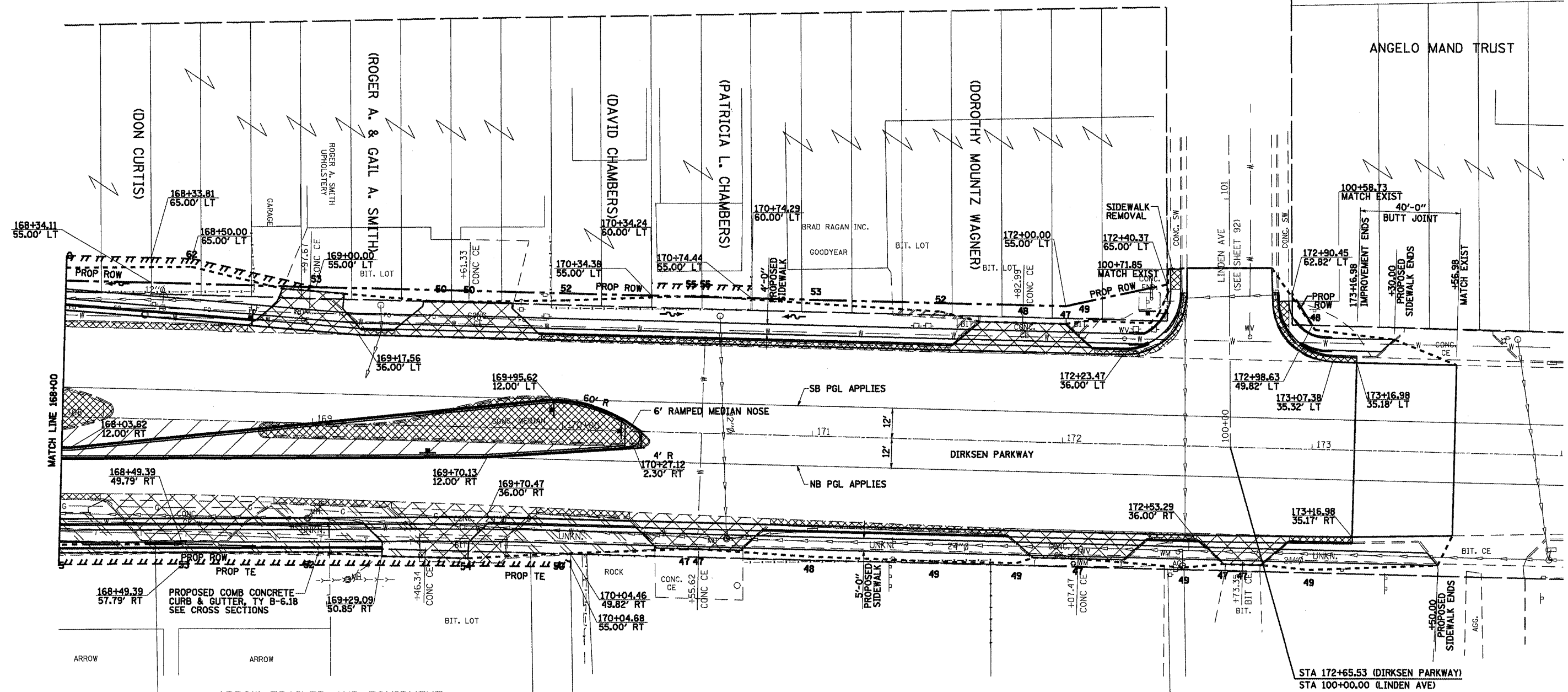


F.A. 72, F.A.P. 67, F.A.P. 75 & F.A.P. 668
 D-6 SPFLD-CLRLAKE DIRKSEN 2002

F.A. RTE.	SECTION	COUNTY	TOTAL SHEETS	SHEET NO.
•	••	SANGAMON	363	88
STA. 168+00.00		TO STA. 173+00.00		
FED. ROAD DIST. NO.		ILLINOIS FED. AID PROJECT		
CONTRACT NO. 72088				



SEC 25, T16N, R5W, 3RD PM



ARROW TRAILER AND EQUIPMENT COMPANY AN ILLINOIS CORPORATION

JAMES L WEAKLY & MARY LOU WEAKLY

STA 172+65.53 (DIRKSEN PARKWAY)
 STA 100+00.00 (LINDEN AVE)

LEGEND

- MEDIAN & C&G REMOVAL
- DRIVEWAY PAVEMENT REMOVAL
- PAVEMENT REMOVAL
- PARKING LOT REMOVAL
- CONSTRUCTION LIMITS