

ARROW TRAILER AND EQUIPMENT COMPANY AN ILLINOIS CORPORATION

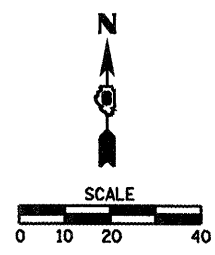
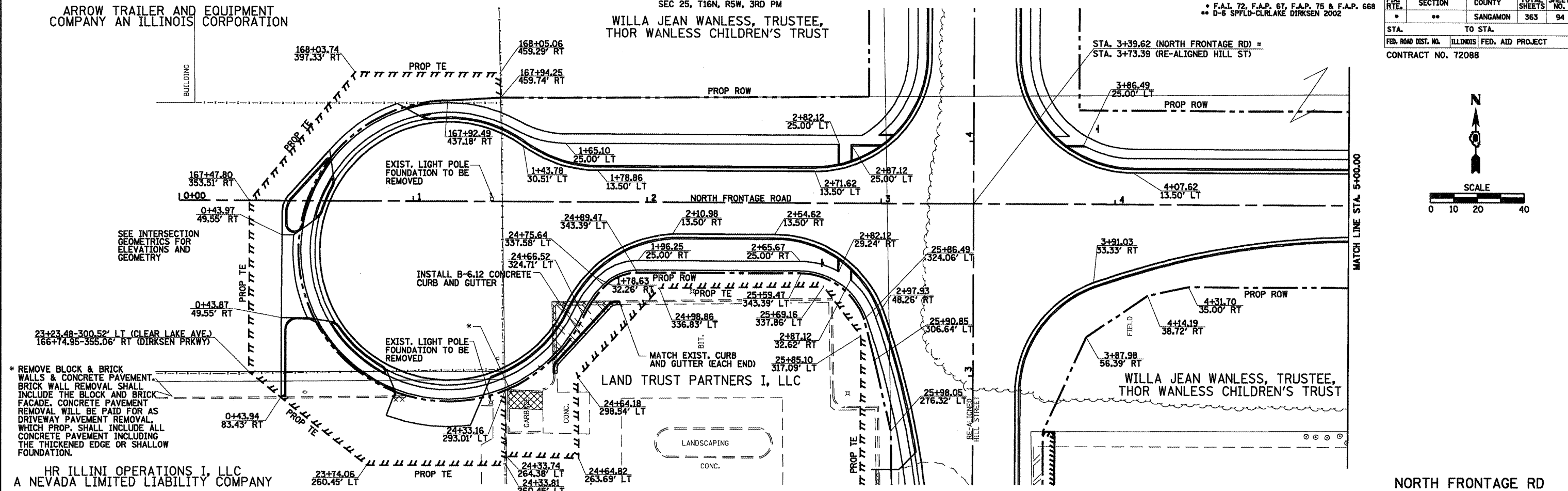
SEC 25, T16N, R5W, 3RD PM  
WILLA JEAN WANLESS, TRUSTEE,  
THOR WANLESS CHILDREN'S TRUST

F.A.I. 72, F.A.P. 6T, F.A.P. 75 & F.A.P. 668  
D-6 SPFLD-CLRLAKE DIRKSEN 2002

F.A. RTE.	SECTION	COUNTY	TOTAL SHEETS	SHEET NO.
*	**	SANGAMON	363	94
STA. TO STA.				
FED. ROAD DIST. NO.		ILLINOIS	FED. AID PROJECT	
CONTRACT NO. 72088				

DATE	BY

DATE	BY



\* REMOVE BLOCK & BRICK WALLS & CONCRETE PAVEMENT. BRICK WALL REMOVAL SHALL INCLUDE THE BLOCK AND BRICK FACADE. CONCRETE PAVEMENT REMOVAL WILL BE PAID FOR AS DRIVEWAY PAVEMENT REMOVAL WHICH PROP. SHALL INCLUDE ALL CONCRETE PAVEMENT INCLUDING THE THICKENED EDGE OR SHALLOW FOUNDATION.

HR ILLINI OPERATIONS I, LLC  
A NEVADA LIMITED LIABILITY COMPANY

