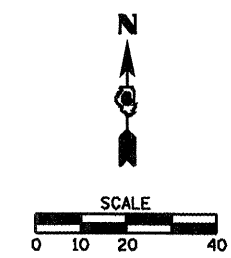


F.A. RTE.	SECTION	COUNTY	TOTAL SHEETS	SHEET NO.
..	..	SANGAMON	363	96
STA. TO STA.		ILLINOIS FED. AID PROJECT		
CONTRACT NO. 72088				

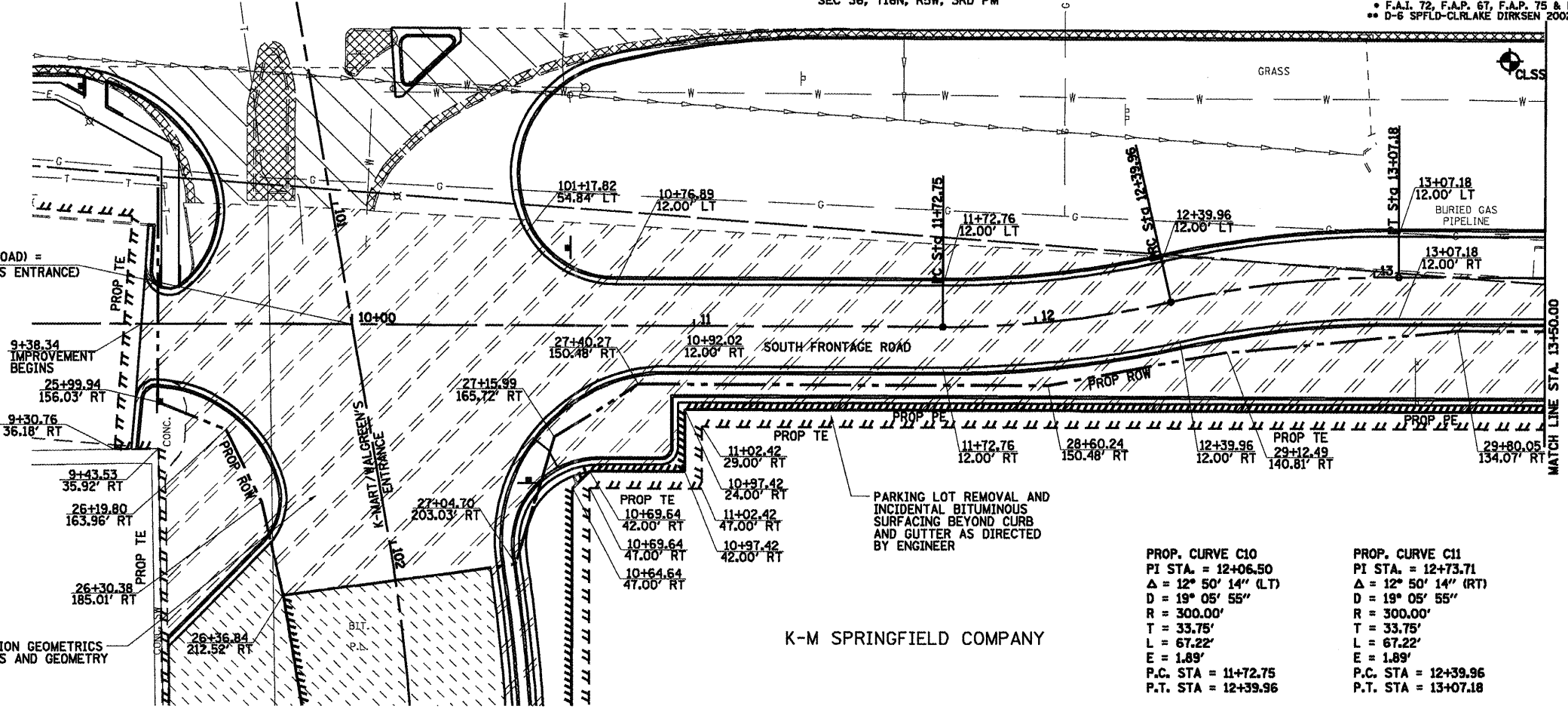


**LEGEND**

- MEDIAN & C&G REMOVAL
- PAVEMENT REMOVAL
- DRIVEWAY PAVEMENT REMOVAL
- PARKING LOT REMOVAL
- CONSTRUCTION LIMITS

BLACKSTONE GROUP-T, LLC

STA. 10+00.00 (SOUTH FRONTAGE ROAD) =  
 STA. 101+35.54 (K-MART/WALGREEN'S ENTRANCE)



**PROP. CURVE C10**  
 PI STA. = 12+06.50  
 $\Delta = 12^\circ 50' 14''$  (LT)  
 $D = 19^\circ 05' 55''$   
 $R = 300.00'$   
 $T = 33.75'$   
 $L = 67.22'$   
 $E = 1.89'$   
 P.C. STA = 11+72.75  
 P.T. STA = 12+39.96

**PROP. CURVE C11**  
 PI STA. = 12+73.71  
 $\Delta = 12^\circ 50' 14''$  (RT)  
 $D = 19^\circ 05' 55''$   
 $R = 300.00'$   
 $T = 33.75'$   
 $L = 67.22'$   
 $E = 1.89'$   
 P.C. STA = 12+39.96  
 P.T. STA = 13+07.18

K-M SPRINGFIELD COMPANY

SEE INTERSECTION GEOMETRICS FOR ELEVATIONS AND GEOMETRY

SOUTH FRONTAGE RD

DATE	BY

DATE	BY

