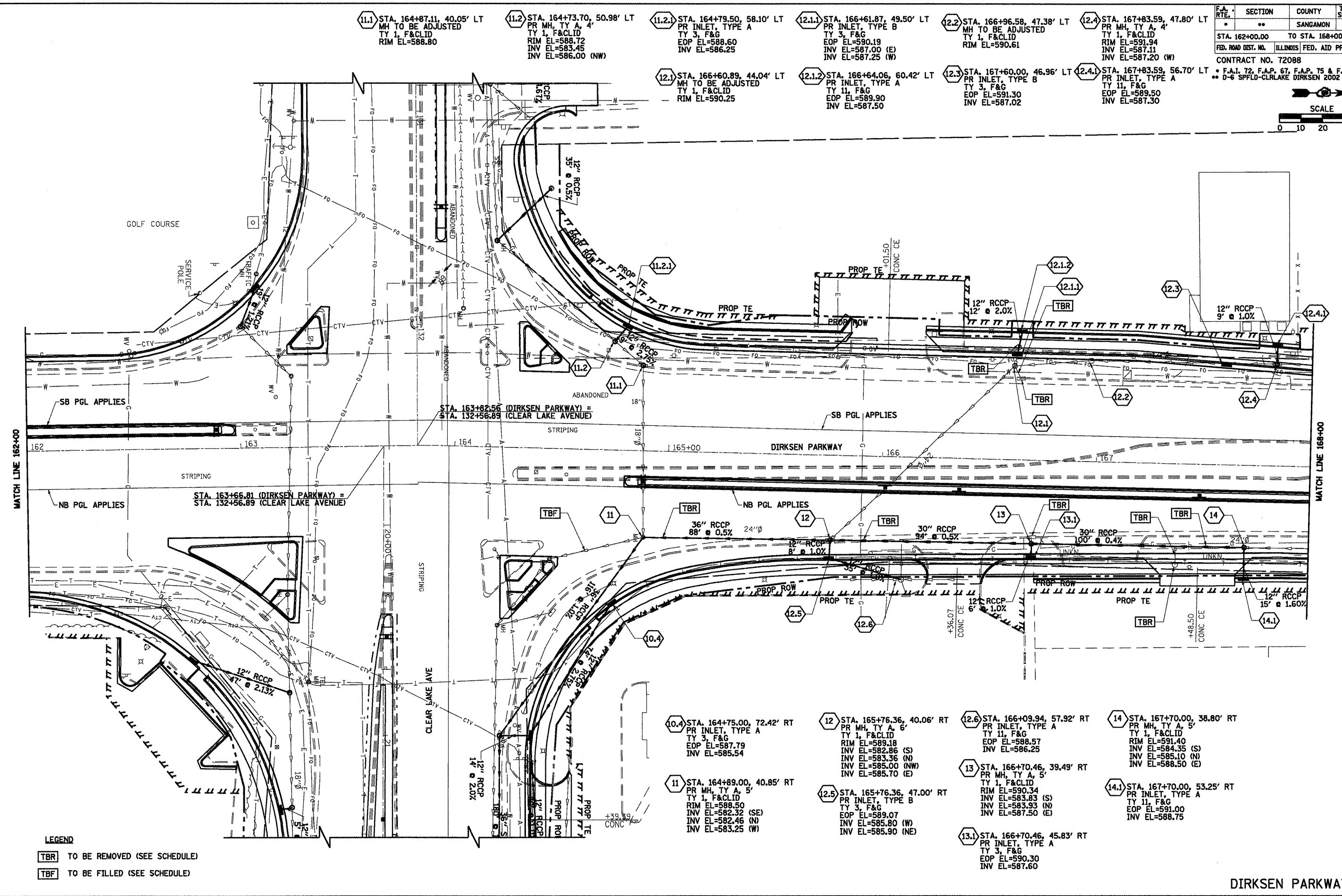
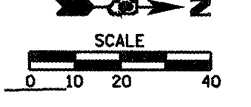


F.A. RTE.	SECTION	COUNTY	TOTAL SHEETS	SHEET NO.
..	..	SANGAMON	363	123
STA. 162+00.00 TO STA. 168+00.00				
FED. ROAD DIST. NO. ILLINOIS FED. AID PROJECT				
CONTRACT NO. 72088				

• F.A.I. 72, F.A.P. 67, F.A.P. 75 & F.A.P. 668
 • D-6 SPFLD-CLRLAKE DIRKSEN 2002



- (11.1) STA. 164+87.11, 40.05' LT
MH TO BE ADJUSTED
TY 1, F&CLID
RIM EL=588.80
- (11.2) STA. 164+73.70, 50.98' LT
PR MH, TY A, 4'
TY 1, F&CLID
RIM EL=588.72
INV EL=583.45
INV EL=586.00 (NW)
- (11.2.1) STA. 164+79.50, 58.10' LT
PR INLET, TYPE A
TY 3, F&G
EOP EL=588.60
INV EL=586.25
- (12.1) STA. 166+61.87, 49.50' LT
PR INLET, TYPE B
TY 3, F&G
EOP EL=590.19
INV EL=587.00 (E)
INV EL=587.25 (W)
- (12.2) STA. 166+96.58, 47.38' LT
MH TO BE ADJUSTED
TY 1, F&CLID
RIM EL=590.61
- (12.4) STA. 167+83.59, 47.80' LT
PR MH, TY A, 4'
TY 1, F&CLID
RIM EL=591.94
INV EL=587.11
INV EL=587.20 (W)

- (12.1.2) STA. 166+60.89, 44.04' LT
MH TO BE ADJUSTED
TY 1, F&CLID
RIM EL=590.25
- (12.1.1) STA. 166+64.06, 60.42' LT
PR INLET, TYPE A
TY 11, F&G
EOP EL=589.90
INV EL=587.50
- (12.3) STA. 167+60.00, 46.96' LT
PR INLET, TYPE B
TY 3, F&G
EOP EL=591.30
INV EL=587.02
- (12.4.1) STA. 167+83.59, 56.70' LT
PR INLET, TYPE A
TY 11, F&G
EOP EL=589.50
INV EL=587.30

- (10.4) STA. 164+75.00, 72.42' RT
PR INLET, TYPE A
TY 3, F&G
EOP EL=587.79
INV EL=585.54
- (11) STA. 164+89.00, 40.85' RT
PR MH, TY A, 5'
TY 1, F&CLID
RIM EL=588.50
INV EL=582.32 (SE)
INV EL=582.46 (N)
INV EL=583.25 (W)
- (12) STA. 165+76.36, 40.06' RT
PR MH, TY A, 6'
TY 1, F&CLID
RIM EL=589.18
INV EL=582.86 (S)
INV EL=583.36 (N)
INV EL=585.00 (NW)
INV EL=585.70 (E)
- (12.5) STA. 165+76.36, 47.00' RT
PR INLET, TYPE B
TY 3, F&G
EOP EL=589.07
INV EL=585.80 (W)
INV EL=585.90 (NE)
- (12.6) STA. 166+09.94, 57.92' RT
PR INLET, TYPE A
TY 11, F&G
EOP EL=588.57
INV EL=586.25
- (13) STA. 166+70.46, 39.49' RT
PR MH, TY A, 5'
TY 1, F&CLID
RIM EL=590.34
INV EL=583.83 (S)
INV EL=583.93 (N)
EOP EL=589.07
INV EL=587.50 (E)
- (13.1) STA. 166+70.46, 45.83' RT
PR INLET, TYPE A
TY 3, F&G
EOP EL=590.30
INV EL=587.60
- (14) STA. 167+70.00, 38.80' RT
PR MH, TY A, 5'
TY 1, F&CLID
RIM EL=591.40
INV EL=584.35 (S)
INV EL=585.10 (N)
INV EL=588.50 (E)
- (14.1) STA. 167+70.00, 53.25' RT
PR INLET, TYPE A
TY 11, F&G
EOP EL=591.00
INV EL=588.75

LEGEND
 [TBR] TO BE REMOVED (SEE SCHEDULE)
 [TBF] TO BE FILLED (SEE SCHEDULE)