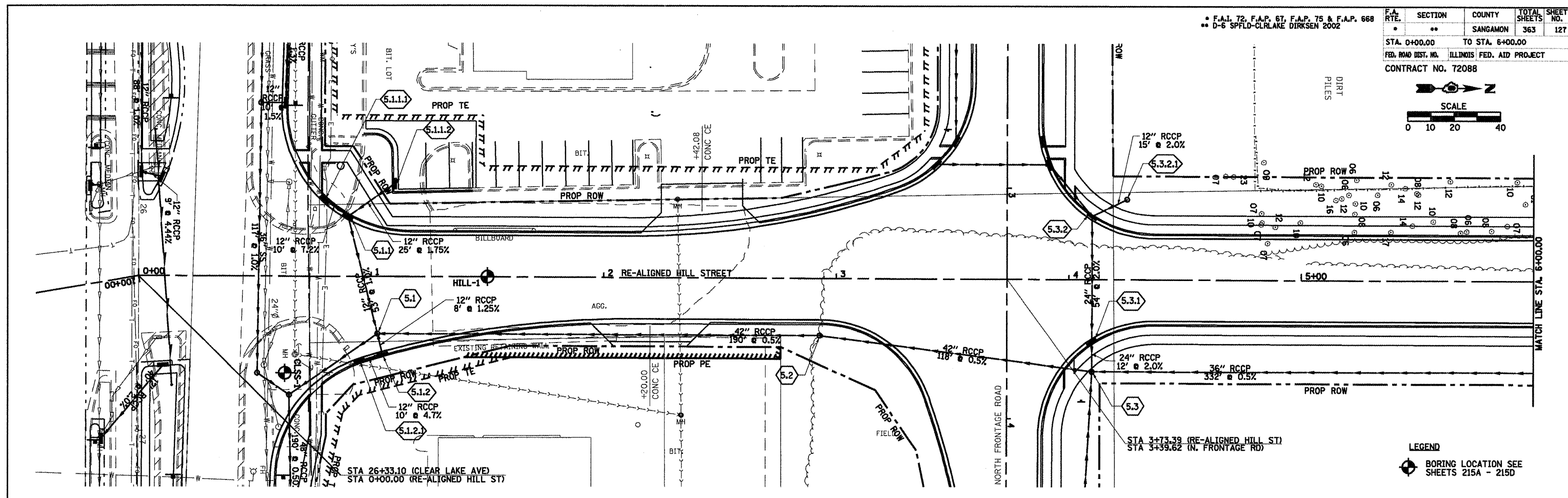


DATE	BY
DATE	BY



DATE	BY
DATE	BY

5.1 STA. 1+02.76, 25.00' RT PR MH, TY A, 5' TY 1, F&CLID RIM EL=582.16 INV EL=573.82 (SE) INV EL=573.92 (N) INV EL=578.96 (E) (W)	5.1.1 STA. 0+90.00, 26.18' LT PR INLET, TYPE B TY 11, F&G RIM EL=582.31 INV EL=579.56 (S) INV EL=579.56 (NW) INV EL=579.46 (E)	5.1.1.1 STA. 0+80.00, 33.44' LT PR INLET, TYPE A TY 11, F&G EOP EL=582.28 INV EL=580.28	5.1.1.2 STA. 1+10.06, 40.38' LT PR INLET, TYPE A TY 11, F&G EOP EL=584.00 INV EL=580.00	5.1.2 STA. 1+05.00, 34.00' RT PR INLET, TYPE B TY 11, F&G EOP EL=581.91 INV EL=579.06 (W) INV EL=579.16 (S)	5.1.2.1 STA. 0+95.00, 36.66' RT PR INLET, TYPE A TY 11, F&G EOP EL=581.88 INV EL=579.63	5.2 STA. 2+92.89, 25.00' RT PR MH, TY A, 5' TY 1, F&CLID RIM EL=585.70 INV EL=577.59 (N) INV EL=577.00 (N) INV EL=574.87 (S)	5.3 STA. 4+10.00, 40.00' RT PR MH, TY A, 6' TY 1, F&CLID RIM EL=588.80 INV EL=577.59 (N) (S) INV EL=580.25 (W) INV EL=577.65 (E)	5.3.1 STA. 4+10.00, 27.54' RT PR MH, TY A, 5' TY 11, F&G RIM EL=587.85 INV EL=580.50 (W) INV EL=581.60 (E)	5.3.2 STA. 4+10.00, 27.54' LT PR MH, TY A, 5' TY 11, F&G RIM EL=587.85 INV EL=581.60 (NW) INV EL=583.87 (NW)	5.3.2.1 STA. 4+25.00, 35.00' LT PR INLET, TYPE A TY 8, GRATE RIM EL=588.00 INV EL=584.17
---	--	---	---	--	---	--	--	---	---	--

