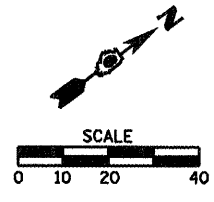


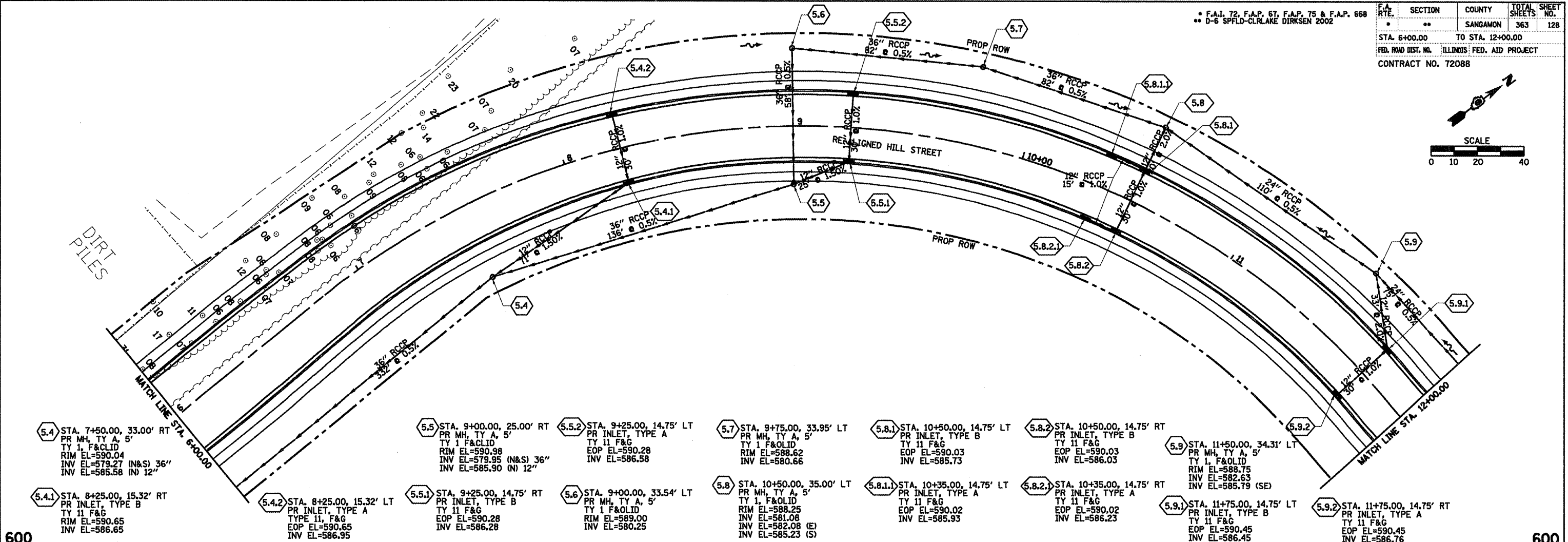
F.A.I. 72, F.A.P. 67, F.A.P. 75 & F.A.P. 668
 D-6 SPFLD-CLRLAKE DIRKSEN 2002

F.A. RTE.	SECTION	COUNTY	TOTAL SHEETS	SHEET NO.
..	..	SANGAMON	363	128
STA. 6+00.00 TO STA. 12+00.00				
FED. ROAD DIST. NO. ILLINOIS FED. AID PROJECT				
CONTRACT NO. 72088				

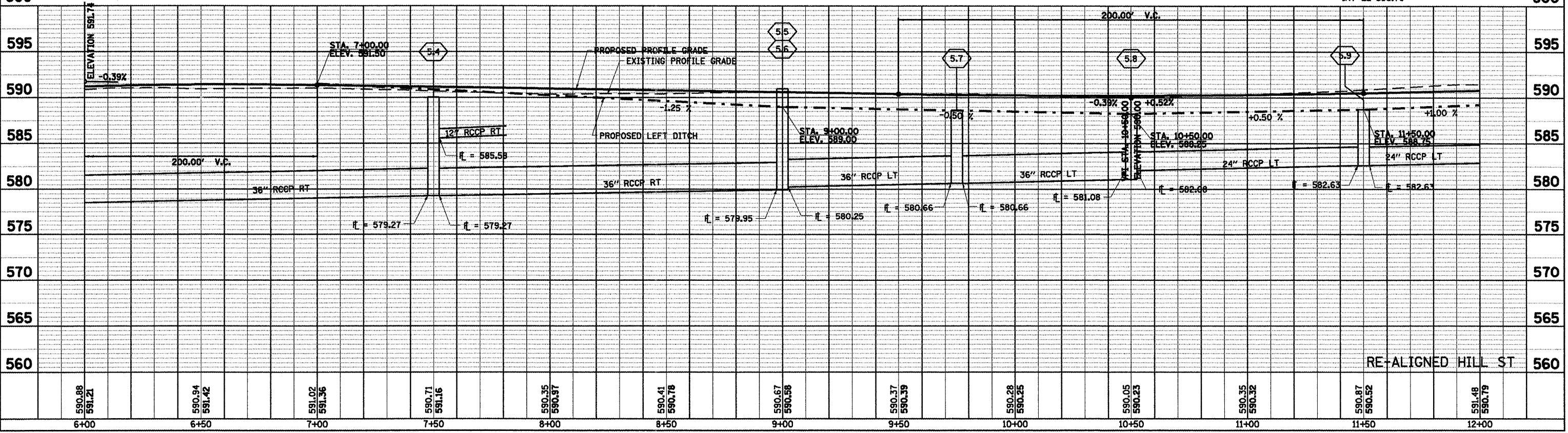


DATE	BY

DATE	BY



5.4 STA. 7+50.00, 33.00' RT PR MH, TY A, 5' TY 1 F&CLID RIM EL=590.04 INV EL=579.27 (N&S) 36" INV EL=585.58 (N) 12"	5.5 STA. 9+00.00, 25.00' RT PR MH, TY A, 5' TY 1 F&CLID RIM EL=590.98 INV EL=579.95 (N&S) 36" INV EL=585.90 (N) 12"	5.5.2 STA. 9+25.00, 14.75' LT PR INLET, TYPE A TY 11 F&G RIM EL=590.28 INV EL=586.58	5.7 STA. 9+75.00, 33.95' LT PR MH, TY A, 5' TY 1 F&OLID RIM EL=588.62 INV EL=580.66	5.8.1 STA. 10+50.00, 14.75' LT PR INLET, TYPE B TY 11 F&G RIM EL=590.03 INV EL=585.73	5.8.2 STA. 10+50.00, 14.75' RT PR INLET, TYPE B TY 11 F&G RIM EL=590.03 INV EL=586.03	5.9 STA. 11+50.00, 34.31' LT PR MH, TY A, 5' TY 1 F&OLID RIM EL=588.75 INV EL=582.63 INV EL=585.79 (SE)		
5.4.1 STA. 8+25.00, 15.32' RT PR INLET, TYPE B TY 11 F&G RIM EL=590.65 INV EL=586.65	5.4.2 STA. 8+25.00, 15.32' LT PR INLET, TYPE A TY 11 F&G RIM EL=590.65 INV EL=586.95	5.5.1 STA. 9+25.00, 14.75' RT PR INLET, TYPE B TY 11 F&G RIM EL=590.28 INV EL=586.28	5.6 STA. 9+00.00, 33.54' LT PR MH, TY A, 5' TY 1 F&OLID RIM EL=589.00 INV EL=580.25	5.8 STA. 10+50.00, 35.00' LT PR MH, TY A, 5' TY 1 F&OLID RIM EL=588.25 INV EL=581.08 INV EL=582.08 (E) INV EL=585.23 (S)	5.8.1.1 STA. 10+35.00, 14.75' LT PR INLET, TYPE A TY 11 F&G RIM EL=590.02 INV EL=585.93	5.8.2.1 STA. 10+35.00, 14.75' RT PR INLET, TYPE A TY 11 F&G RIM EL=590.02 INV EL=586.23	5.9.1 STA. 11+75.00, 14.75' LT PR INLET, TYPE B TY 11 F&G RIM EL=590.45 INV EL=586.45	5.9.2 STA. 11+75.00, 14.75' RT PR INLET, TYPE A TY 11 F&G RIM EL=590.45 INV EL=586.76



590.88	591.21	590.94	591.42	591.02	591.36	590.71	591.16	590.95	590.87	590.41	590.78	590.67	590.66	590.37	590.39	590.28	590.25	590.05	590.23	590.35	590.32	590.87	590.62	591.48	590.79
6+00	6+50	7+00	7+50	8+00	8+50	9+00	9+50	10+00	10+50	11+00	11+50	12+00													