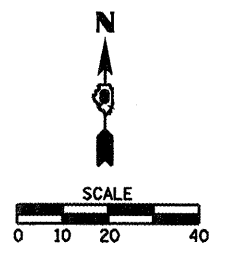


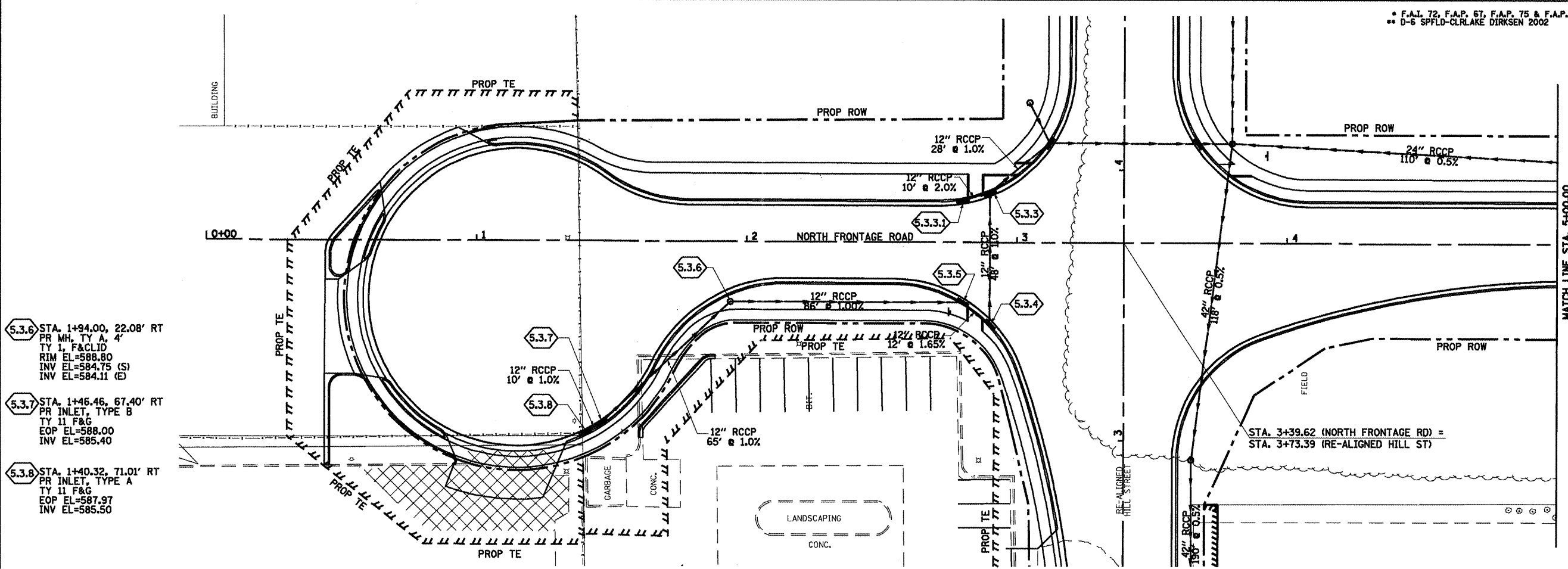
F.A.P. 72, F.A.P. 67, F.A.P. 75 & F.A.P. 668
 D-6 SPFLD-CLRLAKE DIRKSEN 2002

F.A. RTE.	SECTION	COUNTY	TOTAL SHEETS	SHEET NO.
..	..	SANGAMON	363	130
STA. 0+00.00		TO STA. 5+00.00		
FED. ROAD DIST. NO.		ILLINOIS FED. AID PROJECT		
CONTRACT NO. 72088				



DATE	BY

DATE	BY



- 5.3.6 STA. 1+94.00, 22.08' RT
PR MH, TY A, 4"
TY 1, F&CLD
RIM EL=588.80
INV EL=584.75 (S)
INV EL=584.11 (E)
- 5.3.7 STA. 1+46.46, 67.40' RT
PR INLET, TYPE B
TY 11 F&G
EOP EL=588.00
INV EL=585.40
- 5.3.8 STA. 1+40.32, 71.01' RT
PR INLET, TYPE A
TY 11 F&G
EOP EL=587.97
INV EL=585.50

- 5.3.3 STA. 2+90.00, 18.46' LT
PR INLET, TYPE B
TY 11 F&G
EOP EL=586.84
INV EL=581.90
- 5.3.3.1 STA. 2+80.00, 15.45' LT
PR INLET, TYPE A
TY 11 F&G
EOP EL=586.85
INV EL=582.10
- 5.3.4 STA. 2+90.00, 30.35' RT
PR INLET, TYPE B
TY 11 F&G
EOP EL=586.68
INV EL=582.40
- 5.3.5 STA. 2+80.00, 22.08' RT
PR INLET, TYPE B
TY 11 F&G
EOP EL=586.78
INV EL=583.25 (W)
INV EL=582.60 (SE)

