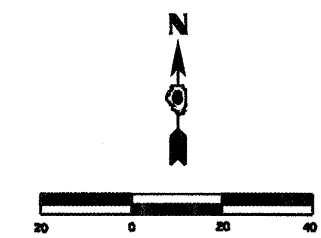
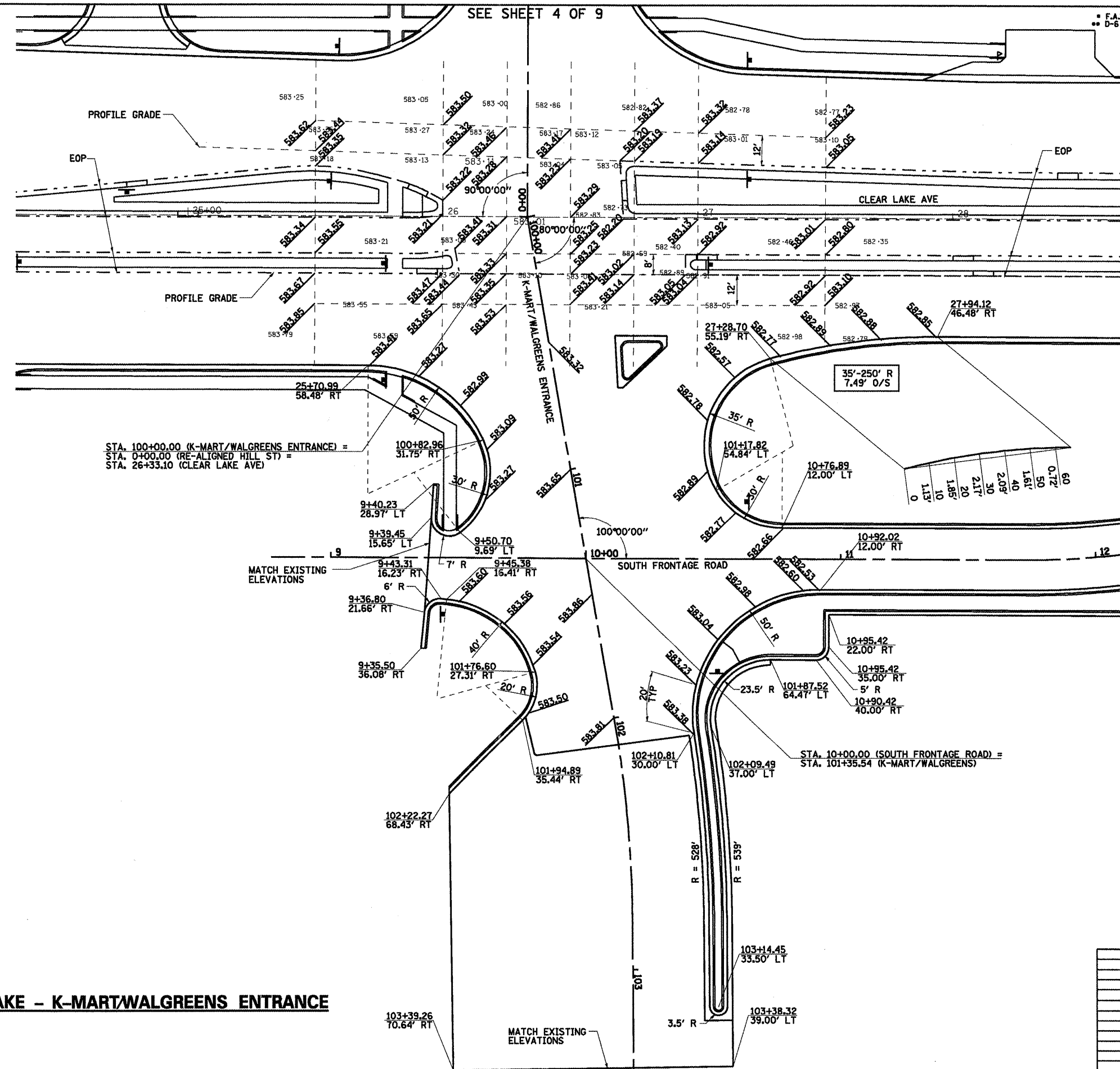


F.A.P. RTE.	SECTION	COUNTY	TOTAL SHEETS	SHEET NO.
	..	SANGAMON	363	169
STA.		TO STA.		
FED. ROAD DIST. NO.		ILLINOIS FED. AID PROJECT		
CONTRACT NO. 72088				

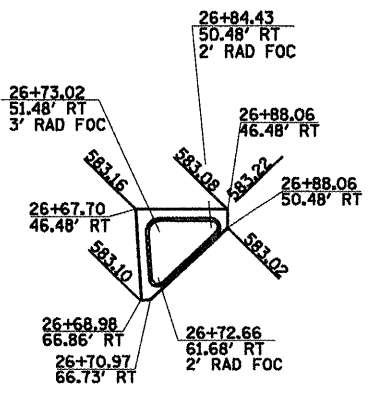


LEGEND

- XX.XX PROPOSED FINISHED ELEVATION
- XXX.XX EXISTING SURFACE ELEVATION

STA. 100+00.00 (K-MART/WALGREENS ENTRANCE) =
 STA. 0+00.00 (RE-ALIGNED HILL ST) =
 STA. 26+33.10 (CLEAR LAKE AVE)

STA. 10+00.00 (SOUTH FRONTAGE ROAD) =
 STA. 101+35.54 (K-MART/WALGREENS)



ISLANDS PER STD 606301

CLEAR LAKE - K-MART/WALGREENS ENTRANCE

REVISIONS	
NAME	DATE

ILLINOIS DEPARTMENT OF TRANSPORTATION
INTERSECTION GEOMETRICS
 SCALE: 1"=20'
 DATE 7/13/05
 DRAWN BY NJV
 CHECKED BY PBB