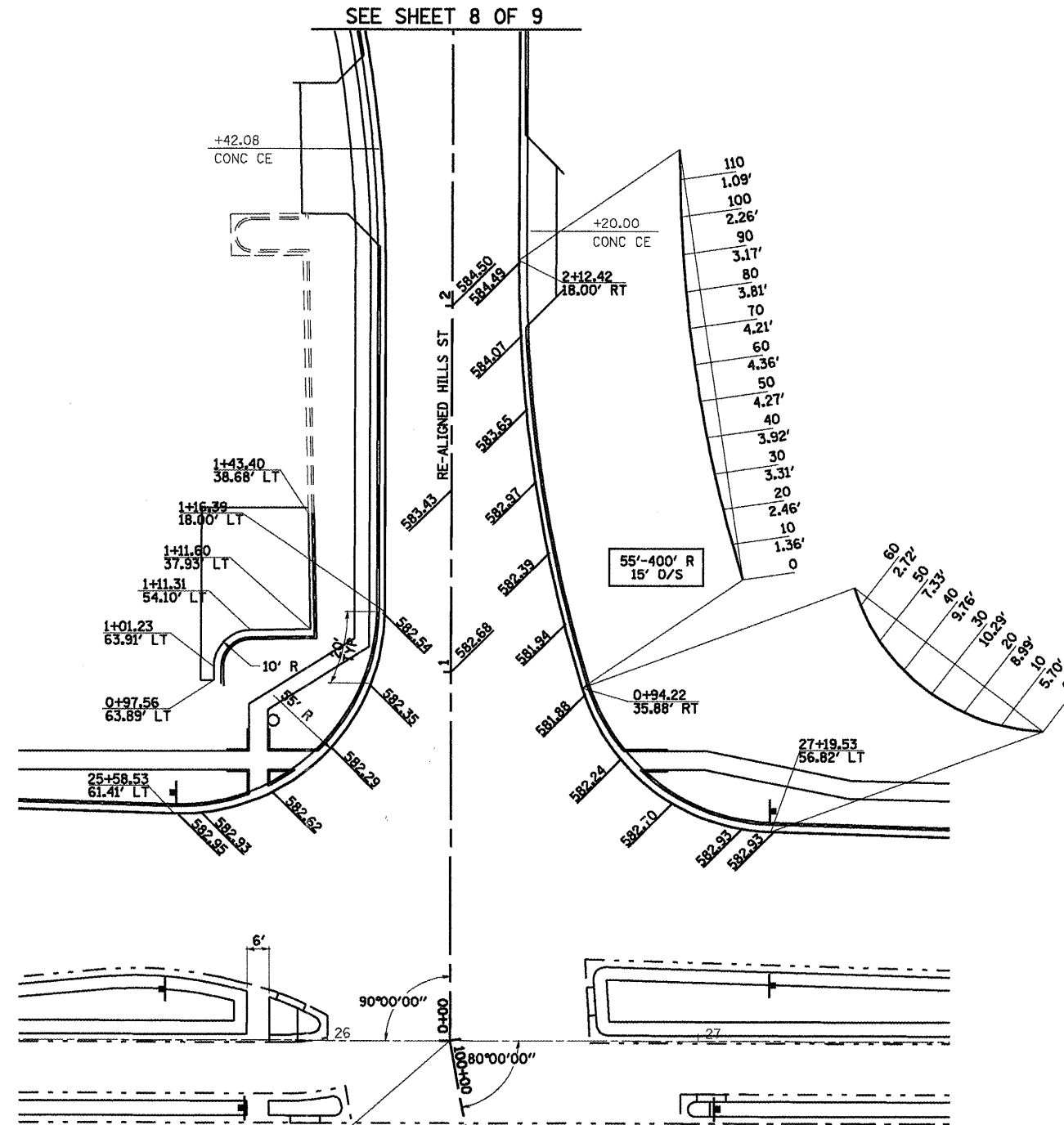
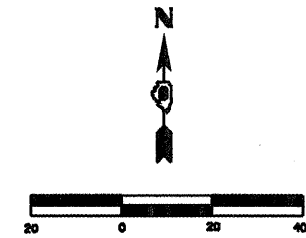


F.A.P. RTE.	SECTION	COUNTY	TOTAL SHEETS	SHEET NO.
*	**	SANGAMON	363	170
STA.		TO STA.		
FED. ROAD DIST. NO.	ILLINOIS	FED. AID PROJECT		
CONTRACT NO. 72088				



STA. 100+00.00 (K-MART/WALGREENS ENTRANCE) =
 STA. 0+00.00 (RE-ALIGNED HILL ST) =
 STA. 26+33.10 (CLEAR LAKE AVE)

SEE SHEET 3 OF 9

CLEAR LAKE - RE-ALIGNED HILL ST

LEGEND

XXX.XX PROPOSED FINISHED ELEVATION

SHEET 4 OF 9

REVISIONS	
NAME	DATE

ILLINOIS DEPARTMENT OF TRANSPORTATION

INTERSECTION GEOMETRICS

SCALE: 1"=20'
 DATE 7/13/05

DRAWN BY NJV
 CHECKED BY RMD