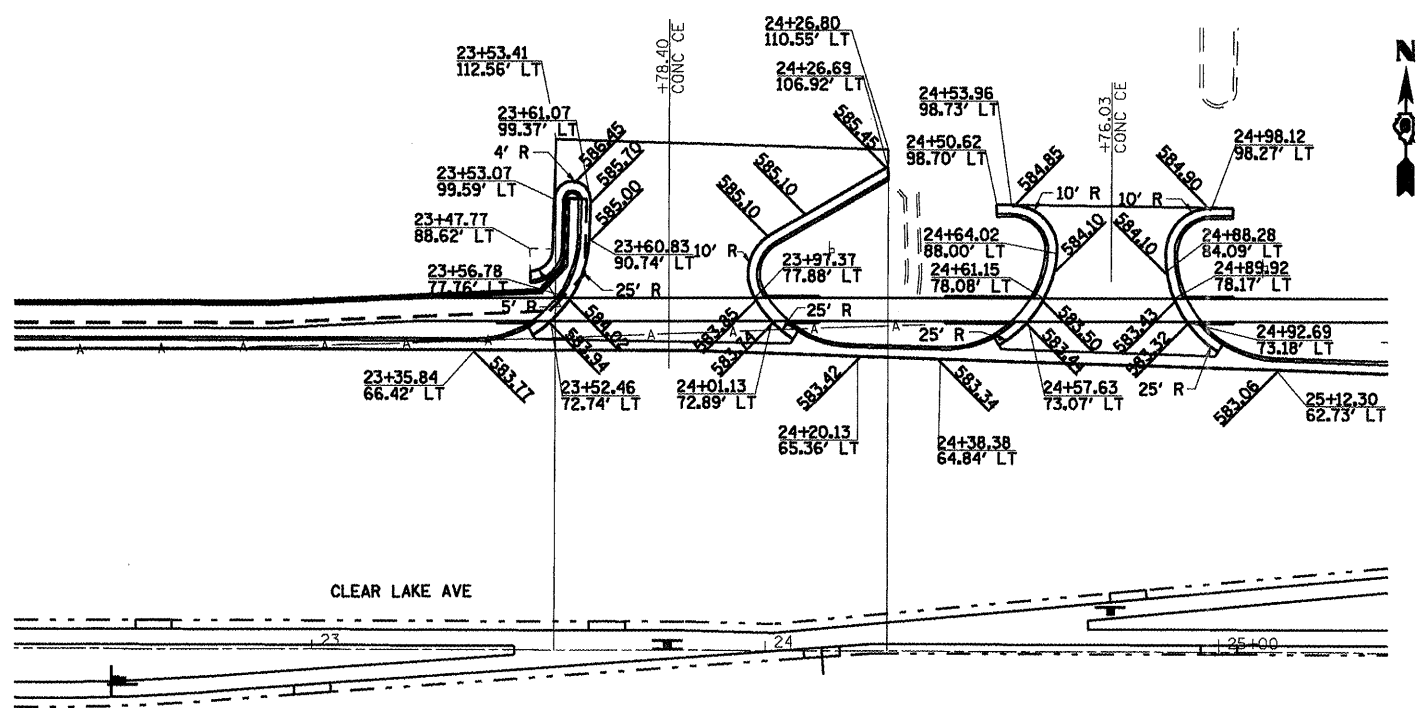
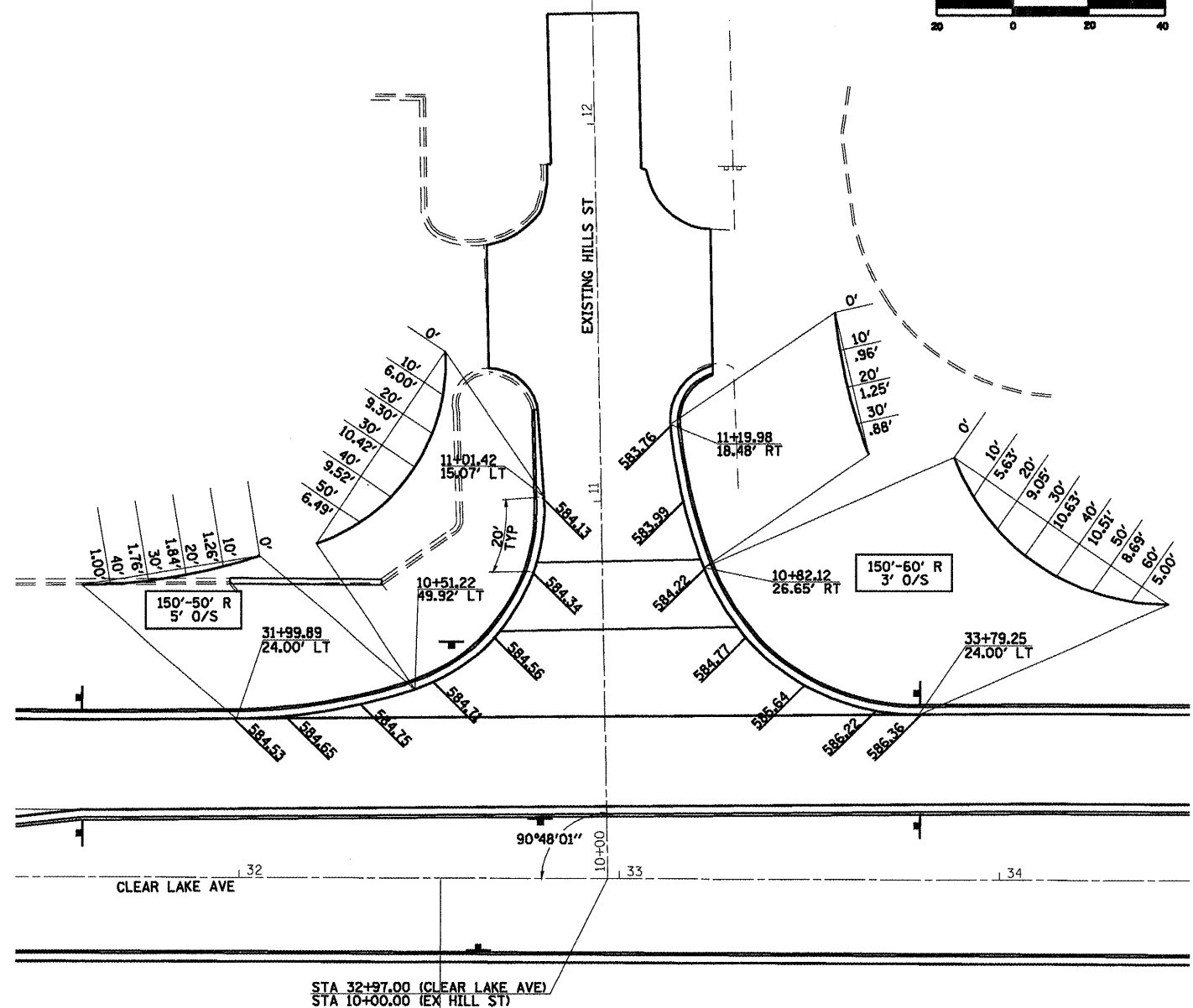


F.A.P. 72, F.A.P. 67, F.A.P. 75 & F.A.P. 668
 D-6 SPFLD-CLRLAKE DIRKSEN 2002

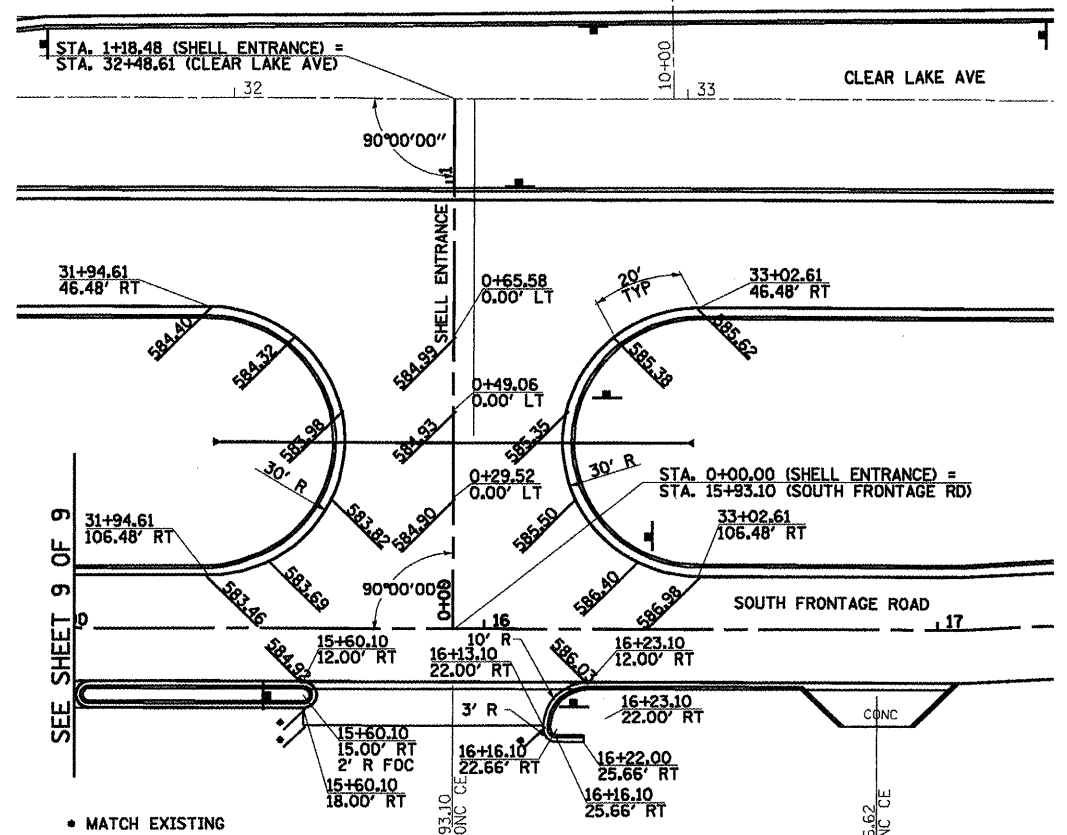
F.A.P. RTE.	SECTION	COUNTY	TOTAL SHEETS	SHEET NO.
*	**	SANGAMON	363	172
STA. TO STA.				
FED. ROAD DIST. NO. ILLINOIS FED. AID PROJECT				
CONTRACT NO. 72088				



CLEAR LAKE - HARDEE'S / WENDY'S ENTRANCE



CLEAR LAKE - EXISTING HILL ST



CLEAR LAKE - SHELL ENTRANCE

LEGEND

XXX.XX PROPOSED FINISHED ELEVATION

REVISIONS	
NAME	DATE

ILLINOIS DEPARTMENT OF TRANSPORTATION
INTERSECTION GEOMETRICS
 SCALE: 1"=20'
 DATE 7/13/05
 DRAWN BY NJV
 CHECKED BY RMD