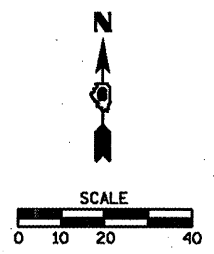
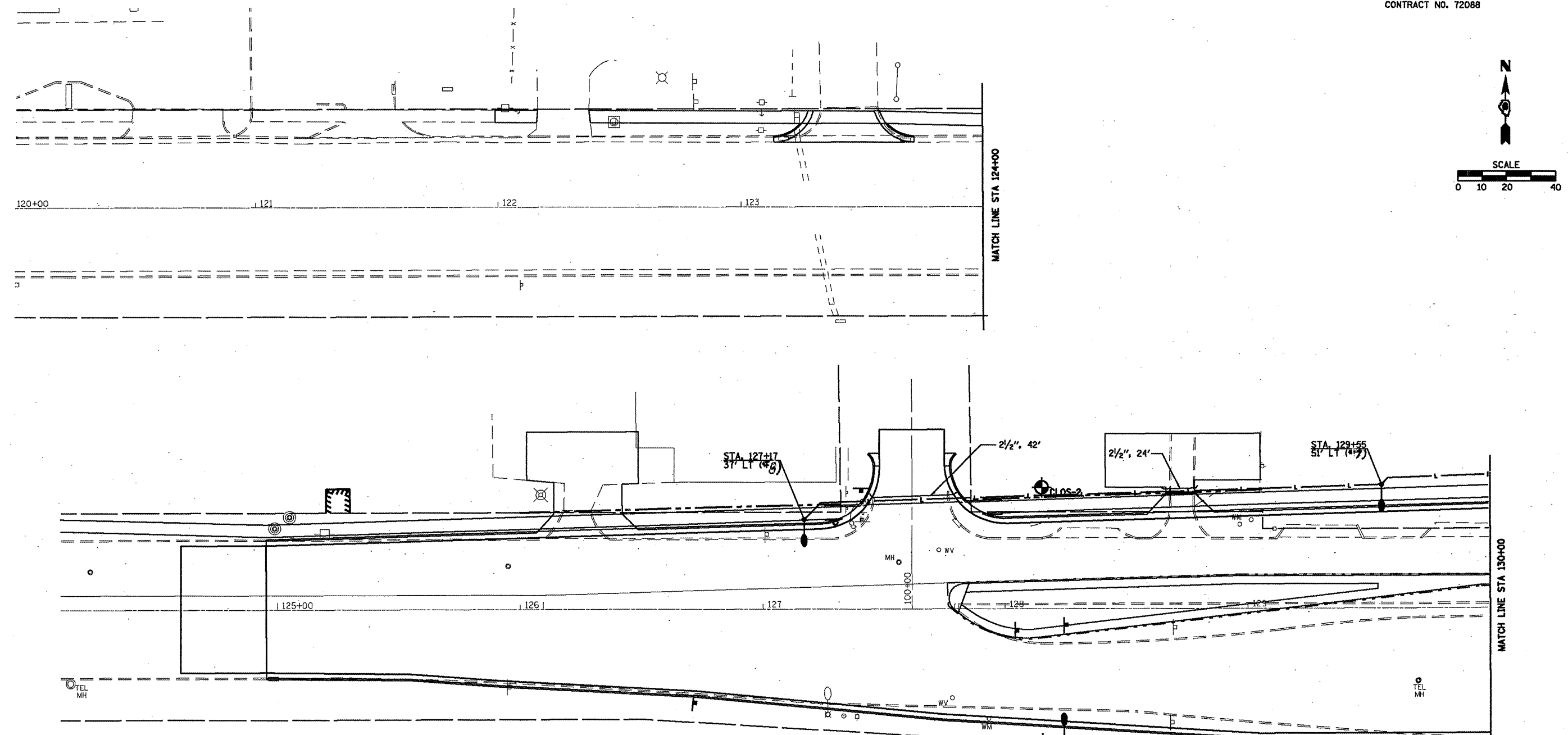


• F.A.P. 72, F.A.P. 6T, F.A.P. 75 & F.A.P. 668
 •• D-6 SPFLD-CLRLAKE DIRKSEN 2002

F.A.P. RTE.	SECTION	COUNTY	TOTAL SHEETS	SHEET NO.
•	••	SANGAMON	363	187
STA. 120+00.00 TO STA. 130+00.00				
FED. ROAD DIST. NO. ILLINOIS FED. AID PROJECT				
CONTRACT NO. 72088				



LEGEND

- LIGHT POLE, ALUMINUM, 50FT. M.H., 15FT. DAVIT ARM, WITH 400W LUMINAIRE ON BREAKAWAY COUPLINGS
- EXISTING LIGHT POLE TO BE REMOVED BY CWLP
- LIGHTING CONTROLLER, BASE MOUNTED, 240 VOLT, 100AMP
- UNIT DUCT ~~50' dia~~ AND PULLED, 600 VOLT, 2-1/2" NO. 8 AND 1/2" NO. 8 GROUND (XLP-TYPE USE) 3/4" DIA. POLYETHENE
- CONDUIT PUSHED, INTERMEDIATE METAL SIZE AS INDICATED
- EXISTING LIGHT POLE TO BE RELOCATED BY CWLP
- PROPOSED COMBINATION LIGHTING UNIT (SEE TRAFFIC SIGNAL PLANS)

REV.