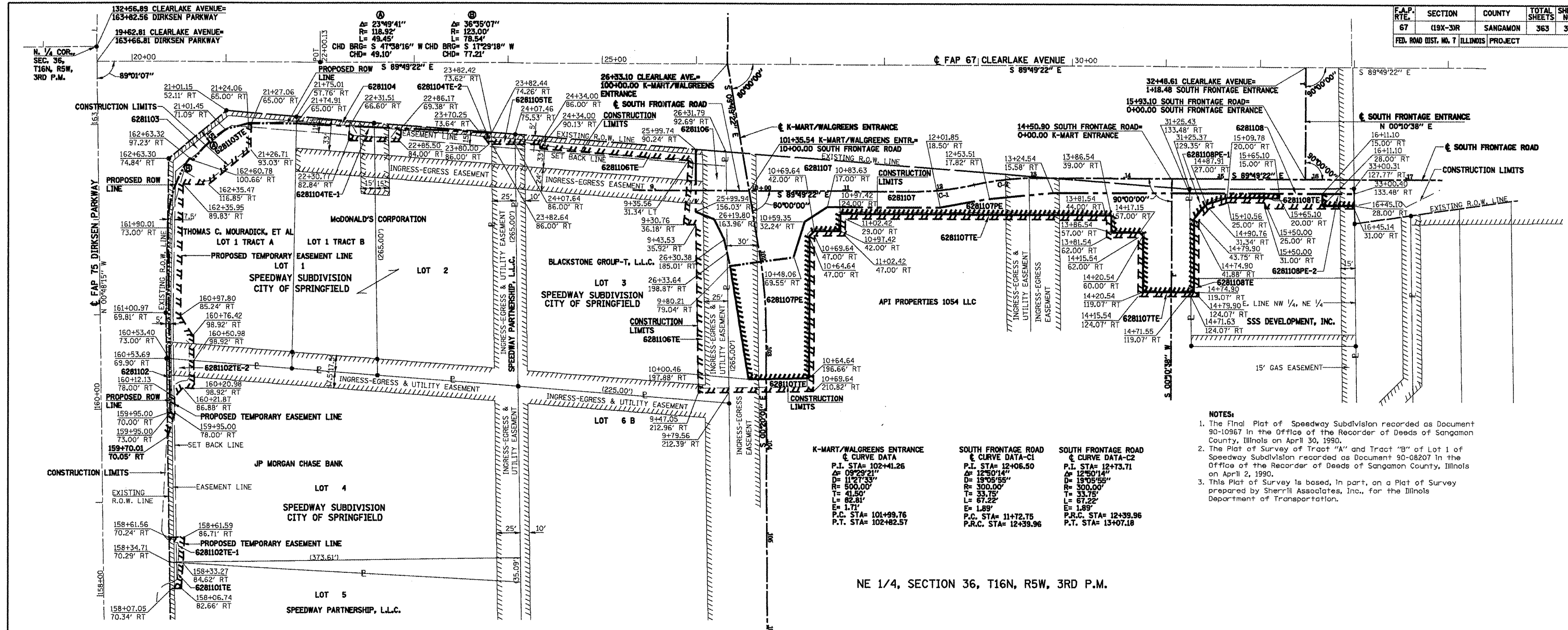


F.A.P. RTE.	SECTION	COUNTY	TOTAL SHEETS	SHEET NO.
67	(19X-3R)	SANGAMON	363	362
FED. ROAD DIST. NO. 7 ILLINOIS PROJECT				



- NOTES:**
- The Final Plat of Speedway Subdivision recorded as Document 90-10967 in the Office of the Recorder of Deeds of Sangamon County, Illinois on April 30, 1990.
 - The Plat of Survey of Tract "A" and Tract "B" of Lot 1 of Speedway Subdivision recorded as Document 90-08207 in the Office of the Recorder of Deeds of Sangamon County, Illinois on April 2, 1990.
 - This Plat of Survey is based, in part, on a Plat of Survey prepared by Sherrill Associates, Inc., for the Illinois Department of Transportation.

K-MART/WALGREENS ENTRANCE
 P.I. STA= 102+41.26
 Δ= 09°29'21"
 D= 11°27'33"
 R= 500.00'
 T= 41.50'
 L= 82.51'
 E= 1.71'
 P.C. STA= 101+99.76
 P.T. STA= 102+82.57

SOUTH FRONTAGE ROAD
 P.I. STA= 12+06.50
 Δ= 12°50'14"
 D= 19°05'55"
 R= 300.00'
 T= 33.75'
 L= 67.22'
 E= 1.89'
 P.C. STA= 11+72.75
 P.R.C. STA= 12+39.96

SOUTH FRONTAGE ROAD
 P.I. STA= 12+73.71
 Δ= 12°50'14"
 D= 19°05'55"
 R= 300.00'
 T= 33.75'
 L= 67.22'
 E= 1.89'
 P.R.C. STA= 12+39.96
 P.T. STA= 13+07.18

NE 1/4, SECTION 36, T16N, R5W, 3RD P.M.

PARCEL NO.	LOT NO.	OWNER	TOTAL AREA SQ. FT.	AREA TAKEN SQ. FT.	REMAINING AREA SQ. FT.	EASEMENT AREA SQ. FT.
NE 1/4, SECTION 36, T16N, R5W, 3rd P.M., SPEEDWAY SUBDIVISION TO CITY OF SPRINGFIELD						
6281101TE	LOT 5	SPEEDWAY PARTNERSHIP, L.L.C.	NA	NA	NA	362
6281102	LOT 4	JP MORGAN CHASE BANK	82,198	178	82,020	NA
6281102TE-1	LOTS 4 & 5	JP MORGAN CHASE BANK	NA	NA	NA	425
6281102TE-2	LOT 4	JP MORGAN CHASE BANK	NA	NA	NA	1069
6281103	PART OF LOT 1	THOMAS C. MOURADICK, ET AL.	33,977	2,584	31,393	NA
6281103TE	PART OF LOT 1	THOMAS C. MOURADICK, ET AL.	NA	NA	NA	5,563
6281104	PART OF LOTS 1 & 2	McDONALD'S CORPORATION	52,185	703	51,482	NA
6281104TE-1	PART OF LOTS 1 & 2	McDONALD'S CORPORATION	NA	NA	NA	846
6281104TE-2	PART OF LOTS 1 & 2	McDONALD'S CORPORATION	NA	NA	NA	88
6281105TE	PART OF LOT 2	SPEEDWAY PARTNERSHIP, L.L.C.	NA	NA	NA	286
6281106	PART OF LOT 3	BLACKSTONE GROUP-T, L.L.C.	59,329	2,472	56,857	NA
6281106TE	PART OF LOT 3	BLACKSTONE GROUP-T, L.L.C.	NA	NA	NA	8,856
6281107	NONE	API PROPERTIES 1054 LLC	520,106	20,539	499,567	NA
6281107PE	NONE	API PROPERTIES 1054 LLC	NA	NA	NA	21,224
6281107TE	NONE	API PROPERTIES 1054 LLC	NA	NA	NA	5,987
6281108	NONE	SSS DEVELOPMENT, INC.	43,516	861	42,655	NA
6281108PE-1	NONE	SSS DEVELOPMENT, INC.	NA	NA	NA	1,149
6281108PE-2	NONE	SSS DEVELOPMENT, INC.	NA	NA	NA	441
6281108TE	NONE	SSS DEVELOPMENT, INC.	NA	NA	NA	1,826

REASONS FOR TEMPORARY EASEMENTS
6281101TE ENTRANCE CONSTRUCTION
6281102TE-1 ENTRANCE CONSTRUCTION
6281102TE-2 ENTRANCE CONSTRUCTION
6281103TE ENTRANCE CONSTRUCTION
6281104TE-1 ENTRANCE CONSTRUCTION
6281104TE-2 ENTRANCE CONSTRUCTION
6281105TE ENTRANCE CONSTRUCTION
6281106TE SIDEWALK CONSTRUCTION & GRADING
6281107TE PARKING LOT & ENTRANCE RECONSTRUCTION
6281108TE PARKING LOT & ENTRANCE RECONSTRUCTION

RIGHT OF WAY PLANS

ROUTE FAP 67 (CLEARLAKE)
 SECTION (19X-3R)
 PROJECT
 COUNTY SANGAMON
 JOB NO. R-96-028-01
 STA TO STA
 SCALE: 1"=50'

SHEET NO. 3 OF 4

Bearings are referenced to the Illinois State Plane Coordinate System, NAD 83 1988, West Zone.