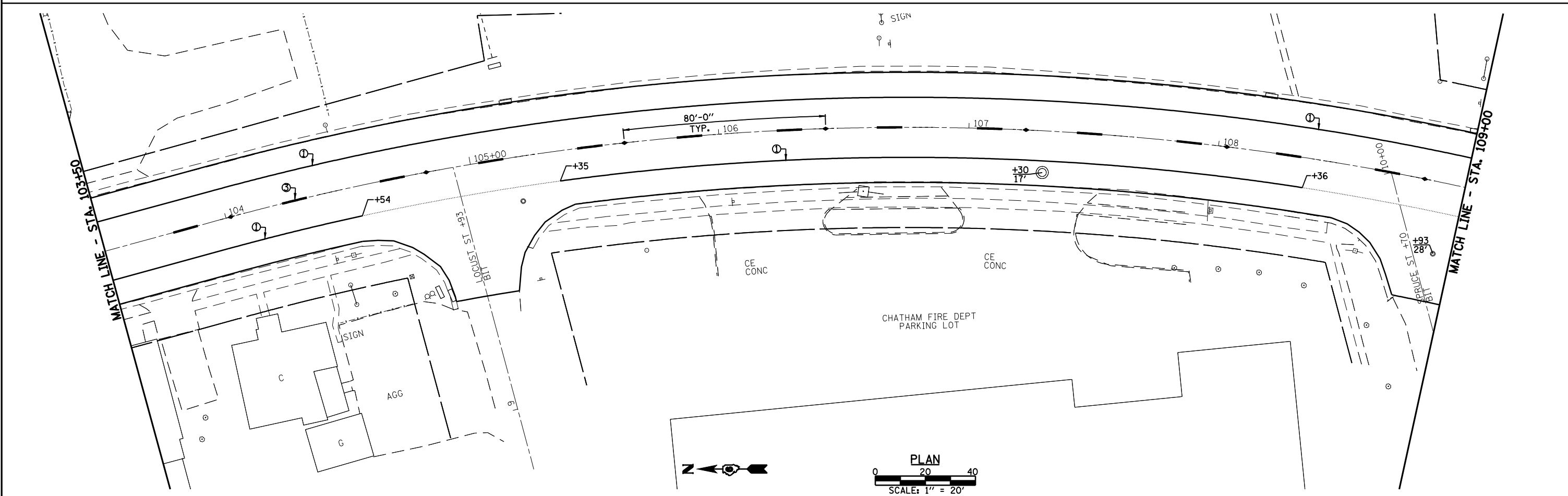
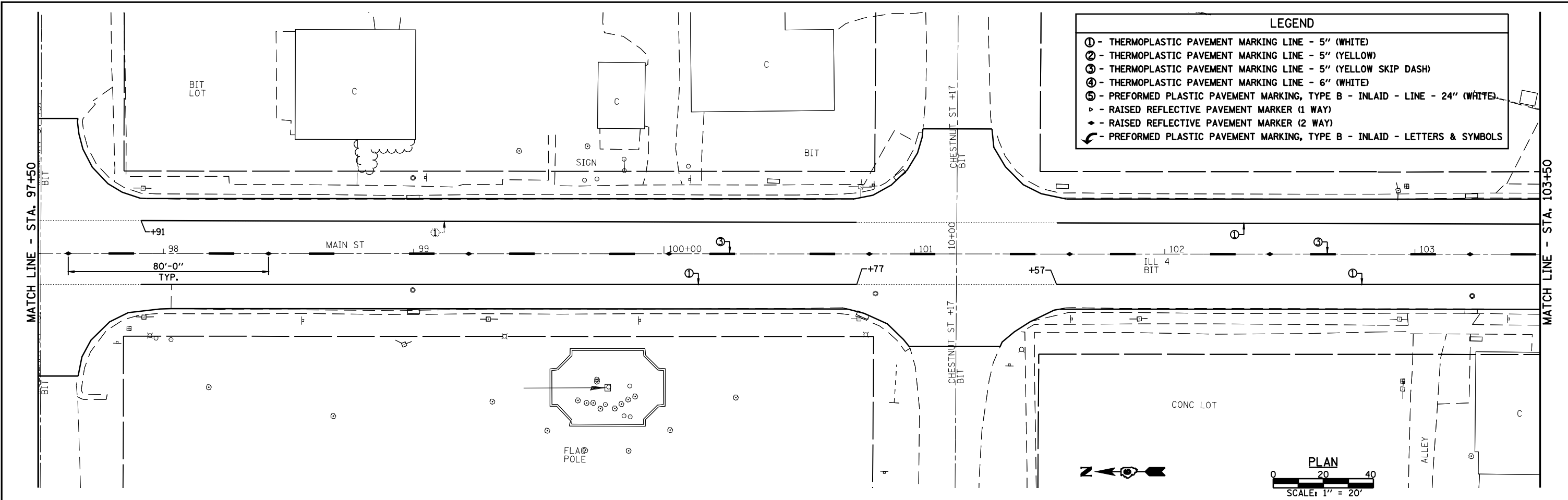


LEGEND	
①	- THERMOPLASTIC PAVEMENT MARKING LINE - 5" (WHITE)
②	- THERMOPLASTIC PAVEMENT MARKING LINE - 5" (YELLOW)
③	- THERMOPLASTIC PAVEMENT MARKING LINE - 5" (YELLOW SKIP DASH)
④	- THERMOPLASTIC PAVEMENT MARKING LINE - 6" (WHITE)
⑤	- PREFORMED PLASTIC PAVEMENT MARKING, TYPE B - INLAID - LINE - 24" (WHITE)
▲	- RAISED REFLECTIVE PAVEMENT MARKER (1 WAY)
◆	- RAISED REFLECTIVE PAVEMENT MARKER (2 WAY)
↩	- PREFORMED PLASTIC PAVEMENT MARKING, TYPE B - INLAID - LETTERS & SYMBOLS



USER NAME = laughlinr1	DESIGNED -	REVISED -
PLOT SCALE = 40.0000' / IN.	DRAWN -	REVISED -
PLOT DATE = Jun-28-2010 10:59:04AM	CHECKED -	REVISED -
	DATE -	REVISED -



Allen Henderson & Associates, Inc.
 Civil and Structural Engineers Springfield, IL
 62708 Phone: (217)544-8033 IL Design Firm
 No. 184-001907

ROADWAY & PAVEMENT MARKING PLAN
 SCALE: 1" = 20' SHEET NO. 3 OF 5 SHEETS STA. 97+50 TO STA. 109+00

F.A.P. RTE.	SECTION	COUNTY	TOTAL SHEETS	SHEET NO.
662	HRS-10,B-2)	SANGAMON	84	26
CONTRACT NO. 72A73				
FED. ROAD DIST. NO. ILLINOIS FED. AID PROJECT				