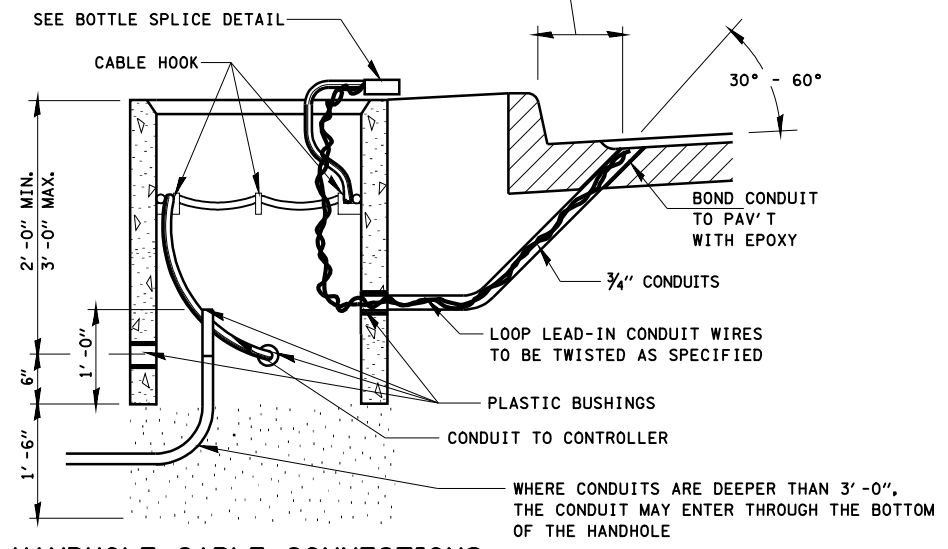
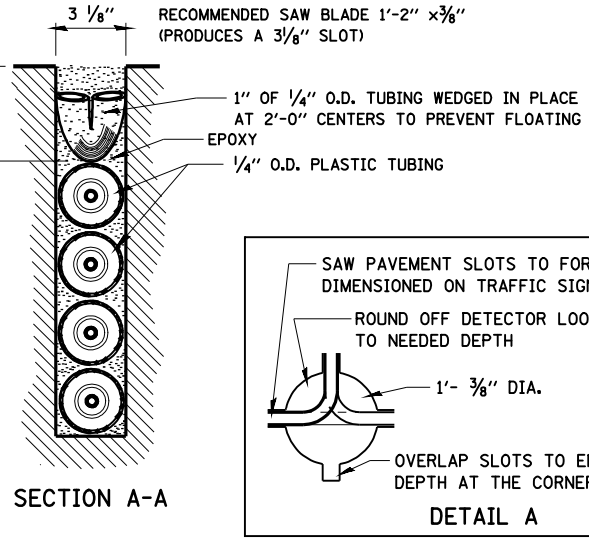
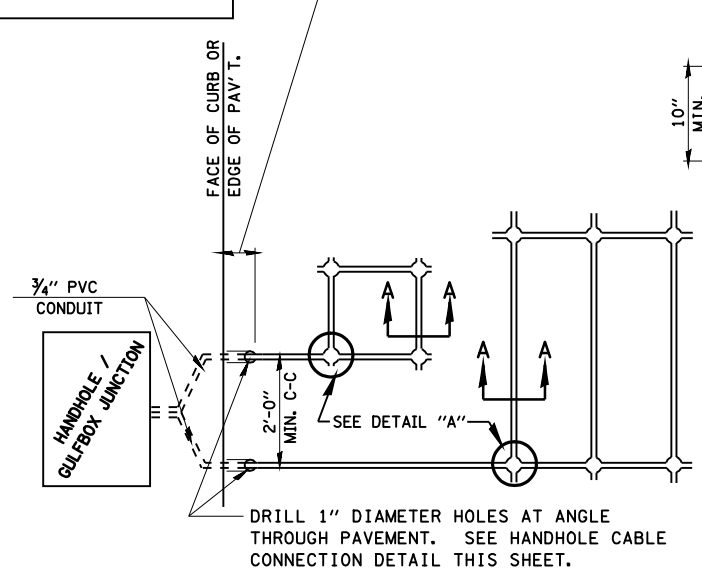


LENGTH OF SLACK FOR LOOP LEAD-INS SHALL PROVIDE FOR MAKING THE SPLICE ON TOP OF THE HANDHOLE AND ONE COMPLETE LOOP OF THE INTERIOR OF THE HANDHOLE, THE SPLICE SHALL BE SUPPORTED BY A CABLE HOOK.

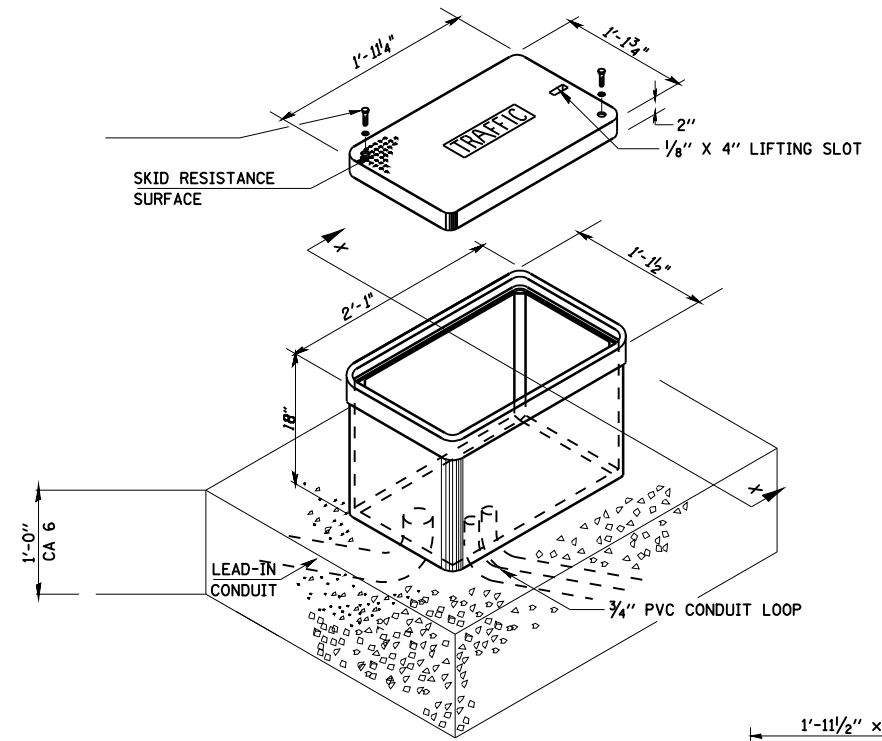
THE LOOP LEAD-IN CONDUIT HOLES SHALL BE PLACED AS CLOSE TO THE CURB AS POSSIBLE TO PERMIT SAW OVERLAP WITHOUT SCARRING FACE OF CURB. IN NON-CURB LOCATIONS THE DISTANCE SHALL NOT BE LESS THAN 6".



**HANDHOLE CABLE CONNECTIONS**

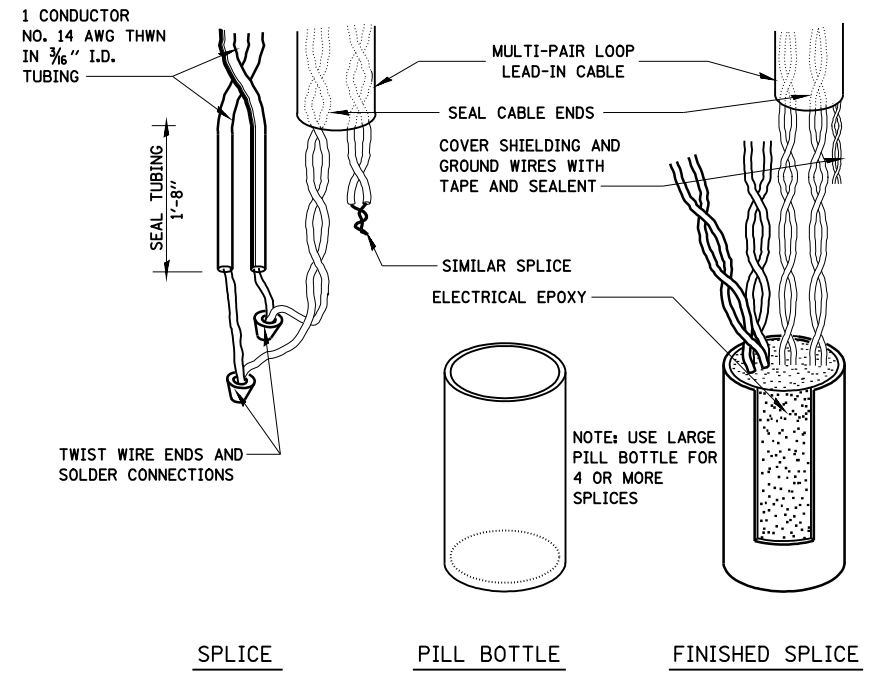
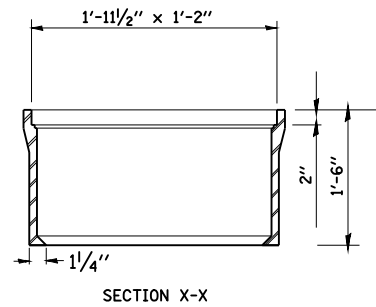


**PAVEMENT SAWING DETAIL FOR TUBE ENCASED DETECTOR LOOP WIRE**



MINIMUM DIMENSIONS

**GULFBOX JUNCTION**



**BOTTLE SPLICE DETAIL**

FILE NAME =	USER NAME = laughlinr1	DESIGNED -	REVISED -
et:\pw\work\PWIDOT\LAUGHLINRL\0213035\0672673_sht.ts.07.dgn		DRAWN -	REVISED -
	PLOT SCALE = 40.0001' / IN.	CHECKED -	REVISED -
	PLOT DATE = Jun-28-2010 11:00:37AM	DATE -	REVISED -

**STATE OF ILLINOIS  
DEPARTMENT OF TRANSPORTATION**

**TRAFFIC SIGNAL DETECTOR  
LOOP DETAILS**

SCALE: 1" = 20' SHEET NO. 7 OF 10 SHEETS STA. TO STA.

F.A.P. RTE.	SECTION	COUNTY	TOTAL SHEETS	SHEET NO.
662	HRS-10,B-2)	SANGAMON	84	41
CONTRACT NO. 72A73				
ILLINOIS FED. AID PROJECT				