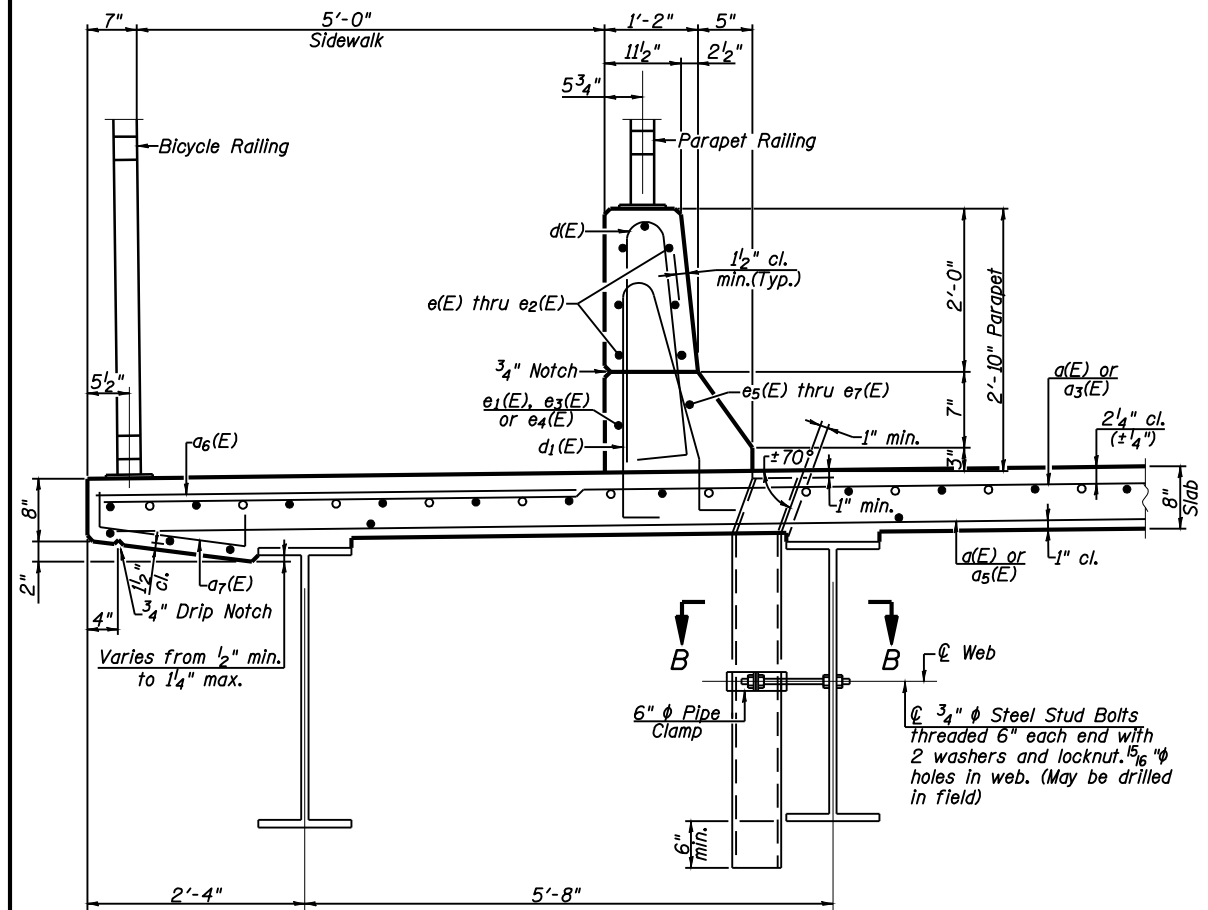
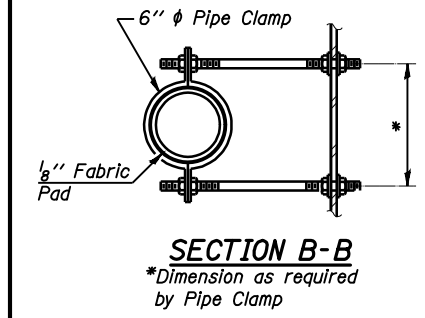


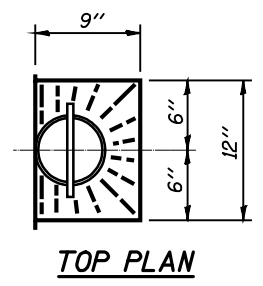
**INSIDE ELEVATION OF EAST PARAPET**  
(West Parapet Similar)



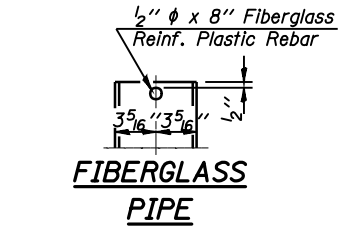
**SECTION THRU PARAPET**



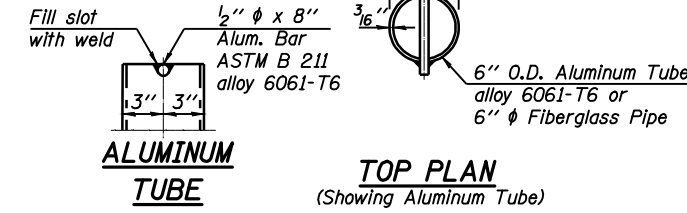
**SECTION B-B**  
\*Dimension as required by Pipe Clamp



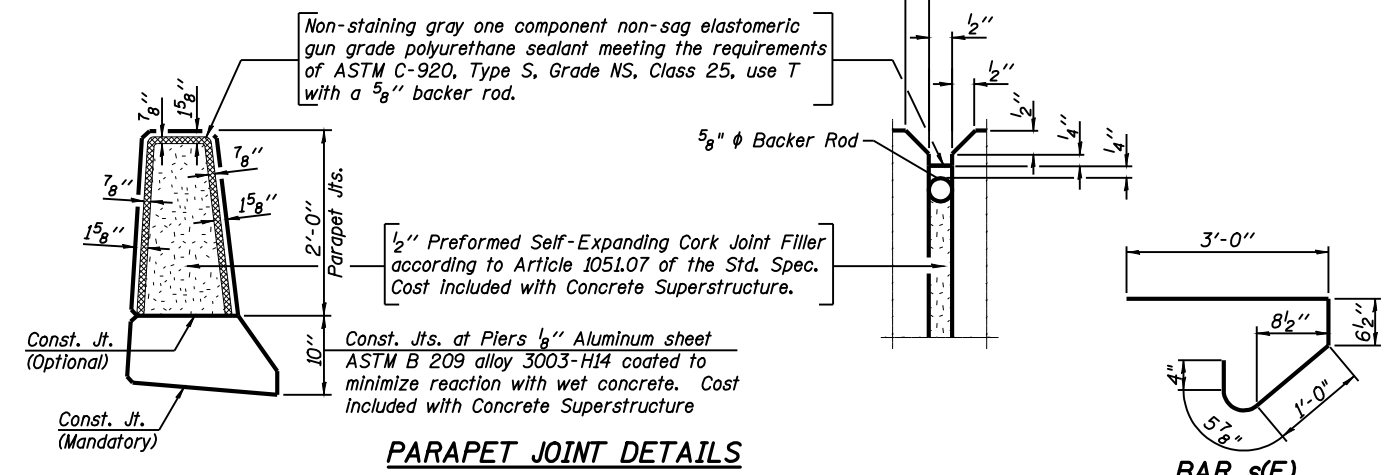
**TOP PLAN**



**FIBERGLASS PIPE**

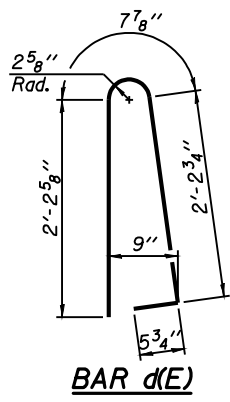


**ALUMINUM TUBE**  
TOP PLAN (Showing Aluminum Tube)

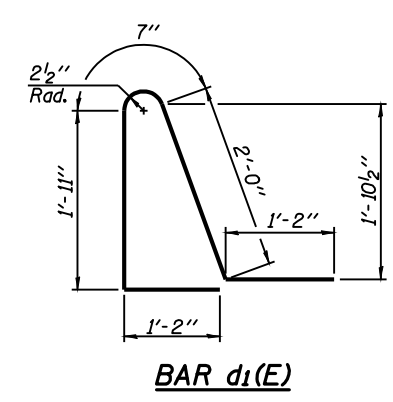


**PARAPET JOINT DETAILS**

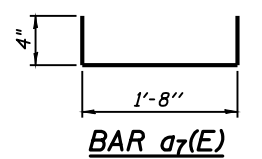
**Notes:**  
The exterior surfaces of the floor drains shall be painted with the finish coat as specified in the special provisions for Cleaning and Painting New Metal Structures. The exterior surfaces of the drains shall be cleaned according to Society of Protective Coatings Spec. SSPC-SP1 prior to painting.  
Fiberglass pipe shall conform to ASTM D 2996, with short-time rupture strength hoop tensile stress of 30,000 p.s.i. minimum.  
Galvanize clamping device according to AASHTO M232. Cost of clamping device and inserts is included with Floor Drains.



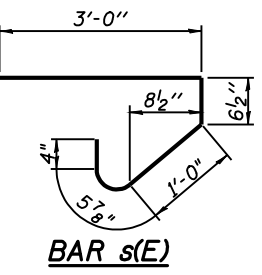
**BAR d1(E)**



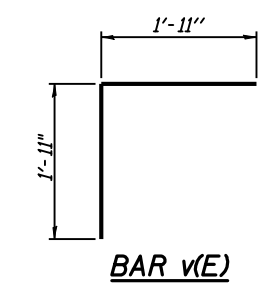
**BAR d1(E)**



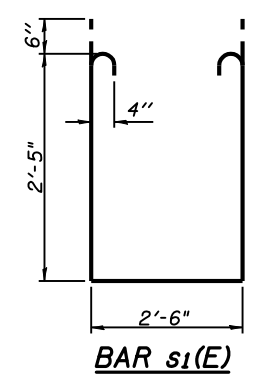
**BAR a7(E)**



**BAR s(E)**



**BAR v(E)**



**BAR s1(E)**

**SUPERSTRUCTURE BILL OF MATERIAL**

Bar	No.	Size	Length	Shape	
a(E)	383	#5	32'-10"	—	
a1(E)	8	#5	20'-3"	—	
a2(E)	225	#5	18'-10"	—	
a3(E)	225	#5	29'-4"	—	
a4(E)	165	#5	27'-4"	—	
a5(E)	158	#5	20'-10"	—	
a6(E)	446	#6	6'-6"	—	
a7(E)	260	#5	2'-4"	┘	
b(E)	316	#5	35'-6"	—	
b1(E)	156	#6	32'-0"	—	
b2(E)	355	#5	28'-10"	—	
d(E)	286	#5	5'-7"	┘	
d1(E)	286	#5	6'-10"	┘	
e(E)	56	#4	16'-5"	—	
e1(E)	64	#4	6'-2"	—	
e2(E)	28	#4	19'-2"	—	
e3(E)	4	#4	33'-2"	—	
e4(E)	2	#4	38'-9"	—	
e5(E)	4	#8	33'-2"	—	
e6(E)	8	#8	6'-2"	—	
e7(E)	2	#8	38'-9"	—	
m(E)	20	#6	20'-8"	—	
m1(E)	56	#6	9'-11"	—	
m2(E)	30	#6	6'-2"	—	
m3(E)	20	#6	27'-7"	—	
s(E)	168	#5	5'-5"	┘	
s1(E)	144	#4	8'-4"	┘	
v(E)	158	#5	3'-10"	┘	
Reinforcement Bars, Epoxy Coated				Pound	78310
Concrete Superstructure				Cu. Yds.	337.5

**SUPERSTRUCTURE DETAILS**  
S.N. 084-0521

**Allen Henderson & Associates, Inc.**  
Civil and Structural Engineers Springfield, IL.  
62703 Phone: (217)544-8033 IL. Design Firm  
No. 184-001907

SHEET NO. 12  
30 SHEETS

F.A.P. RTE.	SECTION	COUNTY	TOTAL SHEETS	SHEET NO.
662	H(RS-10,B-2)	SANGAMON	84	56
CONTRACT NO. 72A73				
FED. ROAD DIST. NO.		ILLINOIS FED. AID PROJECT		