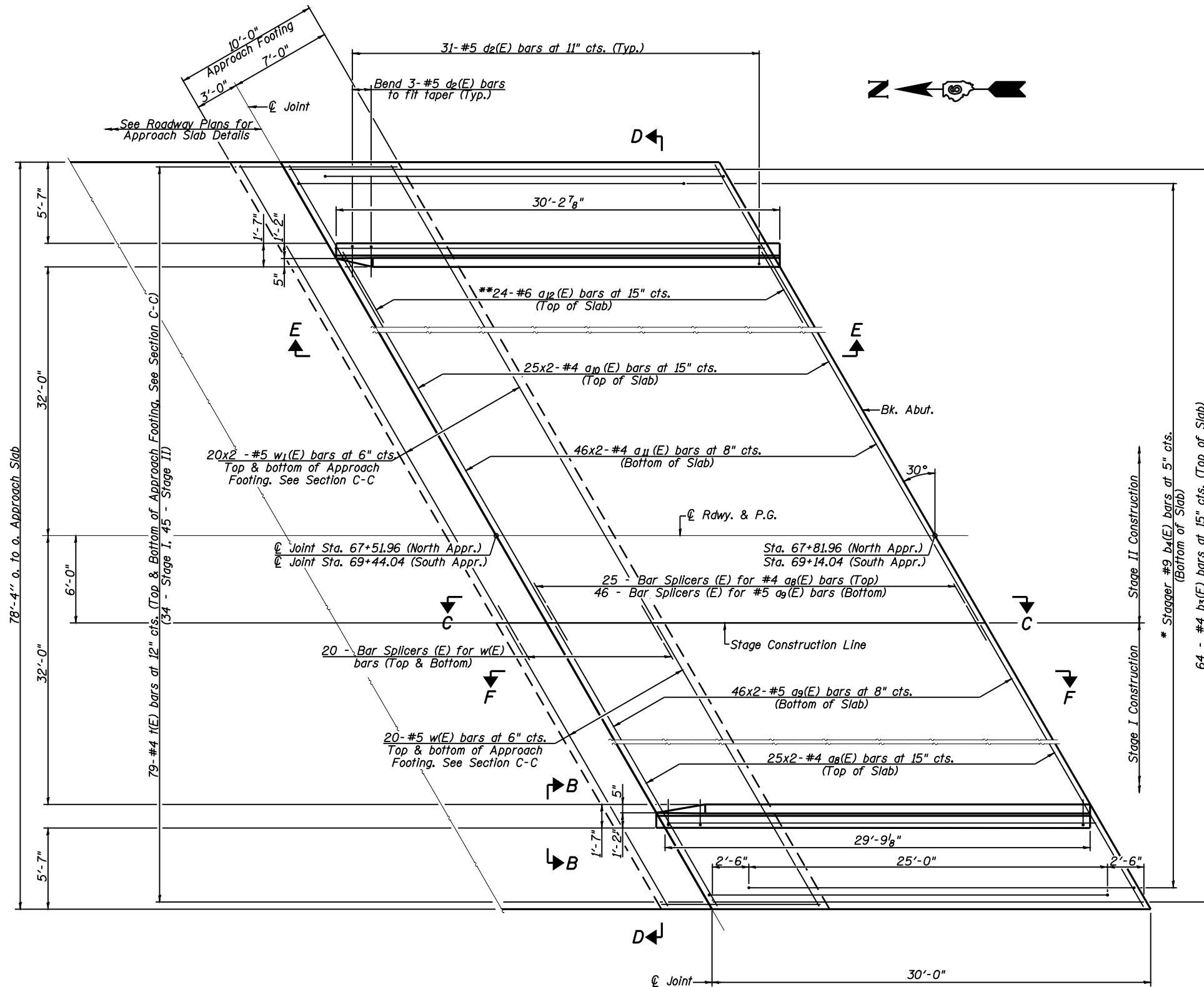
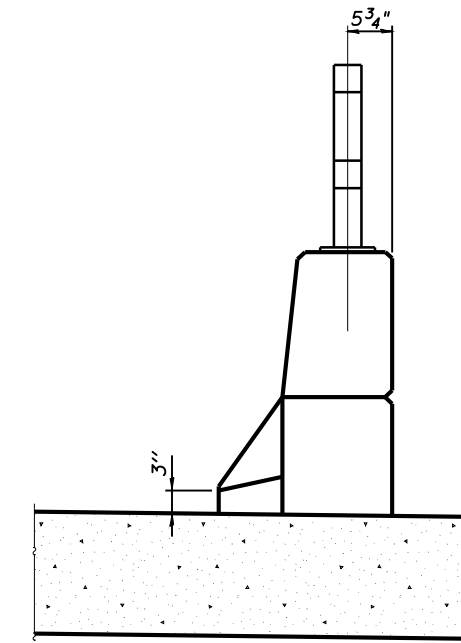


Notes:  
See sheet 15 of 30 for Sections C-C & D-D and View E-E.  
 $a_8(E)$ ,  $a_9(E)$ ,  $a_{10}(E)$  and  $a_{11}(E)$  bar spacings measured along  $\text{C}$  Rdwy.



**PLAN - NORTH APPROACH**  
(South Approach Similar)

\* Tilt #9  $b_4(E)$  bars as required to maintain clearance.  
\*\* Space between  $a_{10}(E)$  bars, typ. each parapet.  
Bars indicated thus 25x2-#4 etc. Indicates 25 lines of bars with 2 lengths per line.



**VIEW B-B**

**MINIMUM BAR LAP**  
#4 = 2'-0"  
#5 = 2'-6"

(Sheet 1 of 2)  
**BRIDGE APPROACH SLAB DETAILS**  
S.N. 084-0521



**Allen Henderson & Associates, Inc.**  
Civil and Structural Engineers Springfield, IL  
62703 Phone: (217)544-8033 IL Design Firm  
No. 184-001907

SHEET NO. 14  
30 SHEETS

F.A.P. RTE.	SECTION	COUNTY	TOTAL SHEETS	SHEET NO.
662	H(RS-10,B-2)	SANGAMON	84	58
<b>CONTRACT NO. 72A73</b>				
FED. ROAD DIST. NO.		ILLINOIS FED. AID PROJECT		