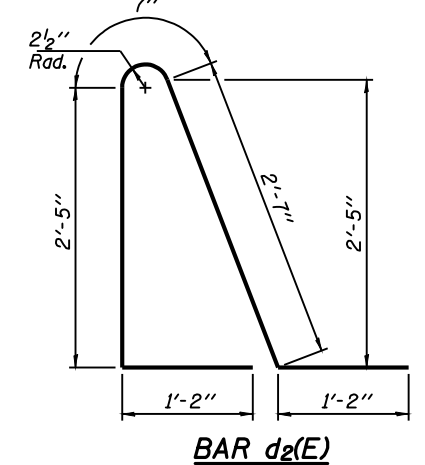
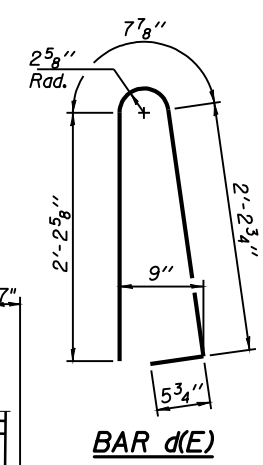
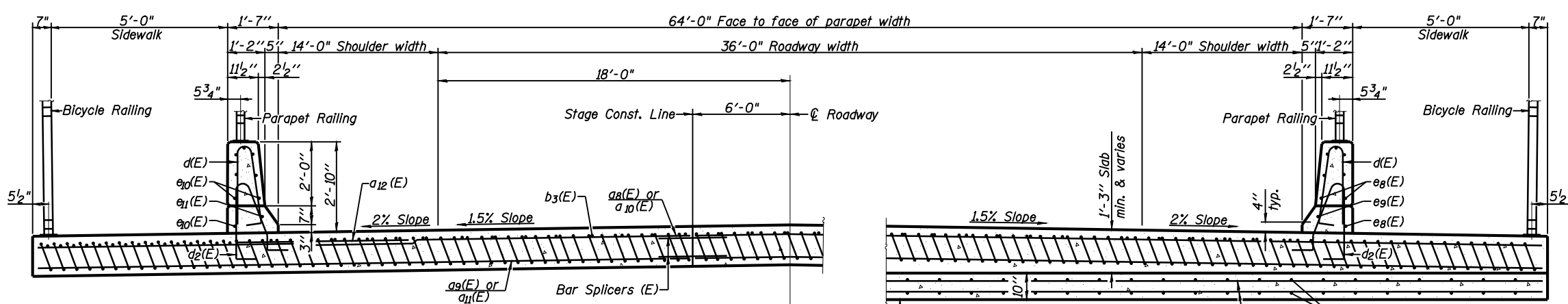
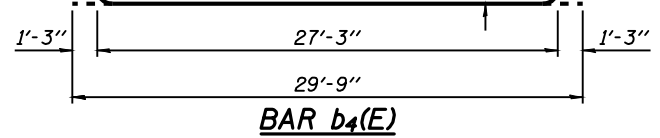


**Notes:**  
 See sheet 14 of 30 for Detail A and View B-B.  
 Approach slab and parapet concrete shall be paid for as Concrete Superstructure.  
 Approach footing concrete shall be paid for as Concrete Structures.  
 Reinforcement shall be paid for as Reinforcement Bars, Epoxy Coated.  
 For v(E) bar details, see sheet 12 of 30.  
 The approach footing maximum applied service bearing pressure ( $Q_{max}$ ) = 2.0 ksf.  
 For bar splicer details, see sheet 26 of 30.  
 Cost of excavation for approach footing included with Concrete Structures.  
 For Porous Granular Embankment (Special) and drainage treatment details, see sheet 2 of 30.  
 See sheet 17 of 30 for rail post spacing.



**TWO APPROACHES  
 BILL OF MATERIAL**

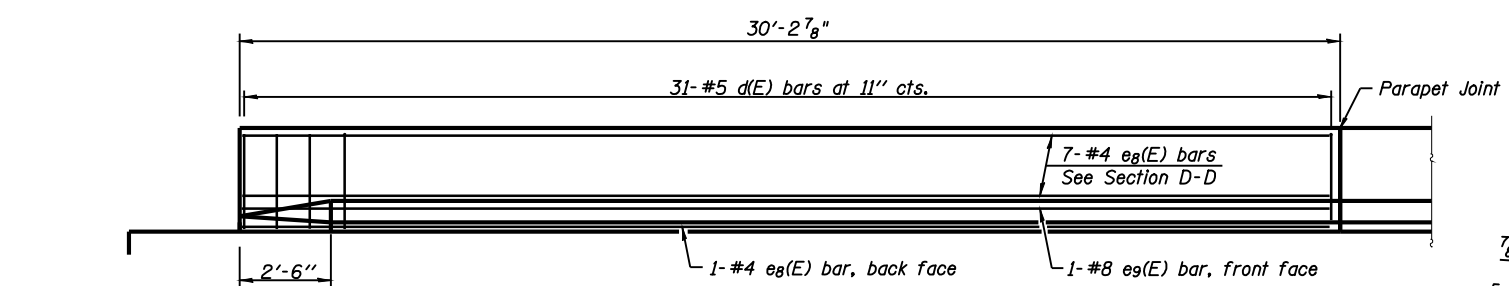
Bar	No.	Size	Length	Shape	
a8(E)	100	#4	20'-0"	—	
a9(E)	184	#5	20'-3"	—	
a10(E)	100	#4	27'-0"	—	
a11(E)	184	#5	27'-3"	—	
a12(E)	96	#6	6'-6"	—	
b3(E)	128	#4	29'-8"	—	
b4(E)	376	#9	29'-9"	—	
d(E)	124	#5	5'-7"	⤴	
d2(E)	124	#5	7'-11"	⤴	
e8(E)	16	#4	29'-11"	—	
e9(E)	2	#8	29'-11"	—	
e10(E)	16	#4	29'-5"	—	
e11(E)	2	#8	29'-5"	—	
f(E)	316	#4	11'-2"	—	
w(E)	80	#5	37'-9"	—	
w1(E)	160	#5	27'-2"	—	
Concrete Superstructure				Cu. Yd.	251.7
Concrete Structures				Cu. Yd.	55.9
Reinforcement Bars, Epoxy Coated				Pound	66,500

**NEAR ABUTMENT**

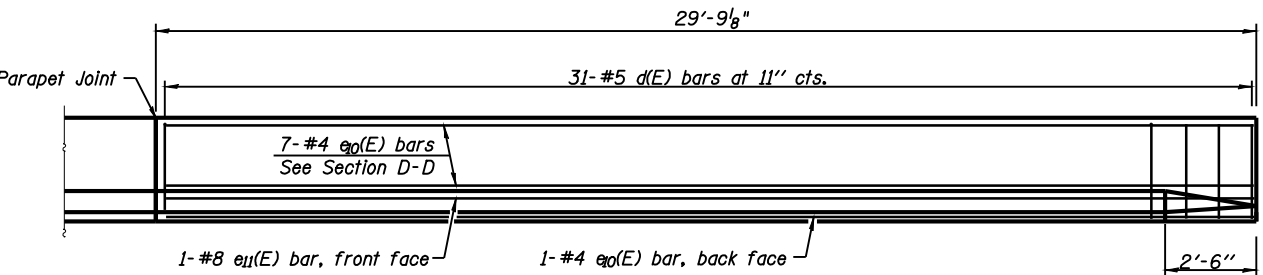
**SECTION D-D**  
 (See Plan for dimensions not shown)

**AT APPROACH FOOTING**

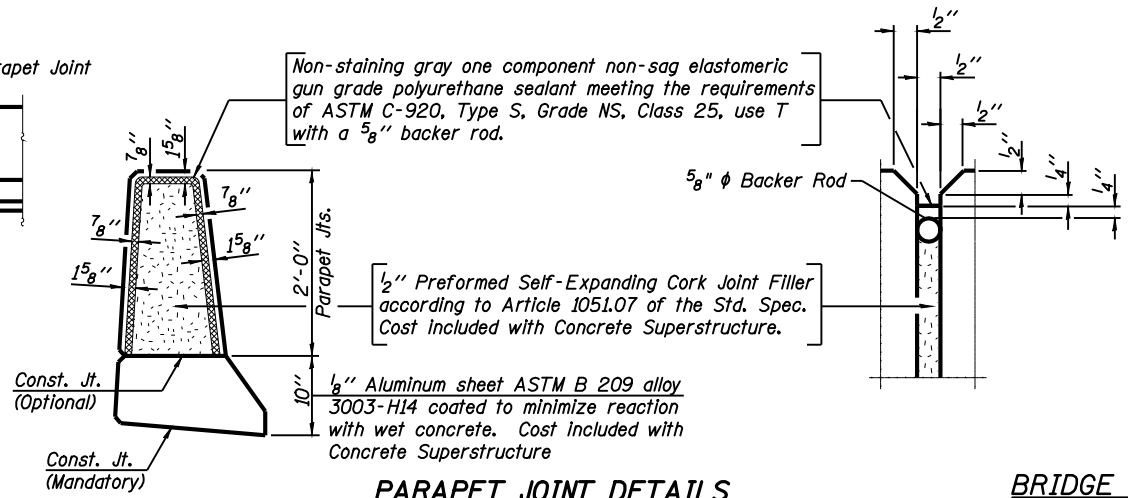
\* Tilt #9 b4(E) bars as required to maintain clearance.



**VIEW E-E**  
 (West Parapet - South Approach Similar)



**VIEW F-F**  
 (East Parapet - South Approach Similar)



**PARAPET JOINT DETAILS**

**BRIDGE APPROACH SLAB DETAILS  
 S.N. 084-0521**

**Allen Henderson & Associates, Inc.**  
 Civil and Structural Engineers Springfield, IL  
 62703 Phone: (217)544-8033 IL Design Firm  
 No. 184-001907

SHEET NO. 15  
 30 SHEETS

F.A.P. RTE.	SECTION	COUNTY	TOTAL SHEETS	SHEET NO.
662	HRS-10,B-2)	SANGAMON	84	59
<b>CONTRACT NO. 72A73</b>				
FED. ROAD DIST. NO.		ILLINOIS FED. AID PROJECT		