

FRAMING PLAN

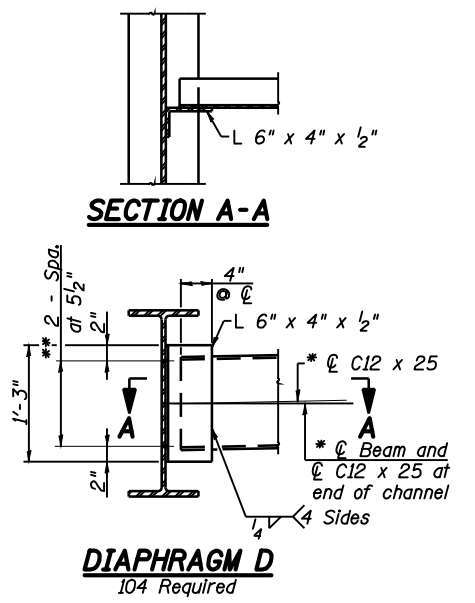
All beams are W24x76, AASHTO M 270, Grade 50, NTR.

Notes: Load carrying components designated "NTR" shall conform to the Supplemental Requirements for Notch Toughness, Zone 2. For remainder of structural steel details see sheet 19 of 30.

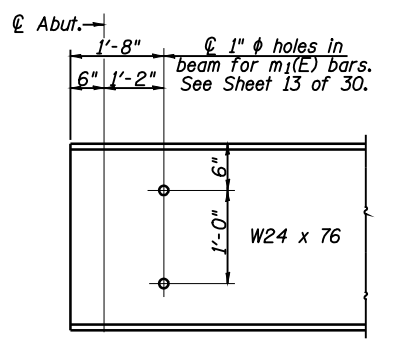
****** TOP OF BEAM ELEVATIONS**

LOCATION	℄ N. Abut.	℄ Pier 1	℄ Splice 1	℄ Splice 2	℄ Pier 2	℄ S. Abut.
Beam 1	580.20	580.10	580.07	579.98	579.96	579.88
Beam 2	580.31	580.20	580.18	580.09	580.07	579.98
Beam 3	580.42	580.31	580.29	580.19	580.17	580.08
Beam 4	580.53	580.41	580.39	580.29	580.27	580.18
Beam 5	580.62	580.50	580.48	580.37	580.36	580.26
Beam 6	580.70	580.58	580.56	580.44	580.42	580.34
Beam 7	580.78	580.66	580.63	580.51	580.49	580.41
Beam 8	580.78	580.65	580.62	580.50	580.48	580.40
Beam 9	580.69	580.56	580.53	580.40	580.39	580.30
Beam 10	580.60	580.46	580.44	580.31	580.29	580.21
Beam 11	580.50	580.36	580.33	580.20	580.18	580.10
Beam 12	580.38	580.24	580.21	580.08	580.06	579.98
Beam 13	580.26	580.12	580.09	579.95	579.93	579.85
Beam 14	580.14	579.99	579.96	579.83	579.81	579.73

**** For fabrication only

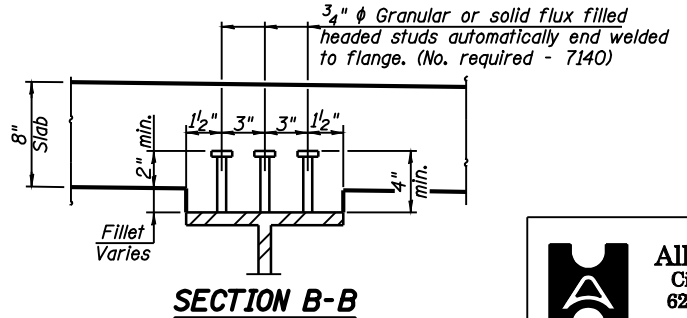


Notes:
 Two hardened washers required for each set of oversized holes.
 * Alternate C12 x 30 channels are permitted to facilitate material acquisition. Calculated weight of structural steel is based on the lighter section. The alternate if utilized, shall be provided at no additional cost to the Department.
 ** 3/4" φ HS Bolts, 15/16" φ Holes.
 All diaphragms shall be installed as steel is erected and secured with erection pins and bolts except as otherwise noted. Individual diaphragms at supports may be temporarily disconnected to install bearing anchor rods.
 *** Use 13/16" x 17/8" vertical slotted holes in connection angles 6" x 4" x 1/2" at the West side of Beam 8 only. Provide 5/16" plate washers for slotted holes. The bolts for slotted holes in angles at Beam 8 shall only be finger tightened prior to deck pour for Stage II Construction. The bolts shall be fully tightened after completion of the deck pour for Stage II Construction.



TYP. END OF BEAM ELEVATION

STRUCTURAL STEEL
 S.N. 084-0521



SECTION B-B

Allen Henderson & Associates, Inc.
 Civil and Structural Engineers Springfield, IL
 62703 Phone: (217)544-8033 IL Design Firm
 No. 184-001907

SHEET NO. 18
 30 SHEETS

F.A.P. RTE.	SECTION	COUNTY	TOTAL SHEETS	SHEET NO.
662	H(RS-10,B-2)	SANGAMON	84	62
CONTRACT NO. 72A73				
FED. ROAD DIST. NO.		ILLINOIS FED. AID PROJECT		