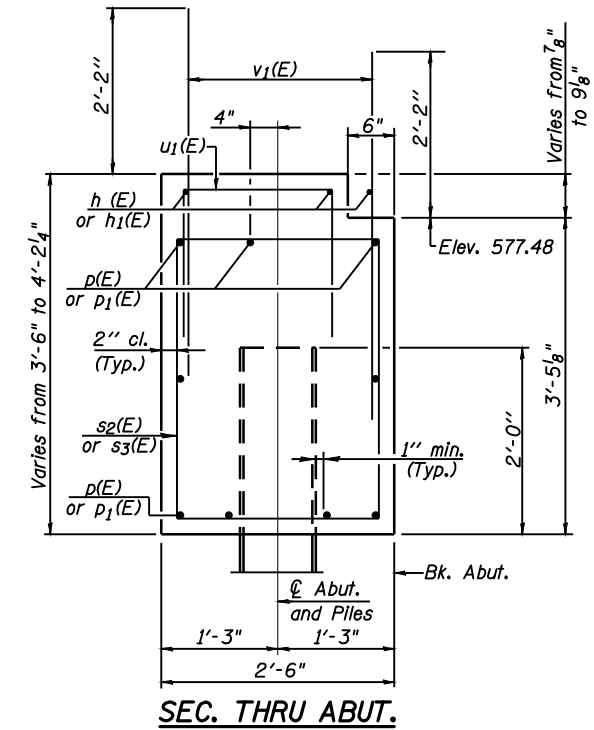
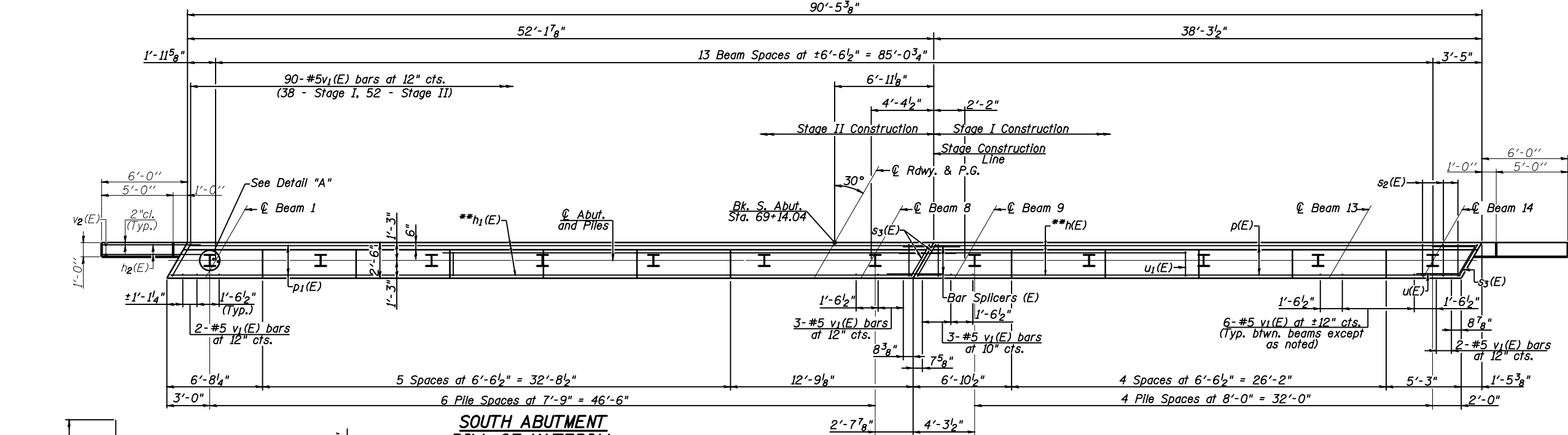
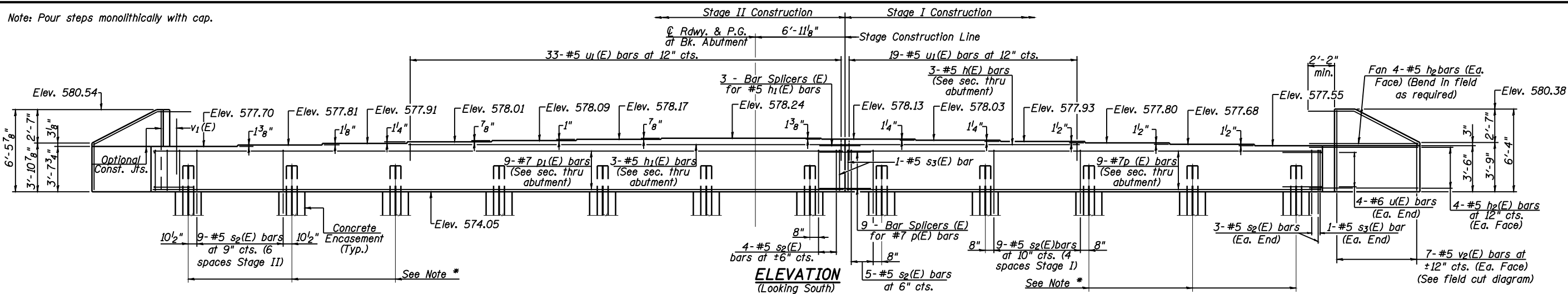


Note: Four steps monolithically with cap.

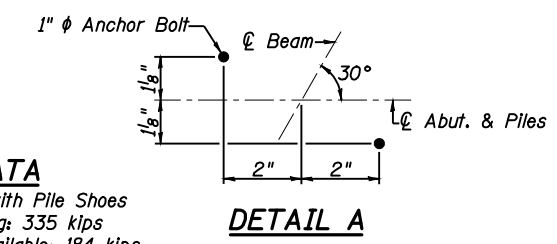


**SOUTH ABUTMENT  
BILL OF MATERIAL**

Bar	No.	Size	Length	Shape
h(E)	3	#5	19'-7"	—
h1(E)	3	#5	33'-6"	—
h2(E)	32	#5	9'-0"	—
p(E)	9	#7	37'-11"	—
p1(E)	9	#7	51'-9"	—
s2(E)	105	#5	11'-3"	□
s3(E)	4	#5	11'-11"	□
u(E)	8	#6	8'-3"	⌋
u1(E)	52	#5	6'-2"	⌋
v1(E)	172	#5	5'-0"	—
v2(E)	14	#5	9'-6"	—
Structure Excavation		Cu. Yd.	69	
Concrete Structures		Cu. Yd.	34.2	
Reinforcement Bars, Epoxy Coated		Pound	4870	
Furnishing Steel Piles HP 10x42		Foot	275	
Driving Piles		Foot	275	
Test Pile, Steel HP 10x42		Each	1	
Pile Shoes		Each	12	
Concrete Encasement		Cu. Yd.	4.2	

For details of Bar Splicers, see sheet 26 of 30.  
For details of piles and Concrete Encasement, see sheet 25 of 30.

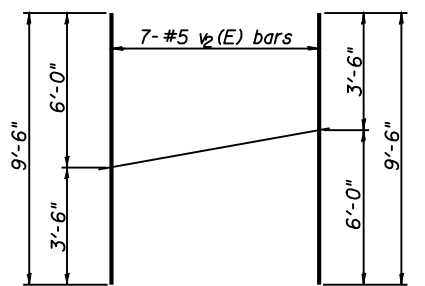
**PLAN**



**PILE DATA**

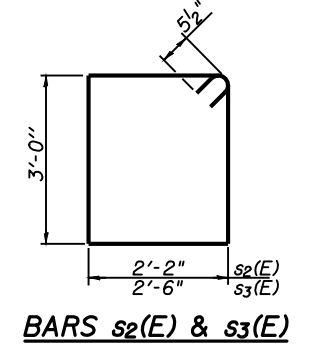
Type: Steel HP 10x42 with Pile Shoes  
Nominal Required Bearing: 335 kips  
Factored Resistance Available: 184 kips  
Est. Length: 25 ft.  
No. Production Piles: 11  
No. Test Piles: 1

\* The three end piles on each side of the abutment shall be driven through 2' diameter precored holes extending to elevation 566.0 according to Article 512.09(c) of the Standard Specifications. Cost included with driving piles.  
\*\* Cut bars to fit

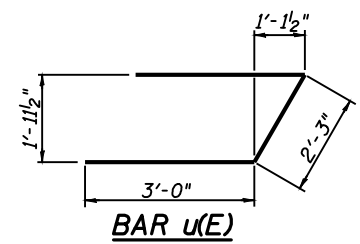


**FIELD CUTTING DIAGRAM**

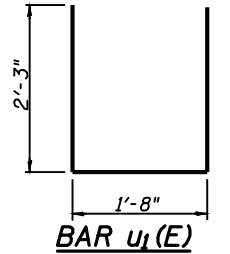
Order v2(E) full length. Cut as shown and use remainder of bars in opposite face.



**BARS s2(E) & s3(E)**



**BAR u(E)**



**BAR u1(E)**

**SOUTH ABUTMENT  
S.N. 084-0521**



**Allen Henderson & Associates, Inc.**  
Civil and Structural Engineers Springfield, IL.  
62703 Phone: (217)544-8033 IL. Design Firm  
No. 184-001907

SHEET NO. 22  
30 SHEETS

F.A.P. RTE.	SECTION	COUNTY	TOTAL SHEETS	SHEET NO.
662	HRS-10,B-2)	SANGAMON	84	66
CONTRACT NO. 72A73				
FED. ROAD DIST. NO.		ILLINOIS FED. AID PROJECT		