

F.A.P. RTE.	SECTION	COUNTY	TOTAL SHEETS	SHEET NO.
662	HRS-10,B-2)	SANGAMON	84	1
FED. ROAD DIST. NO.	ILLINOIS	CONTRACT NO. 72A73		

\* 84 + 2 = 86

**INDEX OF SHEETS**

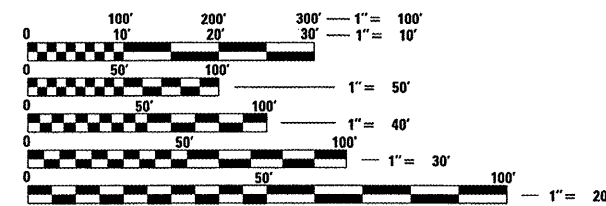
1	TITLE SHEET
2	GENERAL NOTES & MIXTURE REQUIREMENTS
3 - 7	SUMMARY OF QUANTITIES
8 - 11	TYPICAL ROADWAY SECTIONS
12 - 14	DETAILS
15 - 17	SCHEDULE OF QUANTITIES
18 - 20	ALIGNMENT, TIES & BENCHMARKS
21 - 23	PLAN AND PROFILE
24 - 28	ROADWAY PLAN
29 - 31	STAGE CONSTRUCTION TRAFFIC DETAILS
32	EROSION CONTROL PLAN
33	PAVEMENT MARKING DETAILS
34	GRADING PLAN
* 35 - 44	TRAFFIC SIGNAL DETAILS
45 - 74	STRUCTURE PLANS
75 - 84	CROSS SECTIONS
	STANDARDS

\* 44A, 44B Added

**LIST OF ILLINOIS DOT HIGHWAY STANDARDS**

000001-05	606001-04
001001-02	606201-02
001006	630001-08
280001-05	631031-08
420401-08	635006-03
424001-05	666001-01
442201-03	701001-02
515001-03	701006-03
542106-02	701011-02
542301-02	701502-03
542601-02	701801-04
601001-03	701701-06
602301-02	701901-01
602306-02	704001-02
602416-01	780001-02
602701-02	781001-03
604001-03	814001-02
604006-04	BLR 21-8
604046-02	

701501-05 701801-04



FULL SIZE PLANS HAVE BEEN PREPARED USING STANDARD ENGINEERING SCALES. REDUCED SIZED PLANS WILL NOT CONFORM TO STANDARD SCALES. IN MAKING MEASUREMENTS ON REDUCED PLANS, THE ABOVE SCALES MAY BE USED.

J.U.L.I.E.  
JOINT UTILITY LOCATION INFORMATION FOR EXCAVATION  
1-800-892-0123  
OR 811

PROJECT ENGINEER: SAL MADONIA  
SQUAD LEADER: MARCUS BRUCE

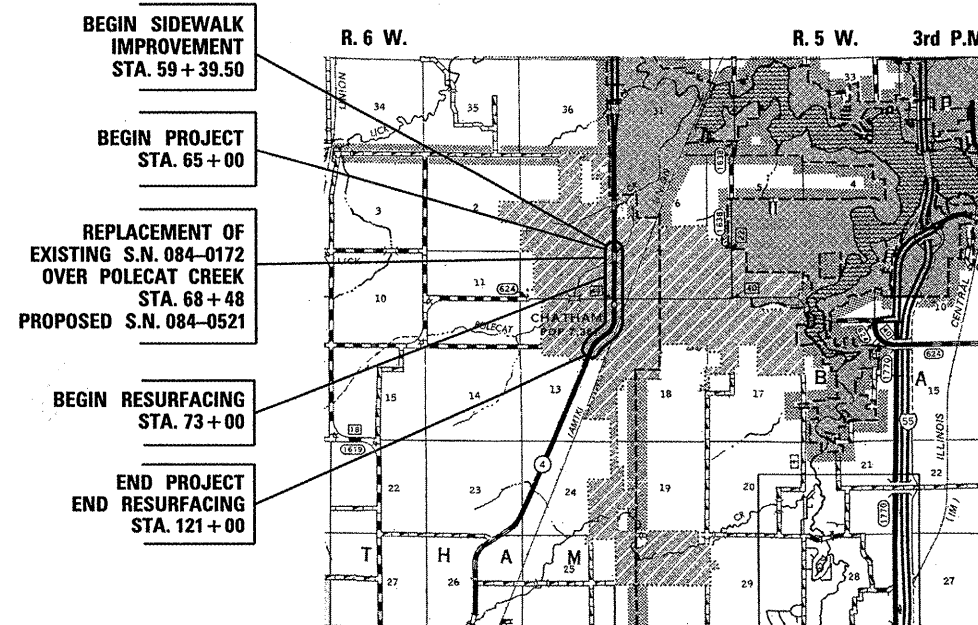
CONTRACT NO. 72A73

STATE OF ILLINOIS  
DEPARTMENT OF TRANSPORTATION

DIVISION OF HIGHWAYS

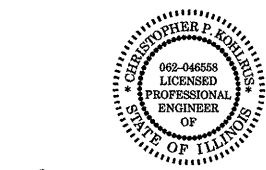
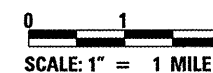
**PROPOSED  
HIGHWAY PLANS**

F.A.P. ROUTE 662 (IL 4)  
SECTION H(RS-10,B-2)  
PROJECT: ACBRF-0662(065)  
SANGAMON COUNTY  
C-96-073-09

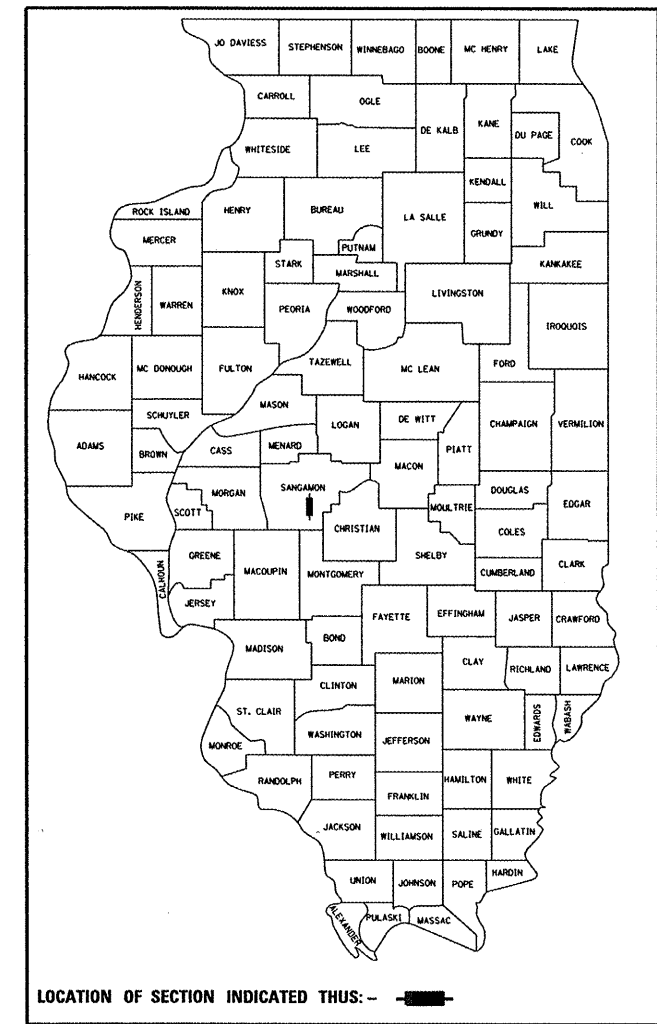


**LOCATION MAP**

NET LENGTH OF PROJECT = 5,600 FEET = 1.061 MILES



Christopher P. Kohlman 6/25/10  
EXPIRATION: 11/30/2011



ADT = 15,800 (2005)  
% SU = 3.0 (2005)  
% MU = 3.0 (2005)  
TOWNSHIP: CHATHAM  
FUNCTIONAL CLASSIFICATION: OTHER PRINCIPAL ARTERIAL

STATE OF ILLINOIS  
DEPARTMENT OF TRANSPORTATION  
DIVISION OF HIGHWAYS

SUBMITTED: June 29 2010  
Rye A. Driskel  
DEPUTY DIRECTOR OF HIGHWAYS, REGION ENGINEER

August 13 2010  
Scott E. Stitt, P.E.  
ACTING ENGINEER OF DESIGN AND ENVIRONMENT

August 13 2010  
Christine M. Reeder  
DIRECTOR OF HIGHWAYS, CHIEF ENGINEER

PRINTED BY THE AUTHORITY  
OF THE STATE OF ILLINOIS

Rev.