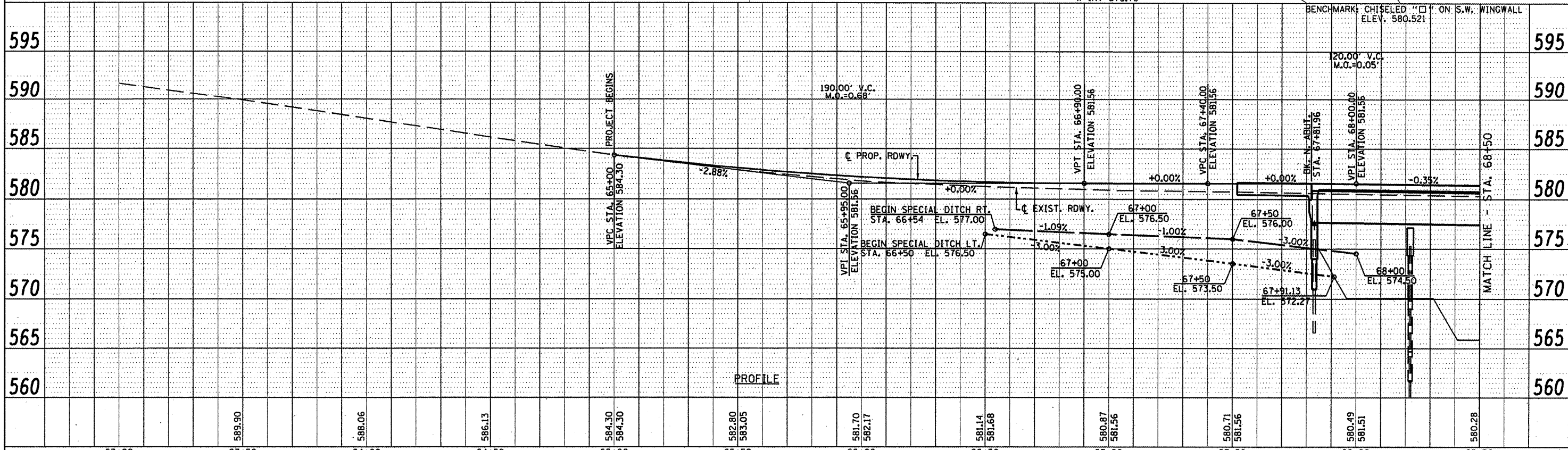
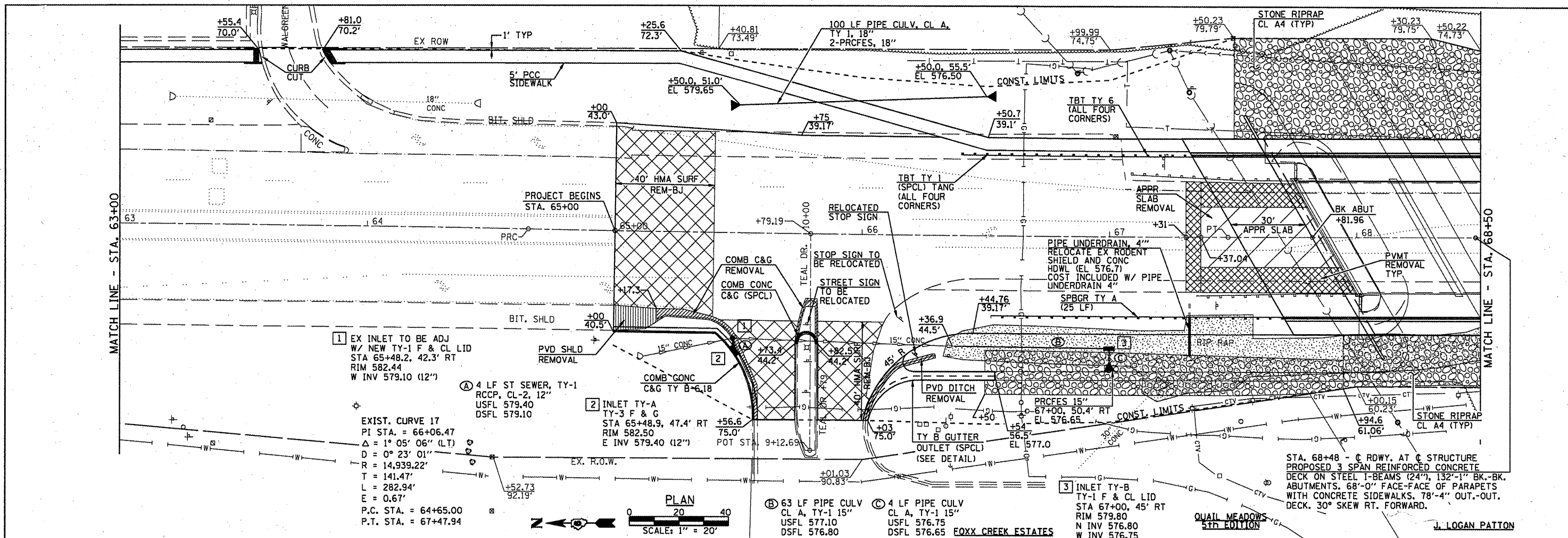


DATE	
BY	
DESIGNED	
CHECKED	
PLANNED	
NOTED	
NO.	

DATE	
BY	
DESIGNED	
CHECKED	
PLANNED	
NOTED	
NO.	



USER NAME = leahlinr1	DESIGNED -	REVISED -
DESIGNED -	CHECKED -	REVISED -
CHECKED -	DRAWN -	REVISED -
DRAWN -	CHECKED -	REVISED -

Allen Henderson & Associates, Inc.
 Civil and Structural Engineers Springfield, IL
 62708 Phone: (217)544-8033 IL Design Firm
 No. 184-001907

SCALE: 1" = 20'	
SHEET NO. 2 OF 3 SHEETS	
STA. 63+00.00 TO STA. 68+50.00	

F.A.P. RTE.	SECTION	COUNTY	TOTAL SHEETS	SHEET NO.
662	HRS-10,B-21	SANGAMON	84	22
FED. ROAD DIST. NO.		ILLINOIS FED. AID PROJECT		

PLAN & PROFILE

MATCH LINE - STA. 68+50

MATCH LINE - STA. 63+00

J. LOGAN PATTON

QUAIL MEADOWS 5TH EDITION

EQXX CREEK ESTATES

STA. 68+48 - @ RDWY. AT @ STRUCTURE PROPOSED 3 SPAN REINFORCED CONCRETE DECK ON STEEL I-BEAMS (24"), 132"-1" BK.-BK. ABUTMENTS, 68'-0" FACE-TO-FACE OF PARAPETS WITH CONCRETE SIDEWALKS, 78'-4" OUT-TO-OUT, DECK, 30° SKEW RT. FORWARD.

1 EX INLET TO BE ADJ W/ NEW TY-1 F & CL LID STA 65+48.2, 42.3' RT RIM 582.44 W INV 579.10 (12")

EXIST. CURVE 17
 PI STA. = 66+06.47
 $\Delta = 1^{\circ} 05' 06''$ (LT)
 $D = 0^{\circ} 23' 01''$
 $R = 14,939.22'$
 $T = 141.47'$
 $L = 282.94'$
 $E = 0.67'$
 P.C. STA. = 64+65.00
 P.T. STA. = 67+47.94

A 4 LF ST SEWER, TY-1 RCCP, CL-2, 12" USFL 579.40 DSFL 579.10

2 INLET TY-A TY-3 F & G STA 65+48.9, 47.4' RT STA 582.50 RIM 582.50 E INV 579.40 (12")

B 63 LF PIPE CULV CL A, TY-1 15" USFL 577.10 DSFL 576.80

C 4 LF PIPE CULV CL A, TY-1 15" USFL 576.75 DSFL 576.65

3 INLET TY-B TY-1 F & CL LID STA 67+00, 45' RT STA 579.80 RIM 579.80 N INV 576.80 W INV 576.75