

GUARDRAIL SCHEDULE

TRAFFIC BARRIER TERMINAL
TYPE 1 SPECIAL (TANGENT)
STA 689+82.1, LT TO STA 690+32.1 LT

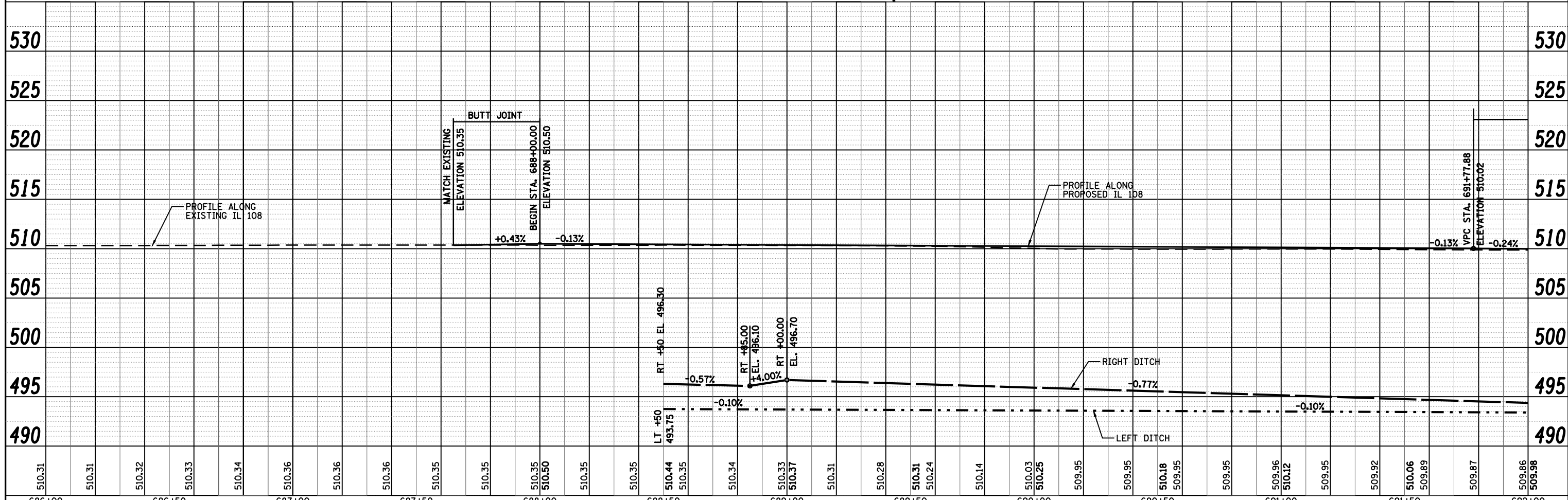
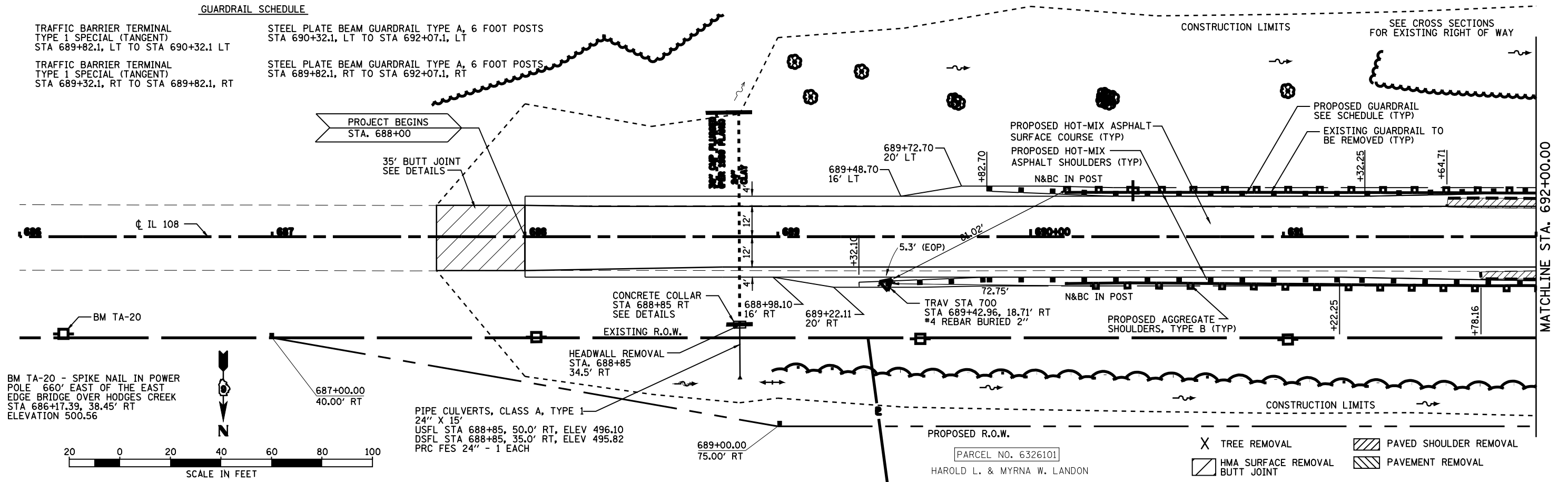
TRAFFIC BARRIER TERMINAL
TYPE 1 SPECIAL (TANGENT)
STA 689+32.1, RT TO STA 689+82.1, RT

STEEL PLATE BEAM GUARDRAIL TYPE A, 6 FOOT POSTS
STA 690+32.1, LT TO STA 692+07.1, LT

STEEL PLATE BEAM GUARDRAIL TYPE A, 6 FOOT POSTS
STA 689+82.1, RT TO STA 692+07.1, RT

DATE	
BY	
PLAN	
NO. _____	
DATE	
BY	
PROF. _____	
NO. _____	

DATE	
BY	
PROF. _____	
NO. _____	



FILE NAME =	USER NAME = laughlinr1	DESIGNED -	REVISED -
ct:\pwork\PWIDOT\LAUGHLINR1\0212999\672494-Sht-Plnprf.dgn		DRAWN -	REVISED -
	PLOT SCALE = 40.0000' / IN.	CHECKED -	REVISED -
	PLOT DATE = Jun-28-2010 02:00:31PM	DATE -	REVISED -

**STATE OF ILLINOIS
DEPARTMENT OF TRANSPORTATION**

PLAN & PROFILE IL 108

SCALE: STA. TO STA.

F.A.P. RTE. 761	SECTION 107B-2	COUNTY MACOUPIN	TOTAL SHEETS 98	SHEET NO. 12
FED. ROAD DIST. NO.		ILLINOIS FED. AID PROJECT		

MATCHLINE STA. 692+00.00