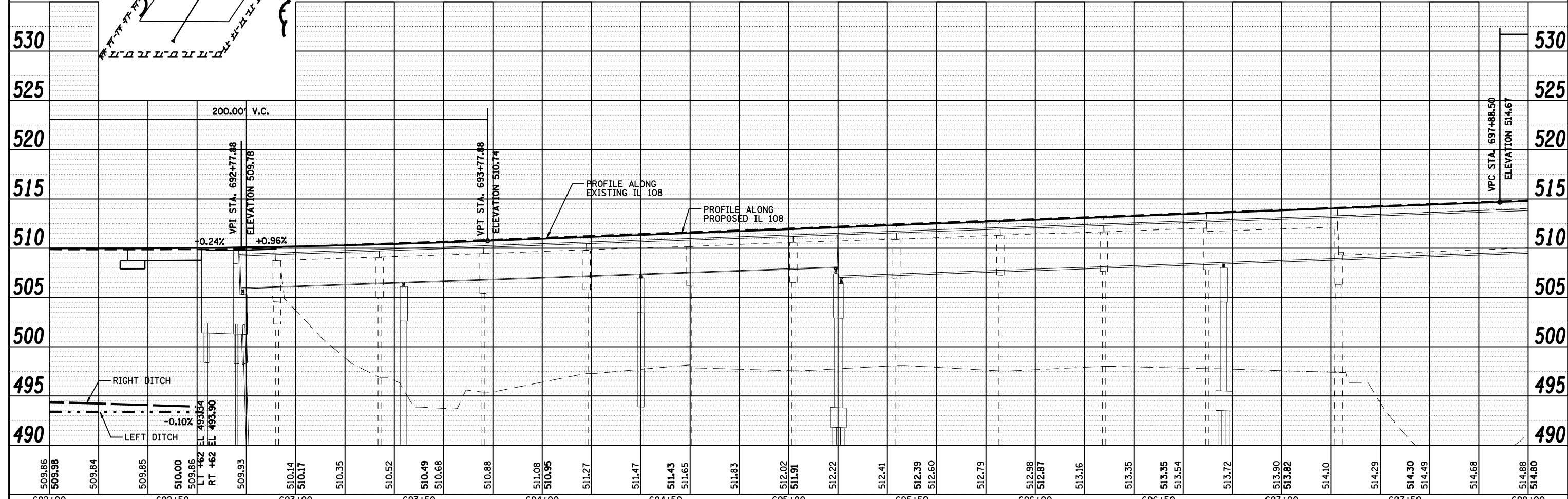
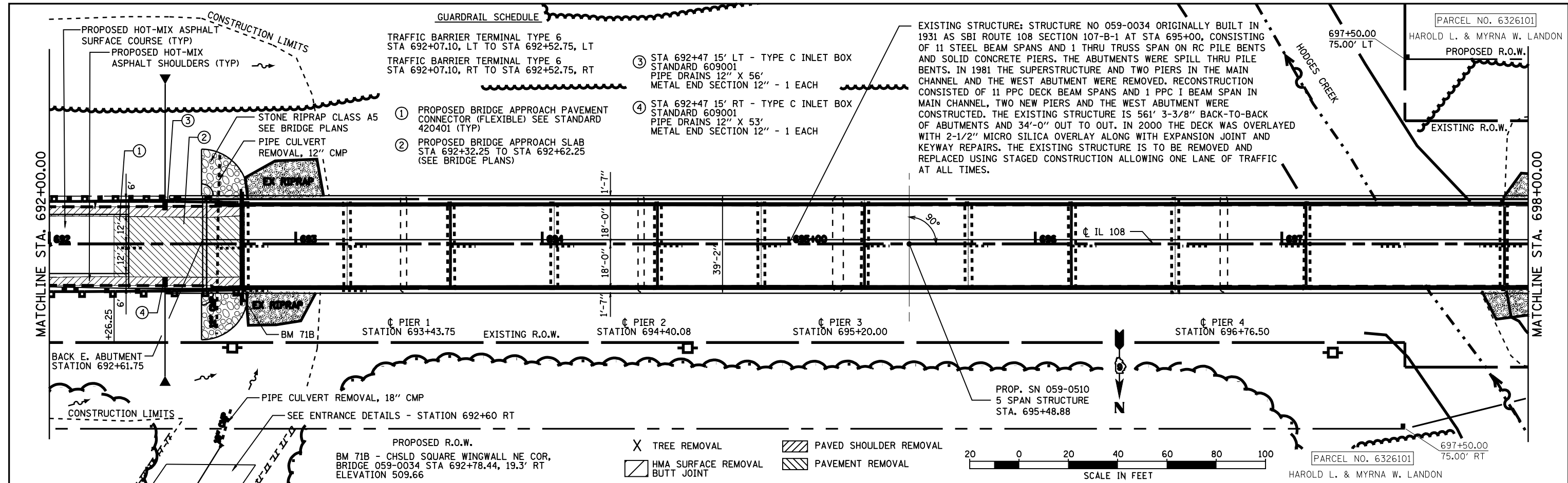


DATE	
BY	
PLAN	SURVEYED
	NOTED
	CHECKED
	DATE
	FILE NAME

DATE	
BY	
PROFILE	SURVEYED
	NOTED
	CHECKED
	DATE
	FILE NAME



FILE NAME =	USER NAME = laughlin1	DESIGNED -	REVISED -
ct:\pwork\PWIDOT\LAUGHLIN\0212999\672494-Sht-Plnprf.dgn		DRAWN -	REVISED -
PLOT SCALE = 40.0000' / IN.		CHECKED -	REVISED -
PLOT DATE = Jun-28-2010 02:00:35PM		DATE -	REVISED -

STATE OF ILLINOIS
DEPARTMENT OF TRANSPORTATION

PLAN & PROFILE IL 108

SCALE: STA. TO STA.

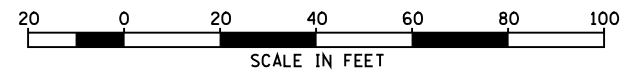
F.A.P. RTE. 761	SECTION 107B-2	COUNTY MACOUPIN	TOTAL SHEETS 98	SHEET NO. 13
FED. ROAD DIST. NO.		ILLINOIS FED. AID PROJECT		

PARCEL NO. 6326101
HAROLD L. & MYRNA W. LANDON
PROPOSED R.O.W.
EXISTING R.O.W.
HODGES CREEK
697+50.00 75.00' LT
697+50.00 75.00' RT

EXISTING STRUCTURE: STRUCTURE NO 059-0034 ORIGINALLY BUILT IN 1931 AS SBI ROUTE 108 SECTION 107-B-1 AT STA 695+00, CONSISTING OF 11 STEEL BEAM SPANS AND 1 THRU TRUSS SPAN ON RC PILE BENTS AND SOLID CONCRETE PIERS. THE ABUTMENTS WERE SPILL THRU PILE BENTS. IN 1981 THE SUPERSTRUCTURE AND TWO PIERS IN THE MAIN CHANNEL AND THE WEST ABUTMENT WERE REMOVED. RECONSTRUCTION CONSISTED OF 11 PPC DECK BEAM SPANS AND 1 PPC I BEAM SPAN IN MAIN CHANNEL, TWO NEW PIERS AND THE WEST ABUTMENT WERE CONSTRUCTED. THE EXISTING STRUCTURE IS 561' 3-3/8" BACK-TO-BACK OF ABUTMENTS AND 34'-0" OUT TO OUT. IN 2000 THE DECK WAS OVERLAYED WITH 2-1/2" MICRO SILICA OVERLAY ALONG WITH EXPANSION JOINT AND KEYWAY REPAIRS. THE EXISTING STRUCTURE IS TO BE REMOVED AND REPLACED USING STAGED CONSTRUCTION ALLOWING ONE LANE OF TRAFFIC AT ALL TIMES.

- ① PROPOSED BRIDGE APPROACH PAVEMENT CONNECTOR (FLEXIBLE) SEE STANDARD 420401 (TYP)
- ② PROPOSED BRIDGE APPROACH SLAB STA 692+32.25 TO STA 692+62.25 (SEE BRIDGE PLANS)
- ③ STA 692+47 15' LT - TYPE C INLET BOX STANDARD 609001 PIPE DRAINS 12" X 56' METAL END SECTION 12" - 1 EACH
- ④ STA 692+47 15' RT - TYPE C INLET BOX STANDARD 609001 PIPE DRAINS 12" X 53' METAL END SECTION 12" - 1 EACH

- X TREE REMOVAL
- PAVED SHOULDER REMOVAL
- HMA SURFACE REMOVAL
- PAVEMENT REMOVAL
- BUTT JOINT



PROPOSED R.O.W.
BM 71B - CHSLD SQUARE WINGWALL NE COR, BRIDGE 059-0034 STA 692+78.44, 19.3' RT ELEVATION 509.66