

STATE OF ILLINOIS
DEPARTMENT OF TRANSPORTATION

SOUTH EDGE OF SHOULDER

Location	Station	Offset	Theoretical Grade Elevations
E. End of E. Appr	692+32.25	-18.00	509.43
A	692+42.25	-18.00	509.51
B	692+52.25	-18.00	509.66
W. End of E. Appr	692+62.25	-18.00	509.75

SOUTH EDGE OF PAVEMENT

Location	Station	Offset	Theoretical Grade Elevations
E. End of E. Appr	692+32.25	-12.00	509.79
A	692+42.25	-12.00	509.80
B	692+52.25	-12.00	509.82
W. End of E. Appr	692+62.25	-12.00	509.84

STAGE CONSTRUCTION JOINT

Location	Station	Offset	Theoretical Grade Elevations
E. End of E. Appr	692+32.25	-1.75	509.95
A	692+42.25	-1.75	509.96
B	692+52.25	-1.75	509.98
W. End of E. Appr	692+62.25	-1.75	510.00

☉ FAP 761

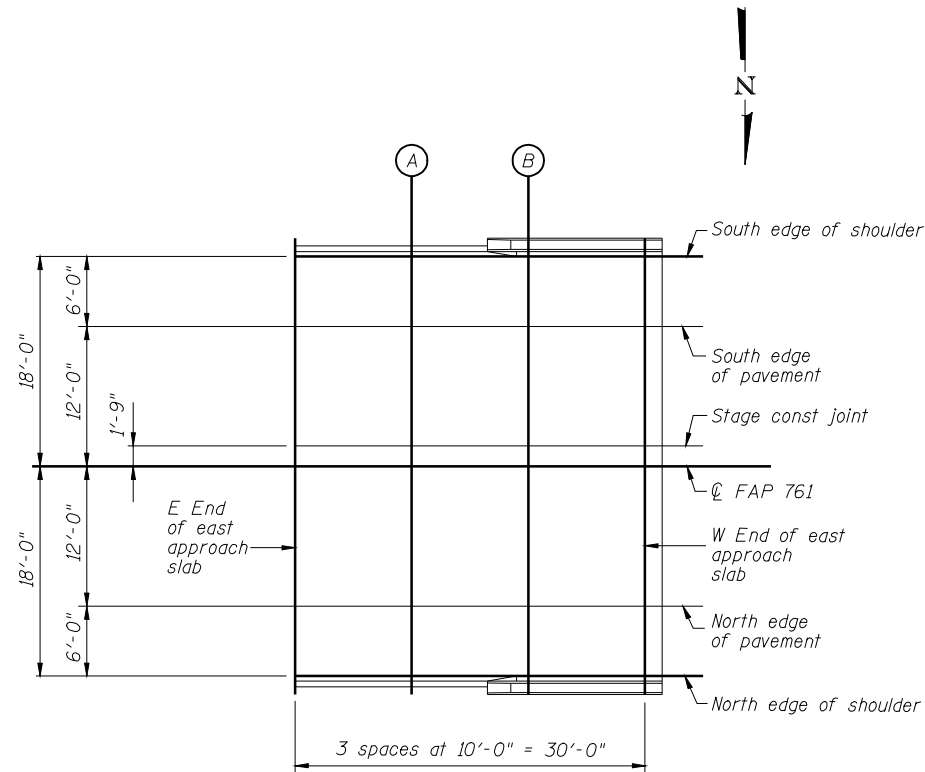
Location	Station	Offset	Theoretical Grade Elevations
E. End of E. Appr	692+32.25	0.00	509.98
A	692+42.25	0.00	509.99
B	692+52.25	0.00	510.01
W. End of E. Appr	692+62.25	0.00	510.03

NORTH EDGE OF PAVEMENT

Location	Station	Offset	Theoretical Grade Elevations
E. End of E. Appr	692+32.25	12.00	509.79
A	692+42.25	12.00	509.80
B	692+52.25	12.00	509.82
W. End of E. Appr	692+62.25	12.00	509.84

NORTH EDGE OF SHOULDER

Location	Station	Offset	Theoretical Grade Elevations
E. End of E. Appr	692+32.25	18.00	509.43
A	692+42.25	18.00	509.51
B	692+52.25	18.00	509.66
W. End of E. Appr	692+62.25	18.00	509.75



PLAN

DESIGNED -	J.M.B.
CHECKED -	T.E.S.
DRAWN -	R KING
CHECKED -	J.M.B.

HOMER L. CHASTAIN & ASSOCIATES, LLP
CONSULTING ENGINEERS
DECATUR (217) 422-8544
CHICAGO (773) 714-0050
ROCKFORD (815) 489-0050
184-001397

E-AS 11-1-06

**TOP OF EAST APPROACH SLAB ELEVATIONS
STRUCTURE NUMBER 059-0510**

SHEET NO. 14 OF 51 SHEETS	F.A.P. RTE. 761	SECTION 107B-2	COUNTY MACOUPIN	TOTAL SHEETS 98	SHEET NO. 44
	FAP ROUTE 761 (IL RT 108)		CONTRACT NO. 72A94		
FED. ROAD DIST. NO.		ILLINOIS FED. AID PROJECT			