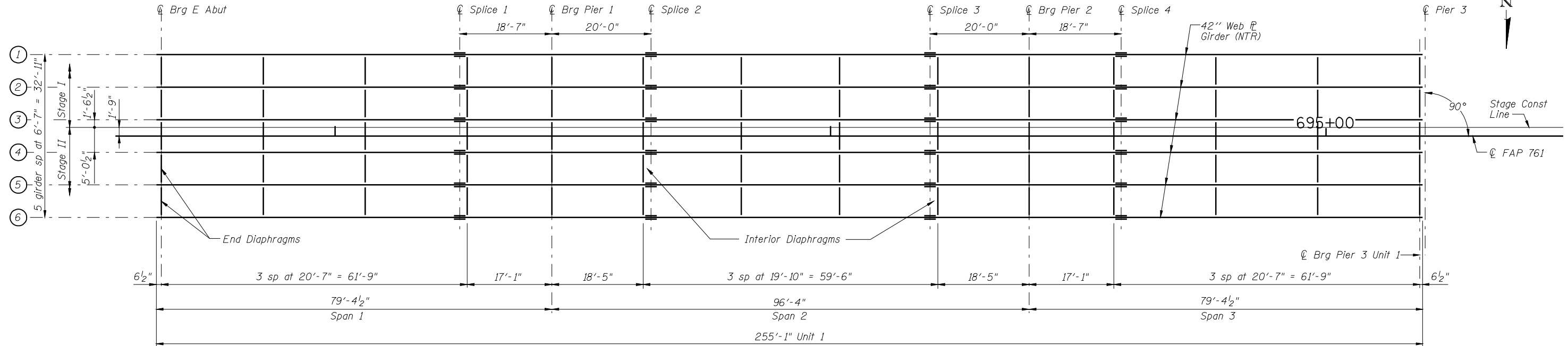
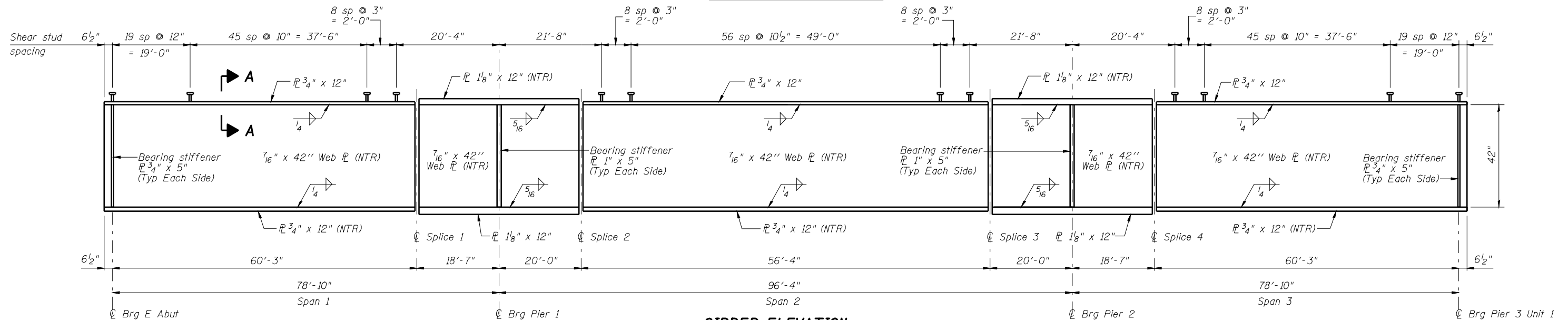


STATE OF ILLINOIS
DEPARTMENT OF TRANSPORTATION



FRAMING PLAN - UNIT 1



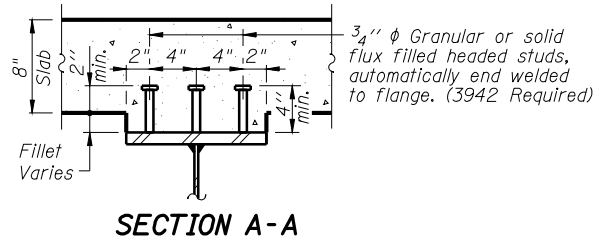
GIRDER ELEVATION

"NTR" denotes plates to which notch toughness requirements are applicable.

NOTES:

Structural steel shall be AASHTO M270 Grade 50W for the girders, diaphragms and connection plates and all splice plate material.

Load carrying components designated "NTR" shall conform to the Supplemental Requirements For Notch Toughness, Zone 2.



SECTION A-A

DESIGNED -	J.M.B.
CHECKED -	T.E.S.
DRAWN -	R KING
CHECKED -	J.M.B.

HOMER L. CHASTAIN & ASSOCIATES, LLP
CONSULTING ENGINEERS
DECATUR (217) 422-8544
CHICAGO (773) 714-0050
ROCKFORD (815) 489-0050
184-001397

**FRAMING PLAN AND DETAILS - UNIT 1
STRUCTURE NUMBER 059-0510**

SHEET NO. 24 OF 51 SHEETS	F.A.P. RTE. 761	SECTION 107B-2	COUNTY MACOUPIN	TOTAL SHEETS 98	SHEET NO. 54
	FAP ROUTE 761 (IL RT 108)		CONTRACT NO. 72A94		
FED. ROAD DIST. NO.		ILLINOIS FED. AID PROJECT			