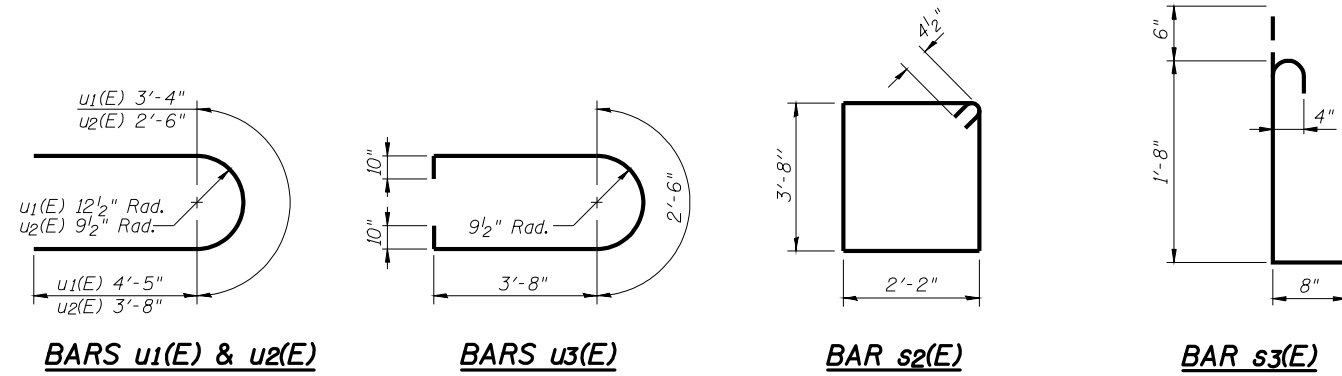


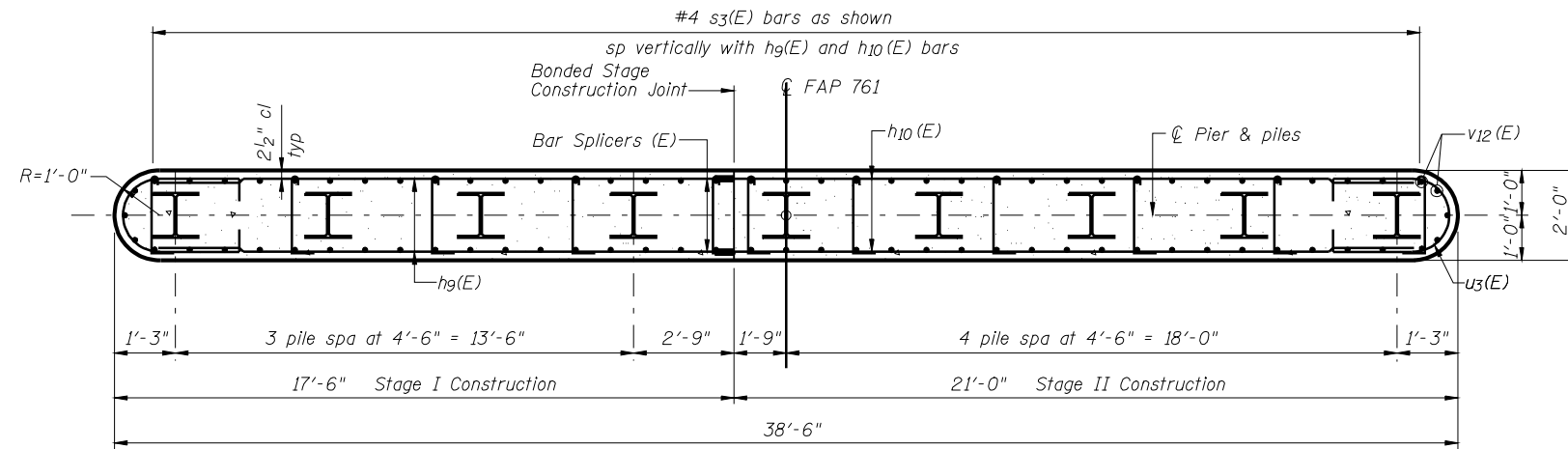
STATE OF ILLINOIS
DEPARTMENT OF TRANSPORTATION



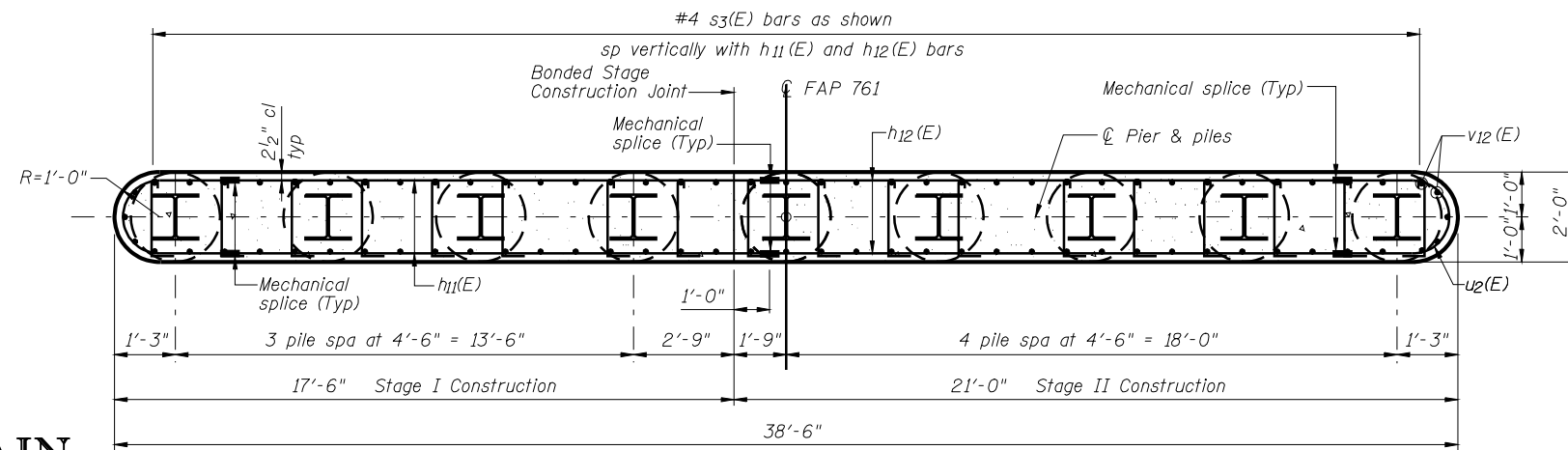
Alternate the position of the 90° hooks on the s3(E) bars in the field.

BILL OF MATERIAL

Bar	No.	Size	Length	Shape
h9(E)	20	#5	16'-4"	—
h10(E)	20	#5	19'-10"	—
h11(E)	12	#5	14'-3"	—
h12(E)	12	#5	15'-9"	—
p4(E)	14	#7	16'-4"	—
p5(E)	14	#7	19'-10"	—
s2(E)	34	#4	12'-5"	⊔
s3(E)	218	#4	2'-10"	⊔
u1(E)	10	#6	12'-2"	⊔
u2(E)	12	#5	9'-10"	⊔
u3(E)	20	#5	11'-6"	⊔
v12(E)	80	#5	13'-7"	—
Structure Excavation		Cu. Yd.	38	
Concrete Structures		Cu. Yd.	48.5	
Reinforcement Bars, Epoxy Coated		Pound	4540	
Furnishing Steel Piles HP12x63		Foot	600	
Driving Piles		Foot	600	
Mechanical Splice		Each	36	
Concrete Encasement		Cu. Yd.	3.2	
Test Pile Steel HP12x63		Each	1	
Pile Shoes		Each	9	
Bar Splicers		Each	34	



SECTION B-B



SECTION C-C

Note:
Pour steps monolithically with cap.
For details of Bar Splicers, see sheet 45 of 51.
For details of piles and Concrete Encasement, see sheet 44 of 51.
All edges shall have standard 3/4" chamfer.
Space reinforcement in cap to miss anchor bolts.

**PIER 1 DETAILS
STRUCTURE NUMBER 059-0510**

DESIGNED -	J.M.B.
CHECKED -	T.E.S.
DRAWN -	R KING
CHECKED -	J.M.B.

HOMER L. CHASTAIN & ASSOCIATES, LLP
CONSULTING ENGINEERS
DECATUR (217) 422-8544
CHICAGO (773) 714-0050
ROCKFORD (815) 489-0050
184-001397

SHEET NO. 37 OF 51 SHEETS	F.A.P. RTE. 761	SECTION 107B-2	COUNTY MACOUPIN	TOTAL SHEETS 98	SHEET NO. 67
	FAP ROUTE 761 (IL RT 108)		CONTRACT NO. 72A94		
FED. ROAD DIST. NO.		ILLINOIS FED. AID PROJECT			