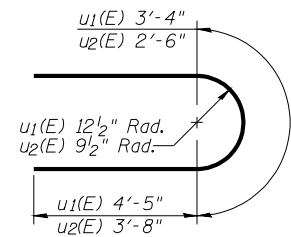
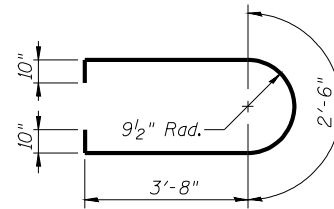


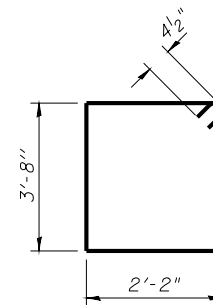
STATE OF ILLINOIS
DEPARTMENT OF TRANSPORTATION



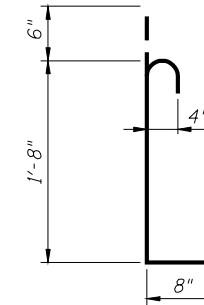
BARS u1(E) & u2(E)



BARS u3(E)



BAR s2(E)

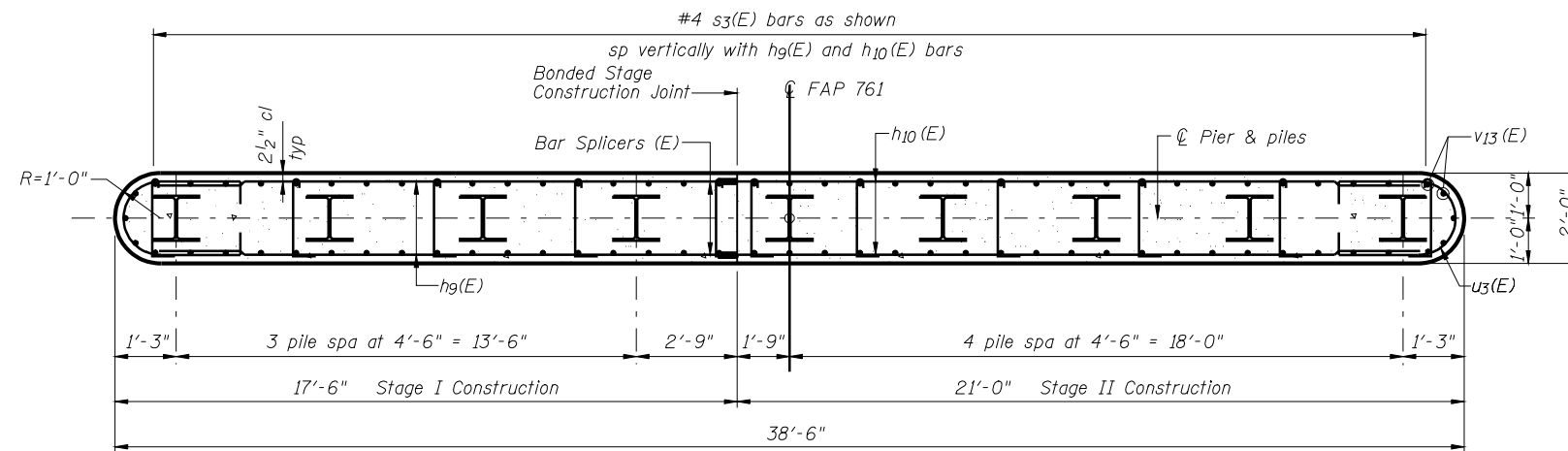


BAR s3(E)

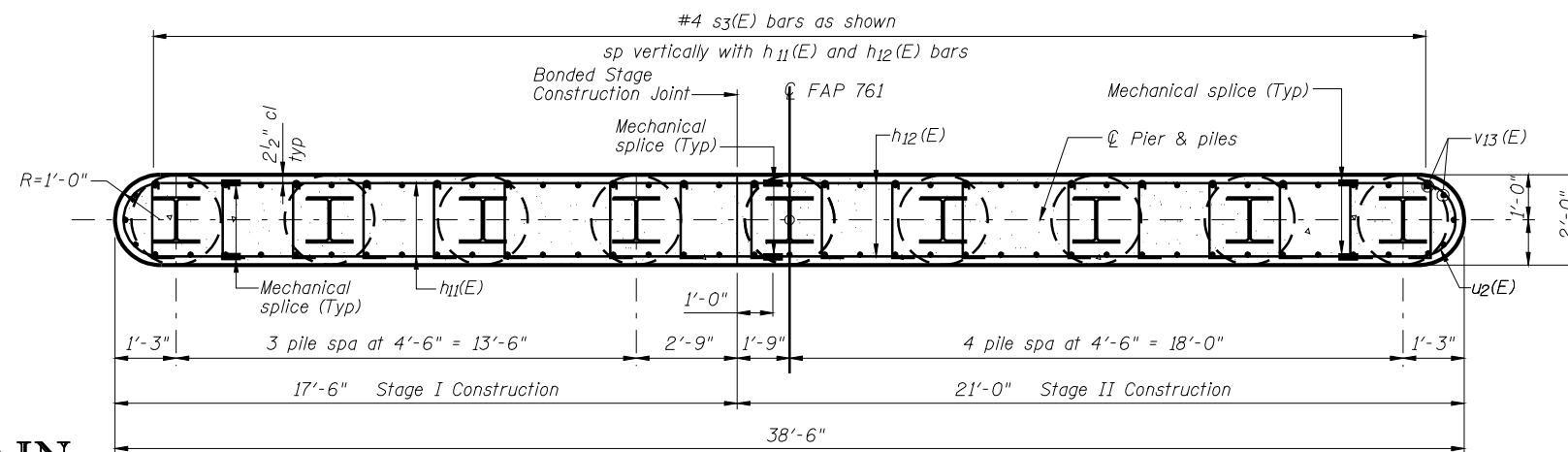
Alternate the position of the 90° hooks on the s3(E) bars in the field.

BILL OF MATERIAL

Bar	No.	Size	Length	Shape
h9(E)	14	#5	16'-4"	—
h10(E)	14	#5	19'-10"	—
h11(E)	10	#5	14'-3"	—
h12(E)	10	#5	15'-9"	—
p4(E)	14	#7	16'-4"	—
p5(E)	14	#7	19'-10"	—
s2(E)	34	#4	12'-5"	⊠
s3(E)	167	#4	2'-10"	└┘
u1(E)	10	#6	12'-2"	U
u2(E)	10	#5	9'-10"	U
u3(E)	14	#5	11'-6"	U
v13(E)	80	#5	10'-3"	—
Structure Excavation	Cu. Yd.	39		
Concrete Structures	Cu. Yd.	39.0		
Reinforcement Bars, Epoxy Coated	Pound	3780		
Furnishing Steel Piles HP12x63	Foot	624		
Driving Piles	Foot	624		
Mechanical Splice	Each	30		
Concrete Encasement	Cu. Yd.	3.2		
Test Pile Steel HP12x63	Each	1		
Pile Shoes	Each	9		
Bar Splicers	Each	28		



SECTION B-B



SECTION C-C

Note:
Four steps monolithically with cap.
For details of Bar Splicers, see sheet 45 of 51.
For details of piles and Concrete Encasement, see sheet 44 of 51.
All edges shall have standard 3/4" chamfer.
Space reinforcement in cap to miss anchor bolts.

DESIGNED -	J.M.B.
CHECKED -	T.E.S.
DRAWN -	R KING
CHECKED -	J.M.B.

HOMER L. CHASTAIN & ASSOCIATES, LLP
CONSULTING ENGINEERS
DECATUR (217) 422-8544
CHICAGO (773) 714-0050
ROCKFORD (815) 489-0050
184-001397

**PIER 2 DETAILS
STRUCTURE NUMBER 059-0510**

SHEET NO. 39 OF 51 SHEETS	F.A.P. RTE. 761	SECTION 107B-2	COUNTY MACOUPIN	TOTAL SHEETS 98	SHEET NO. 69
	FAP ROUTE 761 (IL RT 108)		CONTRACT NO. 72A94		
FED. ROAD DIST. NO.		ILLINOIS FED. AID PROJECT			