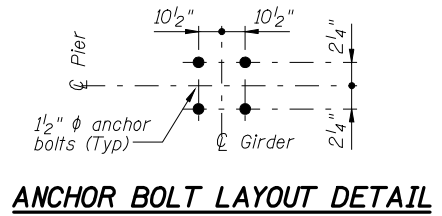
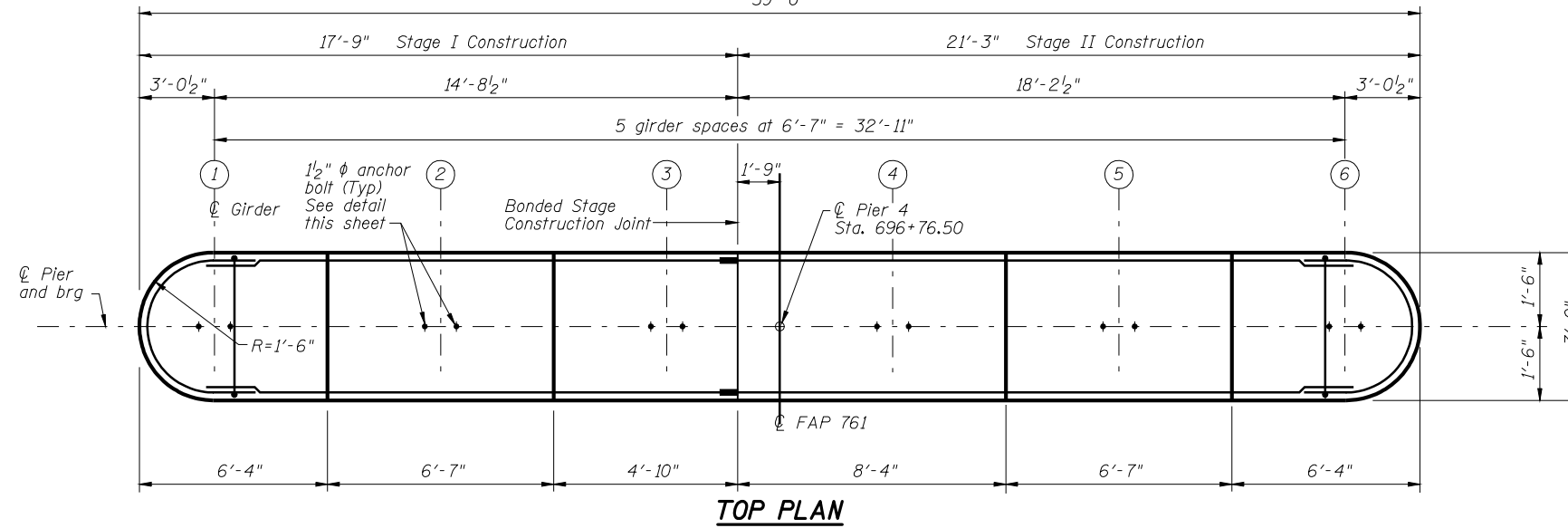
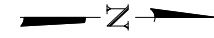
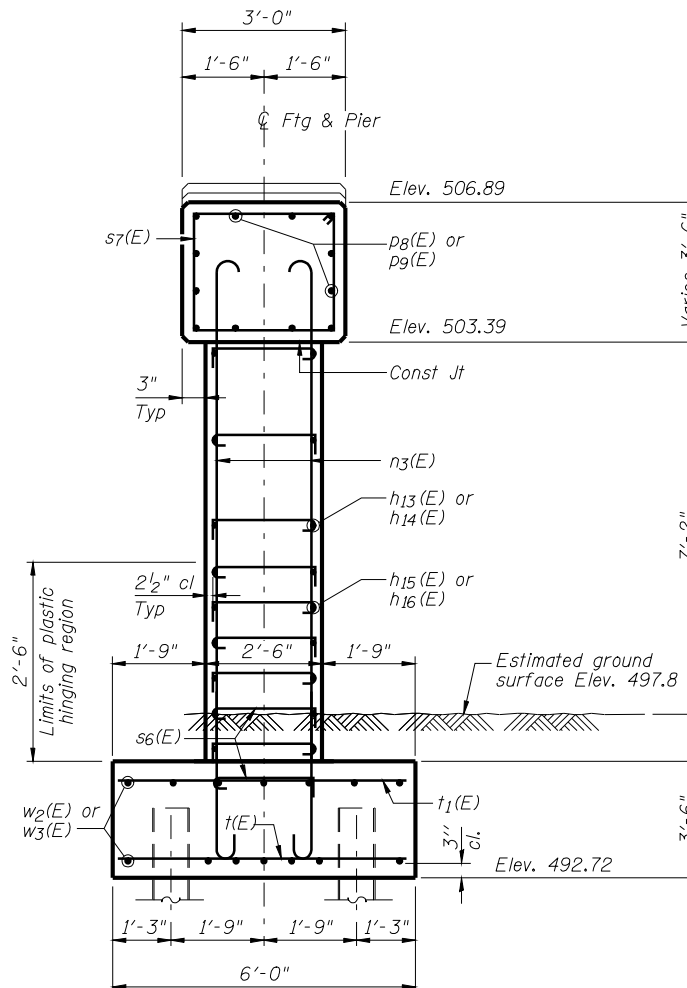


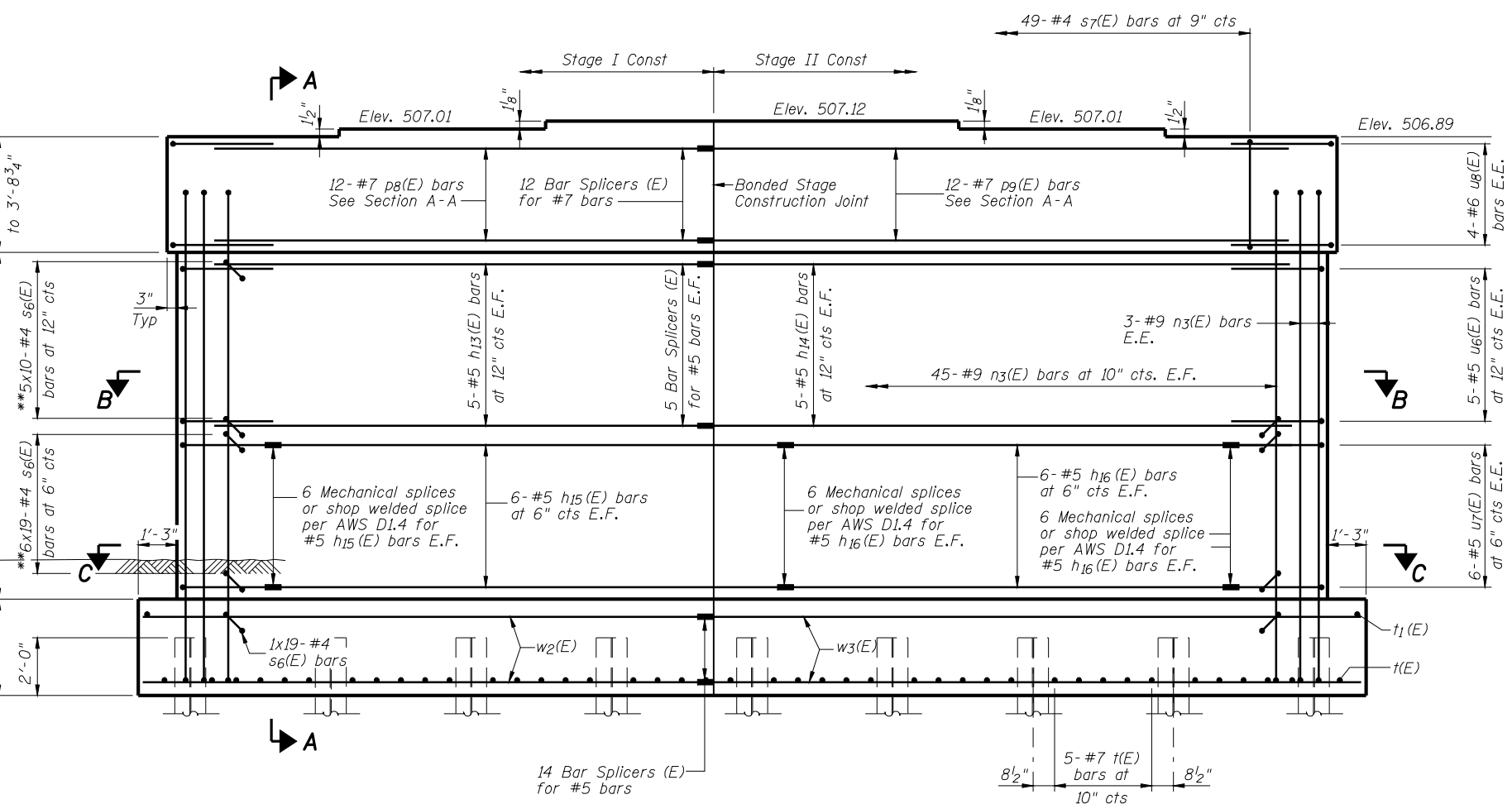
STATE OF ILLINOIS
DEPARTMENT OF TRANSPORTATION
39'-0"



MIN BAR LAP
#5 bar = 3'-8"
#6 bar = 4'-5"



SECTION A-A



ELEVATION
(Looking Up Station)

Note:
The 90° hooks of two successive crossties, s6(E), shall be alternated end for end as shown in Sec A-A. For horizontal spacing see sheet 43 of 51.
Bars indicated thus 10x14-#4 etc indicates 10 lines of bars with 14 bars per line.
E.F. = Each Face E.E. = Each End

**PIER 4 DETAILS
STRUCTURE NUMBER 059-0510**

DESIGNED -	J.M.B.
CHECKED -	T.E.S.
DRAWN -	R KING
CHECKED -	J.M.B.

HOMER L. CHASTAIN & ASSOCIATES, LLP
CONSULTING ENGINEERS
DECATUR (217) 422-8544
CHICAGO (773) 714-0050
ROCKFORD (815) 489-0050
184-001397

SHEET NO. 42 OF 51 SHEETS	F.A.P. RTE. 761	SECTION 107B-2	COUNTY MACOUPIN	TOTAL SHEETS 98	SHEET NO. 72
	FAP ROUTE 761 (IL RT 108)		CONTRACT NO. 72A94		
FED. ROAD DIST. NO.		ILLINOIS FED. AID PROJECT			