

STATE OF ILLINOIS
DEPARTMENT OF TRANSPORTATION

INDEX OF SHEETS

- 1 General Plan
- 2 General Structure Data
- 3 Foundation Plan and Details
- 4 Stage Construction Details
- 5 Temporary Concrete Barrier For Stage Construction
- 6 Deck Elevations - Unit 1
- 7 Deck Elevations - Unit 1
- 8 Deck Elevations - Unit 1
- 9 Deck Elevations - Unit 1
- 10 Deck Elevations - Unit 2
- 11 Deck Elevations - Unit 2
- 12 Deck Elevations - Unit 2
- 13 Deck Elevations - Unit 2
- 14 Top of East Approach Slab Elevations
- 15 Top of West Approach Slab Elevations
- 16 Bridge Approach Slab Details
- 17 Bridge Approach Slab Details
- 18 Deck Plan And Cross Section - Unit 1
- 19 Deck Plan And Cross Section - Unit 2
- 20 Superstructure Details
- 21 Superstructure Details
- 22 Preformed Joint Strip Seal
- 23 Drainage Scupper, DS-11
- 24 Framing Plan and Details - Unit 1
- 25 Framing Plan and Details - Unit 2
- 26 Framing Details - Unit 1
- 27 Framing Details - Unit 2
- 28 Moment Tables - Unit 1
- 29 Moment Tables - Unit 2
- 30 Bearing Details - Unit 1
- 31 Bearing Details - Unit 2
- 32 East Abutment Details
- 33 East Abutment Details
- 34 West Abutment Details
- 35 West Abutment Details
- 36 Pier 1 Details
- 37 Pier 1 Details
- 38 Pier 2 Details
- 39 Pier 2 Details
- 40 Pier 3 Details
- 41 Pier 3 Details
- 42 Pier 4 Details
- 43 Pier 4 Details
- 44 Steel HP Pile Details
- 45 Bar Splicer Assembly And Mechanical Splicer Details
- 46 Concrete Parapet Slipforming Option
- 47 Soil Boring Logs
- 48 Soil Boring Logs
- 49 Soil Boring Logs
- 50 Soil Boring Logs
- 51 Soil Boring Logs

GENERAL NOTES:

Fasteners shall be AASHTO M164 Type 1, mechanically galvanized bolts in painted areas and M164 Type 3 in unpainted areas. Bolts $\frac{1}{2}$ " ϕ in holes $\frac{15}{16}$ " ϕ , unless otherwise noted.

Calculated weight of Structural Steel = 816,700 lb
All structural steel shall be AASHTO M 270 Grade 50W except expansion joints which shall be AASHTO M 270 Grade 50. All structural steel shall be cleaned as specified in the Special Provision for "Surface Preparation and Painting Requirements for Weathering Steel".

No field welding is permitted except as specified in the contract documents. Reinforcement bars shall conform to the requirements of ASTM A 706 Gr 60. See Special Provisions

Bearing seat surfaces shall be constructed or adjusted to their designated elevations within a tolerance of $\frac{1}{8}$ inch (0.01 ft.). Adjustment shall be made either by grinding the surface or by shimming the bearings.

Concrete Sealer shall be applied to the designated areas of the abutments and Pier 3.

All structural steel and exposed surfaces of bearings within a distance of 10 ft. each way from the deck joints shall be painted as specified in the Special Provision for "Surface Preparation and Painting Requirements for Weathering Steel".

Layout of slope protection system may be varied to suit ground conditions in the field as directed by the Engineer.

Reinforcement bars designated (E) shall be epoxy coated.

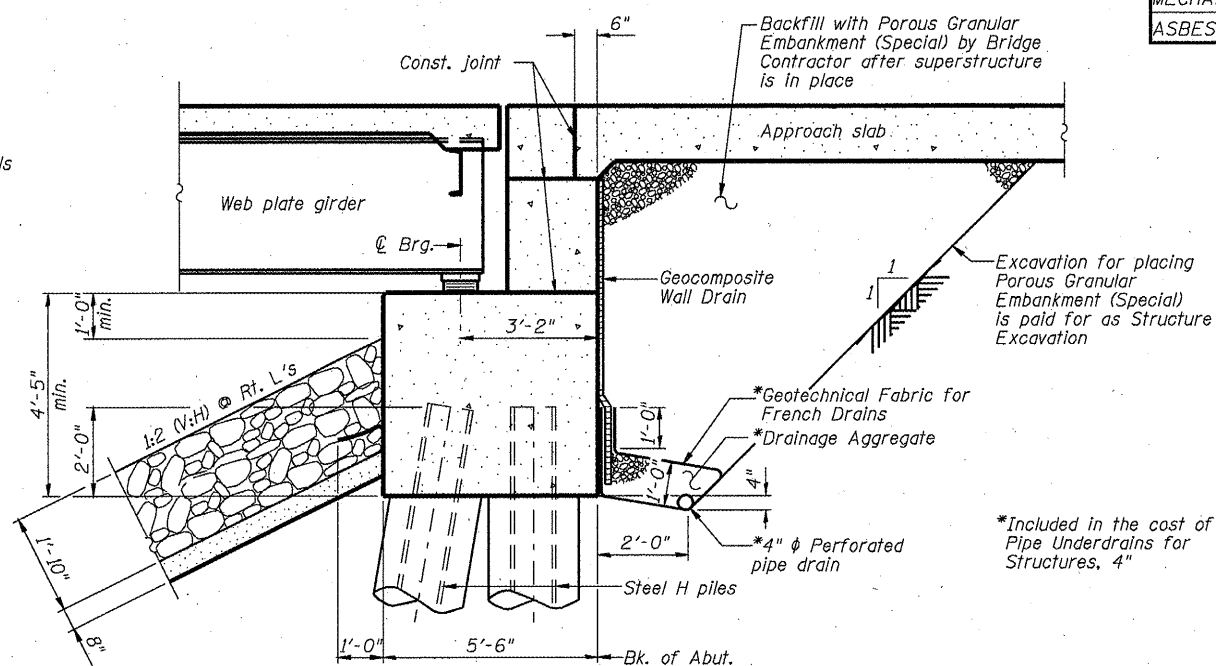
The Contractor is advised that the existing PPC deck beams are in a deteriorated condition with reduced load carrying capacity. It is the Contractor's responsibility to account for the condition of the existing beams when developing construction procedures for removal and replacement of the superstructure.

If the Contractor's procedures for existing beam removal or placement of new beams involves placement of heavy equipment on the existing deck beams, a detailed procedure shall be submitted to the Engineer for approval. The procedure shall include calculations, sealed by an Illinois Licensed Structural Engineer, verifying the structural adequacy of the existing beams for the proposed loads. Cost included with Removal of Existing Structures.

All drainage system components shall extend to 2'-0" from the end of each wingwall except an outlet pipe shall extend until intersecting with the side slopes. The pipes shall drain into concrete headwalls. (See Article 601.05 of the Standard Specifications and Highway Standard 60110.)

TOTAL BILL OF MATERIAL

ITEM	UNIT	SUPER	SUB	TOTAL
POROUS GRANULAR EMBANKMENT, SPECIAL	CU. YD.		154	154
STONE RIPRAP, CLASS A5	SQ. YD.		1205	1205
FILTER FABRIC	SQ. YD.		1205	1205
REMOVAL OF EXISTING STRUCTURES	EACH		1	1
STRUCTURE EXCAVATION	CU. YD.		690	690
CONCRETE STRUCTURES	CU. YD.		389.7	389.7
CONCRETE SUPERSTRUCTURE	CU. YD.	814.7		814.7
BRIDGE DECK GROOVING	SQ. YD.	2378		2378
CONCRETE ENCASEMENT	CU. YD.		18.4	18.4
PROTECTIVE COAT	SQ. YD.	3036		3036
FURNISHING & ERECTING STRUCTURAL STEEL	L SUM	1		1
STUD SHEAR CONNECTORS	EACH	6588		6588
REINFORCEMENT BARS, EPOXY-COATED	POUND	209,560	34,740	244,300
BAR SPLICERS	EACH	1976	257	2233
FURNISHING STEEL PILES HP 12X53	FOOT		1792	1792
FURNISHING STEEL PILES HP 12X63	FOOT		3144	3144
DRIVING PILES	FOOT		4936	4936
TEST PILE STEEL HP 12X53	EACH		2	2
TEST PILE STEEL HP 12X63	EACH		4	4
PILE SHOES	EACH		48	48
NAME PLATES	EACH	1		1
PREFORMED JOINT STRIP SEAL	FOOT	114		114
ELASTOMERIC BEARING ASSEMBLY, TYPE 1	EACH	24		24
ANCHOR BOLTS, 1"	EACH		48	48
ANCHOR BOLTS, 1 1/4"	EACH		12	12
ANCHOR BOLTS, 1 1/2"	EACH		36	36
CONCRETE SEALER	SQ. FT.		1958	1958
GEOCOMPOSITE WALL DRAIN	SQ. YD.		71	71
PIPE UNDERDRAINS FOR STRUCTURES 4"	FOOT		160	160
DRAINAGE SCUPPERS, DS-11	EACH	6		6
TEMPORARY SOIL RETENTION SYSTEM	SQ. FT.		325	325
MECHANICAL SPLICERS	EACH		138	138
ASBESTOS BEARING PAD REMOVAL	EACH		220	220



SECTION THRU PILE SUPPORTED STUB ABUTMENT

(Horiz. dim. @ Rt. L's)

**GENERAL STRUCTURE DATA
STRUCTURE NUMBER 059-0510**

SHEET NO. 2 OF 51 SHEETS	F.A.P. RTE.	SECTION	COUNTY	TOTAL SHEETS	SHEET NO.
	761	107B-2	MACOUPIN	98	32
FAP ROUTE 761 (IL RT 108)		CONTRACT NO. 72A94			
FED. ROAD DIST. NO.		ILLINOIS FED. AID PROJECT			

DESIGNED -	J.M.B.
CHECKED -	T.E.S.
DRAWN -	R KING
CHECKED -	J.M.B.

**HOMER L.
CHASTAIN
& ASSOCIATES, LLP**
CONSULTING ENGINEERS
DECATUR (217) 422-8544
CHICAGO (773) 714-0050
ROCKFORD (815) 489-0050
184-001397