

STATE OF ILLINOIS  
 DEPARTMENT OF TRANSPORTATION  
 DIVISION OF HIGHWAYS

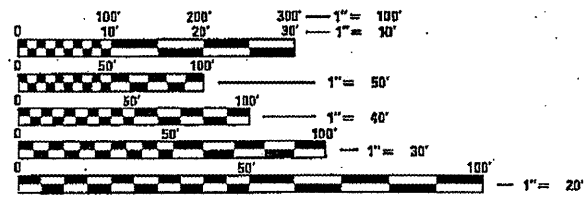
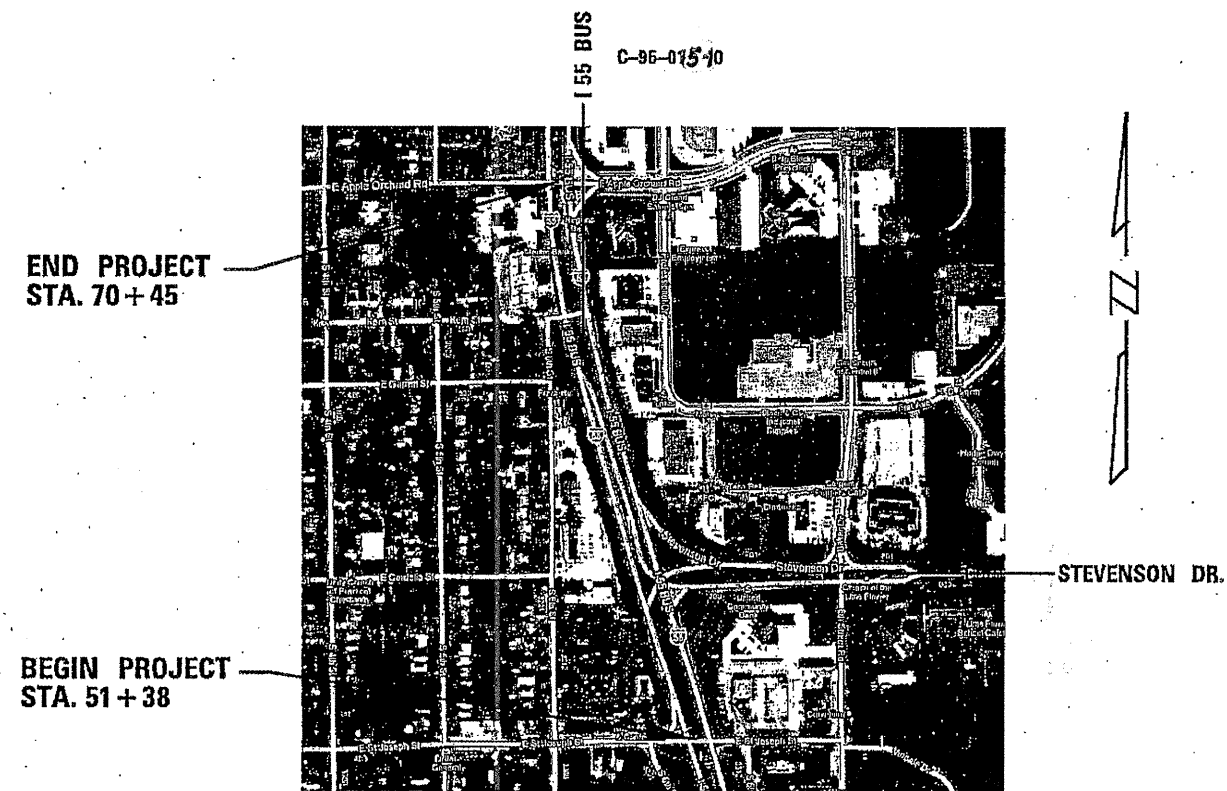
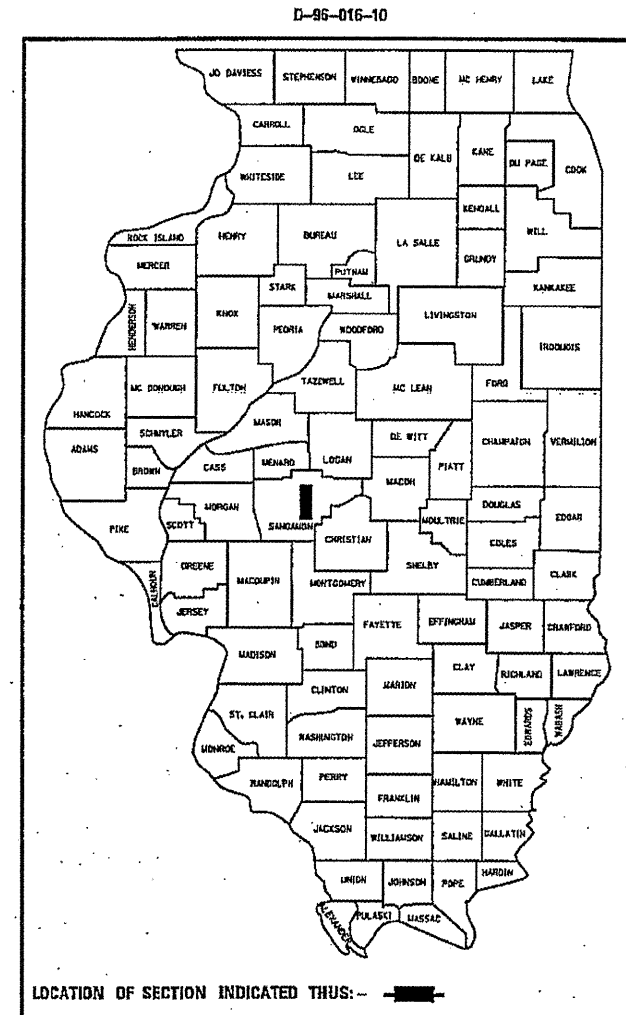
**PROPOSED  
 CONTRACT MAINTENANCE**

FAP 666 I-55 BUSINESS  
 SECTION (15,110X)L

SANGAMON COUNTY

XXX RTE.	SECTION	COUNTY	TOTAL SHEETS	SHEET NO.
XXX	(15,110X)L	SANGAMON	16	1
FED. ROAD DIST. NO.		ILLINOIS	CONTRACT NO. 72D80	

FOR INDEX OF SHEETS, SEE SHEET NO. 2



FULL SIZE PLANS HAVE BEEN PREPARED USING STANDARD ENGINEERING SCALES. REDUCED SIZED PLANS WILL NOT CONFORM TO STANDARD SCALES. IN MAKING MEASUREMENTS ON REDUCED PLANS, THE ABOVE SCALES MAY BE USED.

J.U.L.I.E.  
 JOINT UTILITY LOCATION INFORMATION FOR EXCAVATION  
 1-800-892-0123  
 OR 811

PLAN AND CONTRACT TECHNICIAN  
 TIMOTHY SHARP (217)782-7743

CONTRACT NO. 72D80

GROSS LENGTH = 1,907.00 FT. = 0.361 MILE

STATE OF ILLINOIS  
 DEPARTMENT OF TRANSPORTATION  
 DIVISION OF HIGHWAYS

SUBMITTED July 8 2010  
Ray 2 Palko  
 DEPUTY DIRECTOR OF HIGHWAYS, REGION ENGINEER

August 13 2010  
Scott E. Stitt, P.E., J.E.  
 ENGINEER OF DESIGN AND ENVIRONMENT

August 13 2010  
Christine M. Reed, J.E.  
 DIRECTOR OF HIGHWAYS, CHIEF ENGINEER

PRINTED BY THE AUTHORITY  
 OF THE STATE OF ILLINOIS