

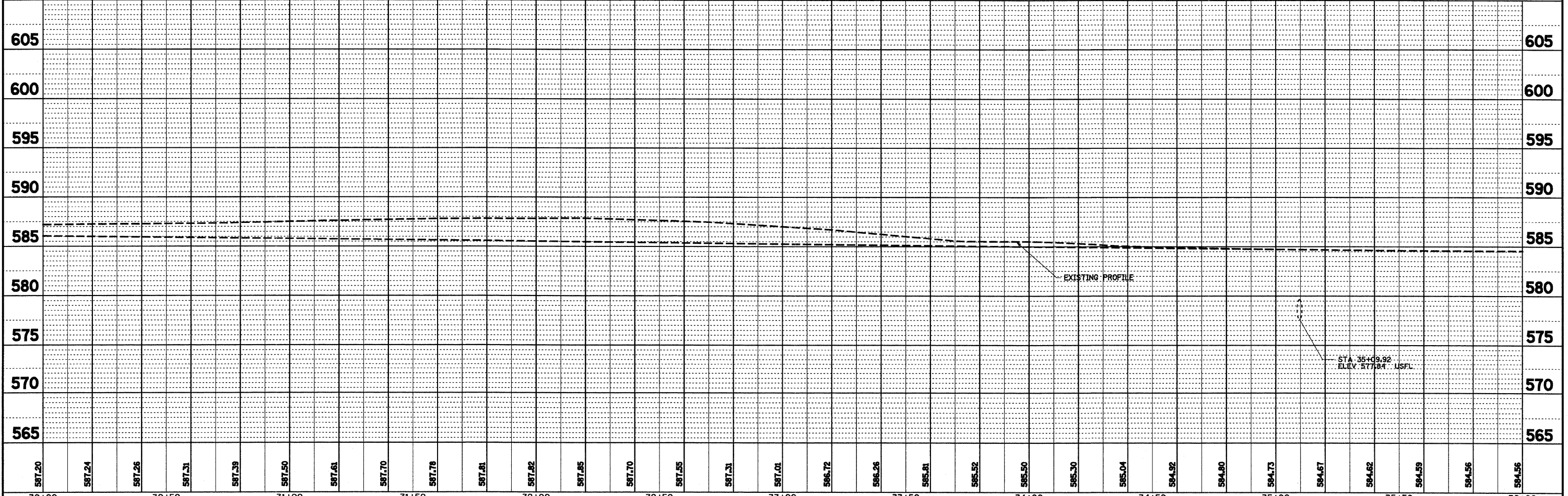
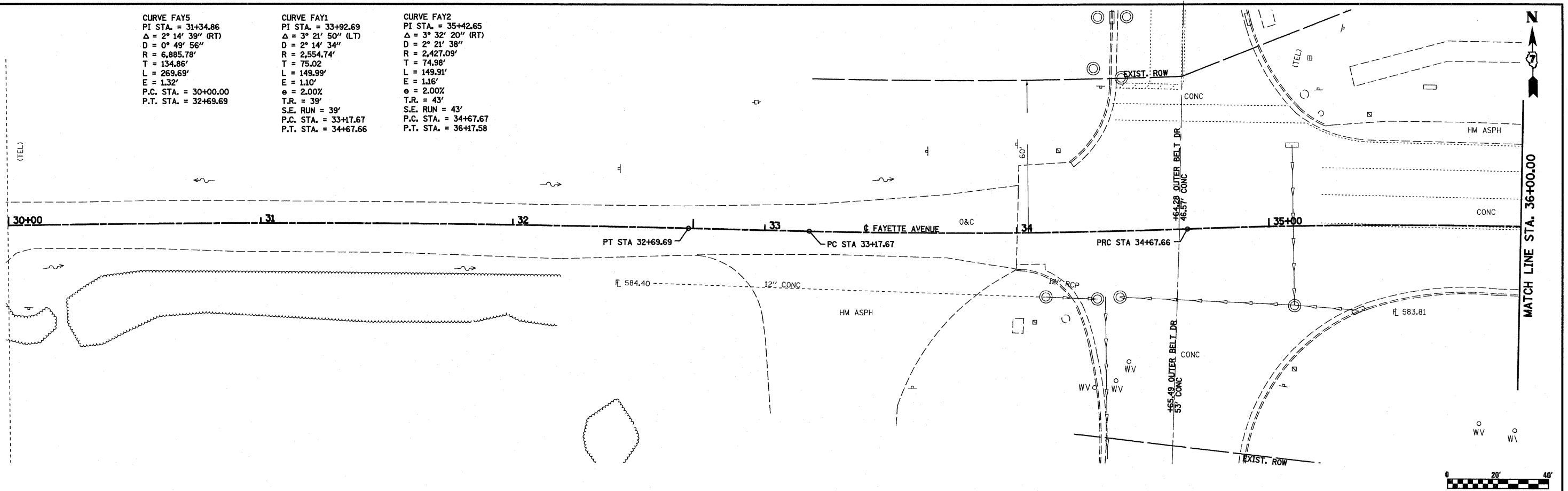
CURVE FAY5
 PI STA. = 31+34.86
 $\Delta = 2^\circ 14' 39''$ (RT)
 $D = 0^\circ 49' 56''$
 $R = 6,885.78'$
 $T = 134.86'$
 $L = 269.69'$
 $E = 1.32'$
 $\theta = 2.00\%$
 P.C. STA. = 30+00.00
 P.T. STA. = 32+69.69

CURVE FAY1
 PI STA. = 33+92.69
 $\Delta = 3^\circ 21' 50''$ (LT)
 $D = 2^\circ 14' 34''$
 $R = 2,554.74'$
 $T = 75.02$
 $L = 149.99'$
 $E = 1.10'$
 $\theta = 2.00\%$
 $T.R. = 39'$
 $S.E. RUN = 39'$
 P.C. STA. = 33+17.67
 P.T. STA. = 34+67.66

CURVE FAY2
 PI STA. = 35+42.65
 $\Delta = 3^\circ 32' 20''$ (RT)
 $D = 2^\circ 21' 38''$
 $R = 2,427.09'$
 $T = 74.98'$
 $L = 149.91'$
 $E = 1.16'$
 $\theta = 2.00\%$
 $T.R. = 43'$
 $S.E. RUN = 43'$
 P.C. STA. = 34+67.67
 P.T. STA. = 36+17.58

PLAN	REVIEWED	BY	DATE
NOTE BOOK NO.	PLOTTED		
	ALIGNMENT CHECKED		
	GRADES CHECKED		
	STRUCTURE NOTATIONS CHECKED		
	FILE NAME		

PRC	LE	REVIEWED	BY	DATE
NOTE BOOK NO.	PLOTTED			
	GRADES CHECKED			
	STRUCTURE NOTATIONS CHECKED			



FILE NAME =	USER NAME = paul	DESIGNED - JWS	REVISED -
S:\Projects\403-00072-57-70\dgn\Fayette\pp_20_FAY.dgn		DRAWN - PDB	REVISED -
		CHECKED - BRM	REVISED -
		DATE - 11-16-07	REVISED -

STATE OF ILLINOIS
 DEPARTMENT OF TRANSPORTATION

PLAN AND PROFILE, FAYETTE AVENUE

SCALE: 1"=20' SHEET NO. 1 OF 8 SHEETS STA. 32+71.37 TO STA. 36+00.00

F.A.I. RTE.	SECTION	COUNTY	TOTAL SHEETS	SHEET NO.
57/70	(25-3)I-6	EFFINGHAM	839	42
FED. ROAD DIST. NO.			ILLINOIS FED. AID PROJECT	
CONTRACT NO. 74293				