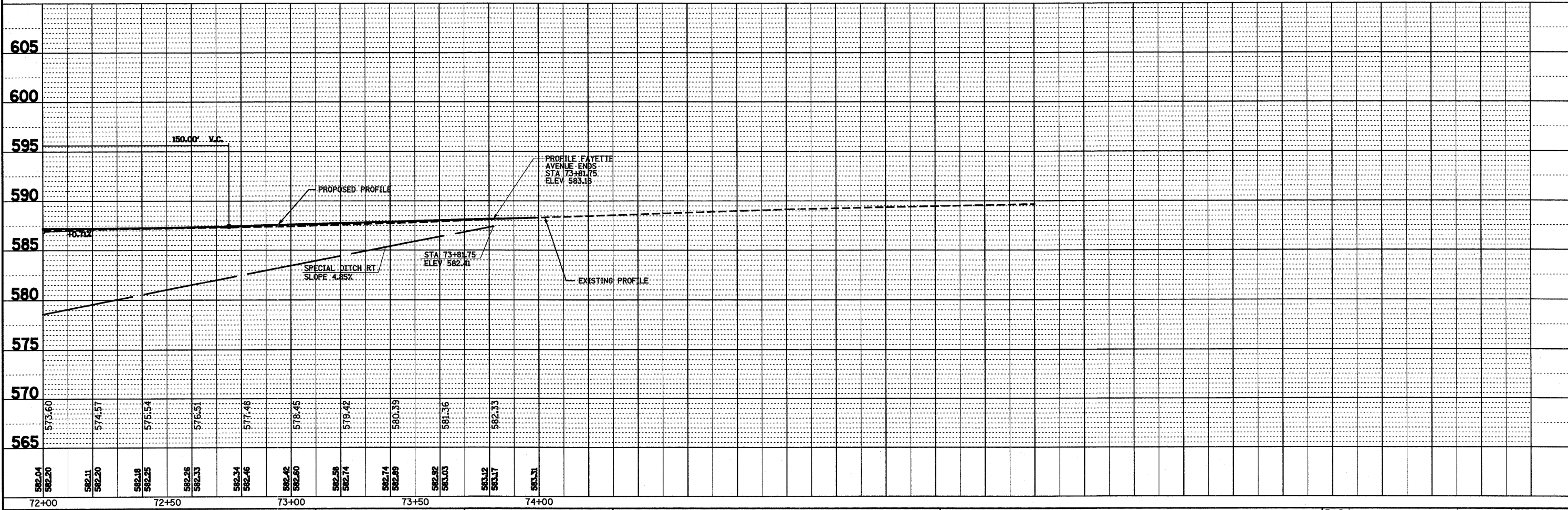
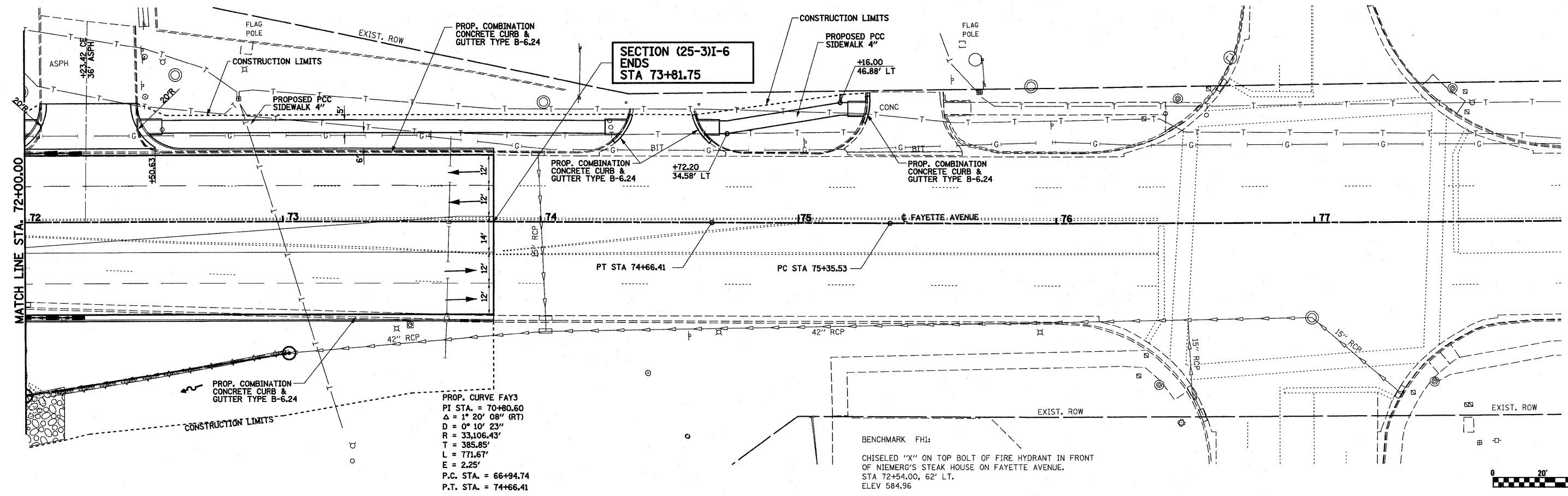


PLAN	REVISIONS	DATE
NO.	NO.	BY
NO.	NO.	DATE
NO.	NO.	DATE
NO.	NO.	DATE

PRC	E	REVISIONS	DATE
NO.	NO.	NO.	BY
NO.	NO.	NO.	DATE
NO.	NO.	NO.	DATE
NO.	NO.	NO.	DATE



FILE NAME = S:\Projects\403-00072-57-70\dgn\Fayette\pp_20_FAT.dgn	USER NAME = paul	DESIGNED - JWS	REVISED -	STATE OF ILLINOIS DEPARTMENT OF TRANSPORTATION	PLAN AND PROFILE, FAYETTE AVENUE	F.A.I. RTE. 57/70	SECTION (25-3)I-6	COUNTY EFFINGHAM	TOTAL SHEETS 839	SHEET NO. 49	
PLOT SCALE = 40.0000' / IN.	DATE = 6/23/2010	DRAWN - PDB	REVISED -			SCALE: 1"=20'	SHEET NO. 8 OF 8 SHEETS	STA. 72+00.00 TO STA. 73+81.75	CONTRACT NO. 74293		
CHECKED - BRM		DATE - 11-16-07	REVISED -			FED. ROAD DIST. NO. ILLINOIS FED. AID PROJECT					