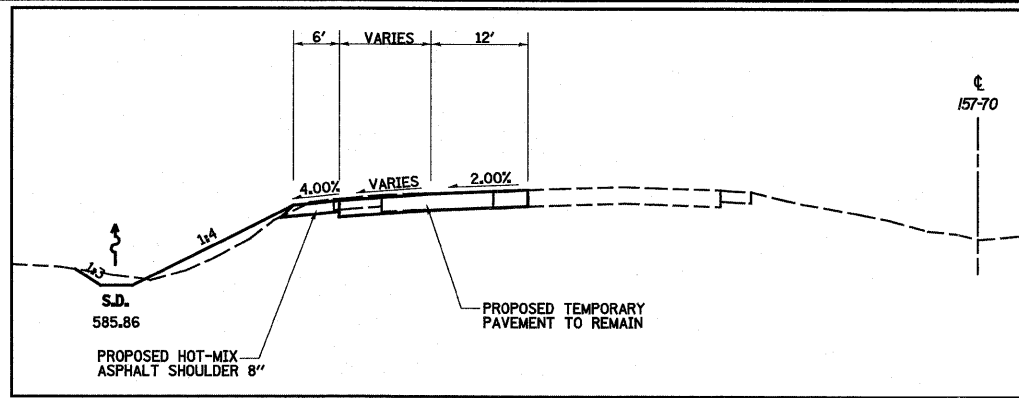
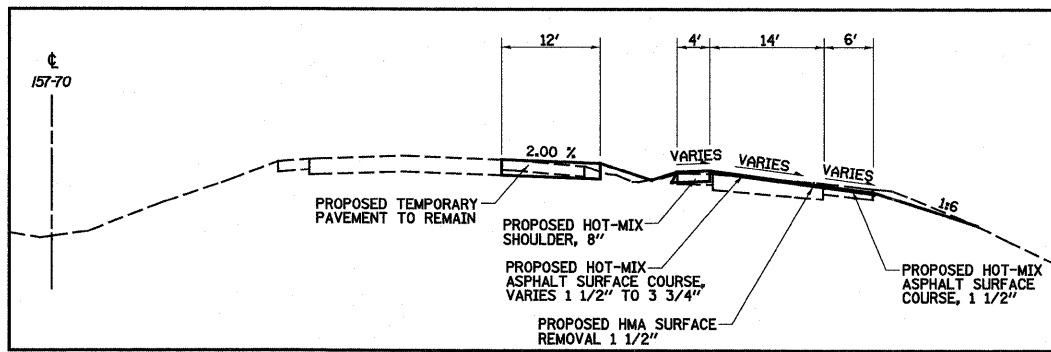
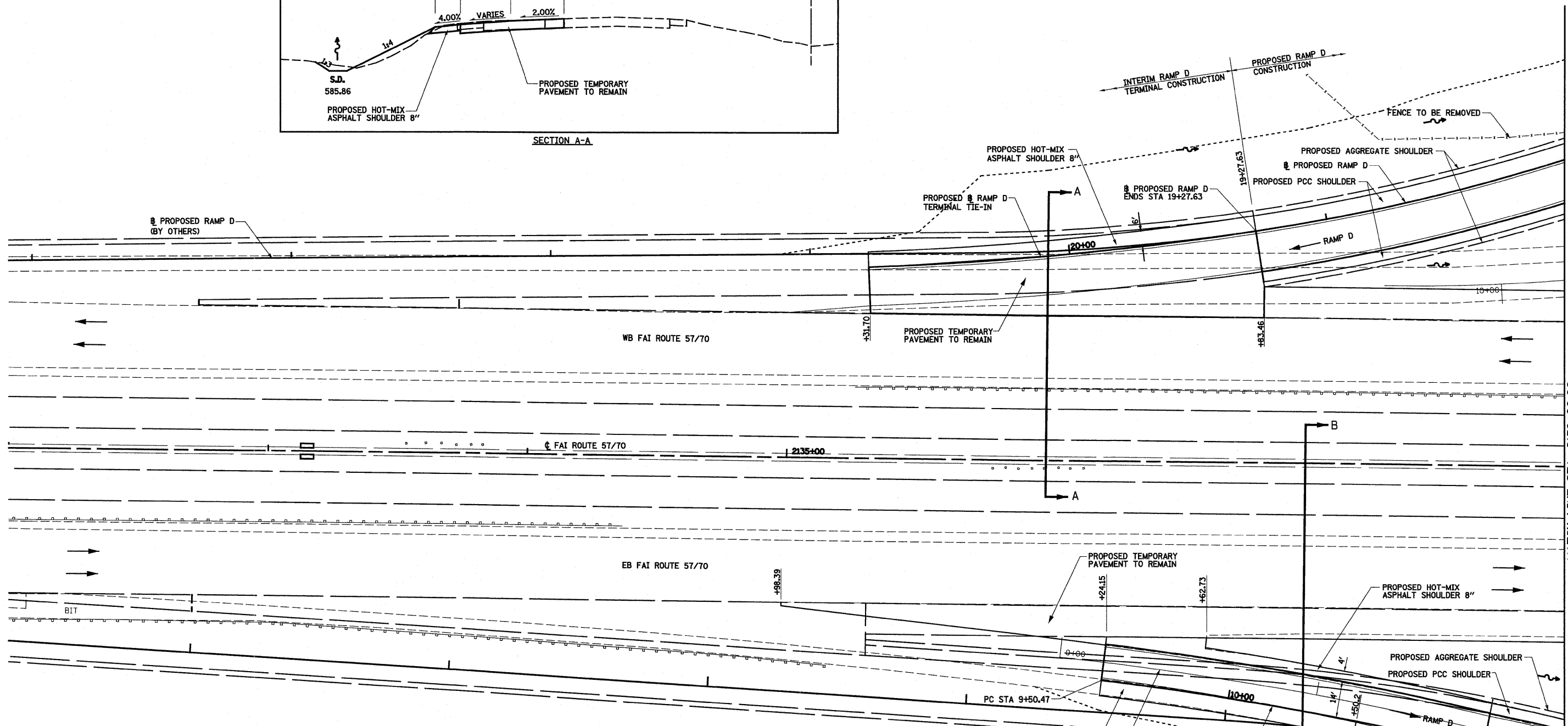


NOTE: PROPOSED RAMP TERMINALS FOR THIS PROJECT ARE INTERIM. PERMANENT RAMP TERMINALS TO BE CONSTRUCTED BY OTHERS.

NOTE: STATIONING OF RAMP D IS REVERSED



SECTION A-A



SECTION B-B

FILE NAME =	USER NAME = paul
SA\Projects\403-00072-57-70\Drawings\Figures\FP_20_5770.dwg	
PLOT SCALE = 40.0000' / IN.	
PLOT DATE = 6/24/2010	

DESIGNED - JWS	REVISED -
DRAWN - PDB	REVISED -
CHECKED - BRM	REVISED -
DATE - 11-16-07	REVISED -

**STATE OF ILLINOIS
DEPARTMENT OF TRANSPORTATION**

PLAN SHEET, FAI ROUTES 57/70

SCALE: 1"=20' SHEET NO. 1 OF 8 SHEETS STA. 2135+20.87 TO STA. 2138+00.00

F.A.I. RTE. 57/70	SECTION (25-3)I-6	COUNTY EFFINGHAM	TOTAL SHEETS 839	SHEET NO. 50
CONTRACT NO. 74293				
FED. ROAD DIST. NO. ILLINOIS FED. AID PROJECT				

