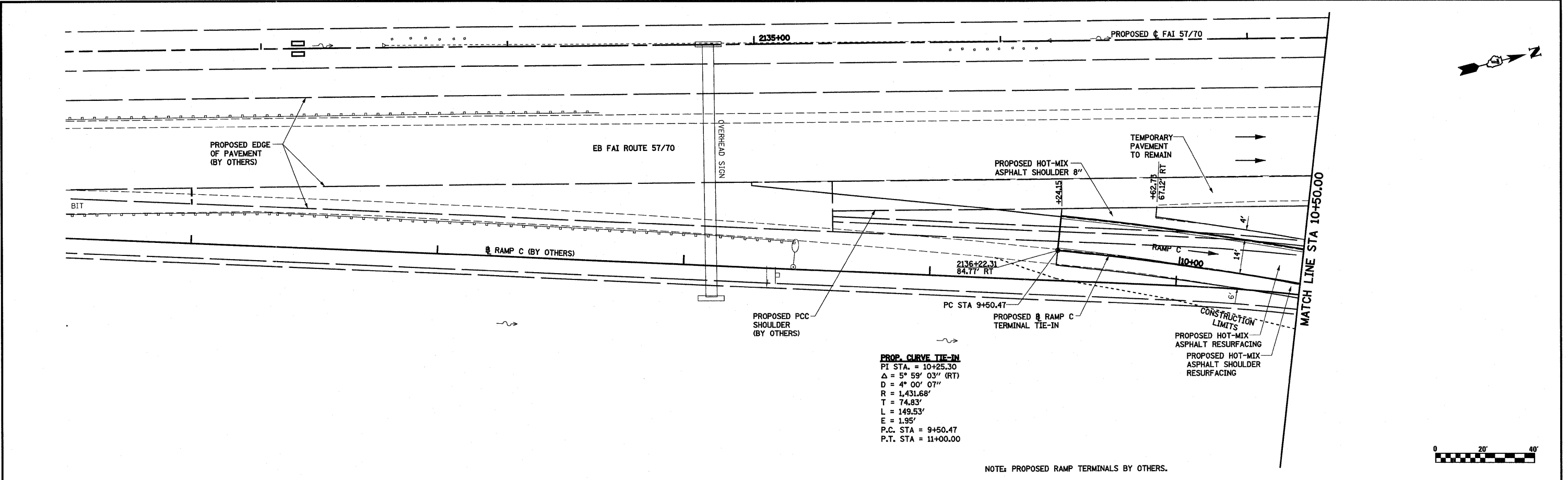


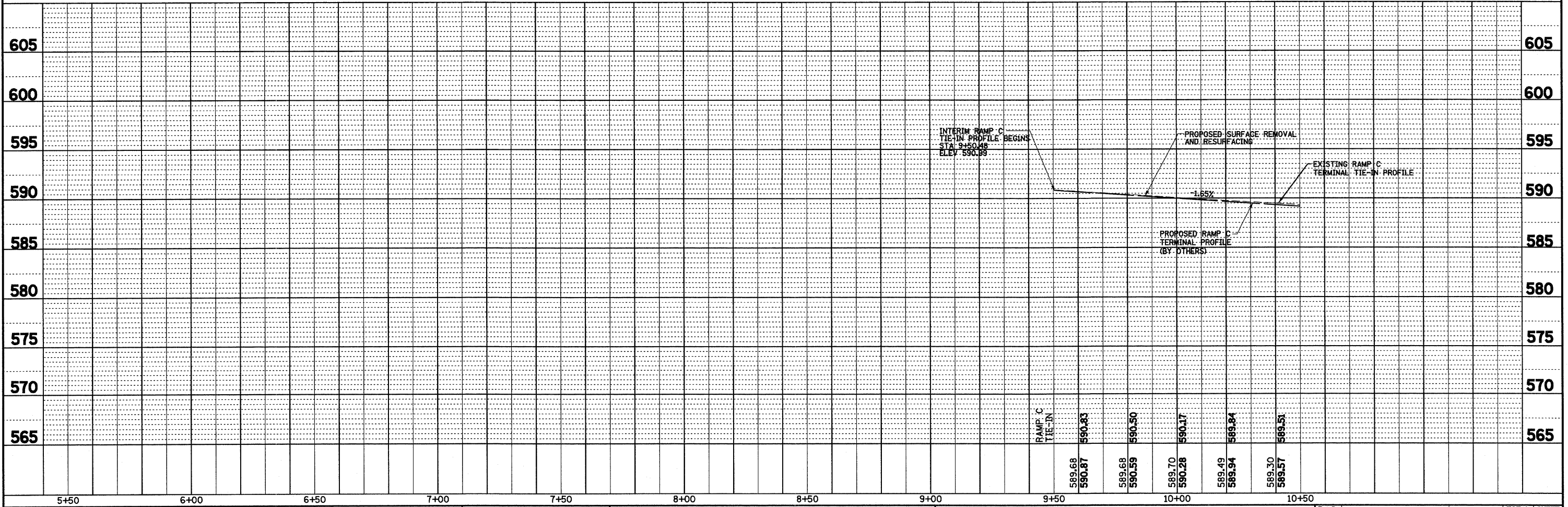
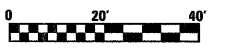
PLAN  
 REVISIONS  
 NO. DATE  
 CHECKED  
 DATE  
 DRAWN  
 DATE

PROFILE  
 REVISIONS  
 NO. DATE  
 CHECKED  
 DATE  
 DRAWN  
 DATE



**PROP. CURVE TIE-IN**  
 PI STA. = 10+25.30  
 $\Delta = 5^\circ 59' 03''$  (RT)  
 $D = 4^\circ 00' 07''$   
 $R = 1,431.68'$   
 $T = 74.83'$   
 $L = 149.53'$   
 $E = 1.95'$   
 P.C. STA = 9+50.47  
 P.T. STA = 11+00.00

NOTE: PROPOSED RAMP TERMINALS BY OTHERS.



FILE NAME =	USER NAME = paul	DESIGNED - JWS	REVISED -	<b>STATE OF ILLINOIS DEPARTMENT OF TRANSPORTATION</b>	<b>PLAN AND PROFILE, RAMP C, FAYETTE AVENUE</b>	F.A.I. RTE. 57/70	SECTION (25-3)I-6	COUNTY EFFINGHAM	TOTAL SHEETS 839	SHEET NO. 65		
S:\Projects\403-00072-57-70\dgn\Fayette11pp_20_Ramps.dgn	PLOT SCALE = 40.0000' / IN.	DRAWN - PDB	REVISED -			SCALE: 1"=20'		SHEET NO. 8 OF 12 SHEETS		STA. 5+50.00 TO STA. 10+50.00		CONTRACT NO. 74293
	PLOT DATE = 6/24/2010	CHECKED - BRM	REVISED -			FED. ROAD DIST. NO.		ILLINOIS FED. AID PROJECT				
		DATE - 11-16-07	REVISED -									