



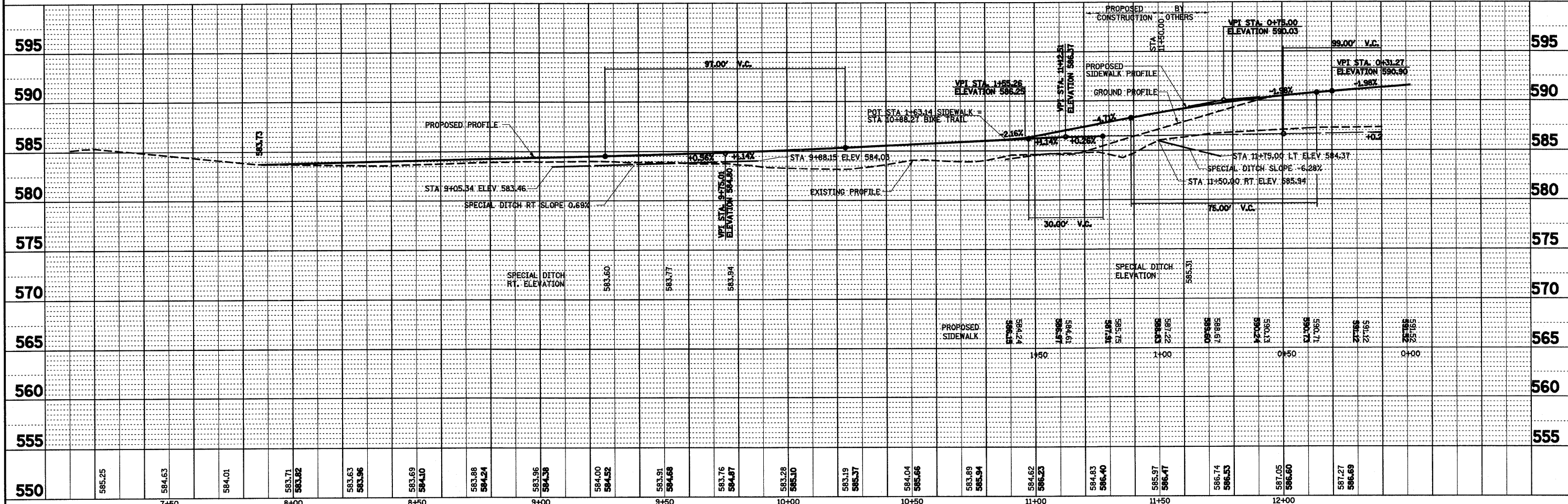
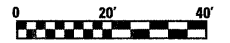
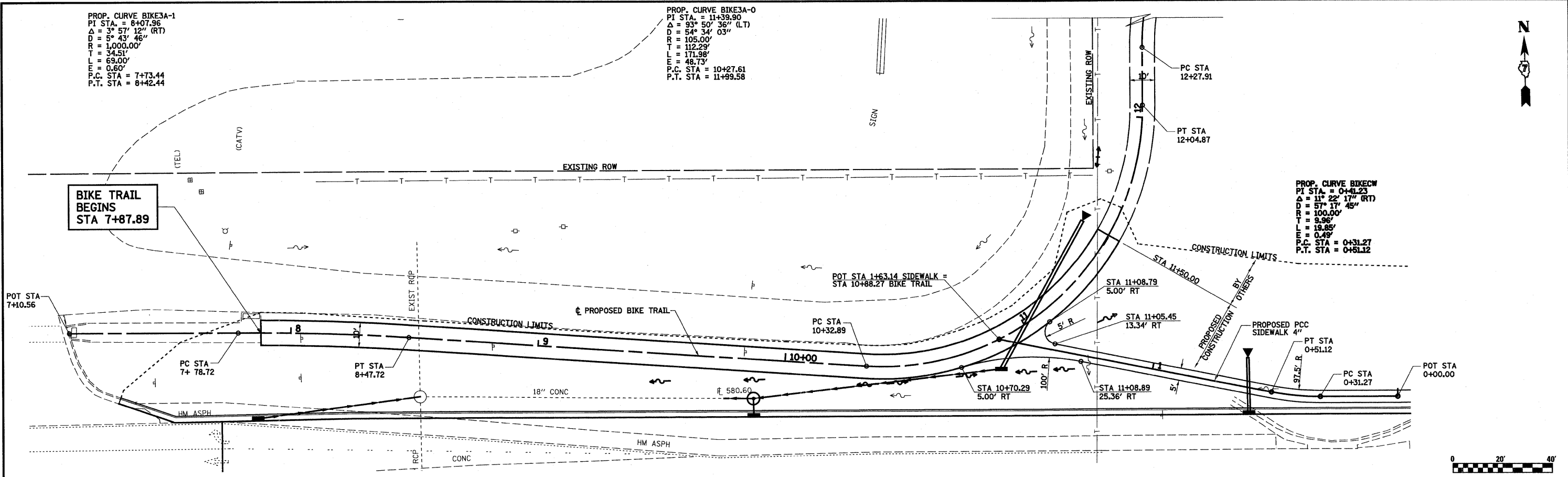
PROP. CURVE BIKE3A-1
 PI STA. = 8+07.96
 $\Delta = 3^\circ 57' 12''$ (RT)
 $D = 5^\circ 53' 46''$
 $R = 1,000.00'$
 $T = 34.51'$
 $L = 69.00'$
 $E = 0.60'$
 P.C. STA = 7+73.44
 P.T. STA = 8+42.44

PROP. CURVE BIKE3A-0
 PI STA. = 11+39.90
 $\Delta = 93^\circ 50' 36''$ (LT)
 $D = 54^\circ 34' 03''$
 $R = 105.00'$
 $T = 112.29'$
 $L = 171.98'$
 $E = 48.73'$
 P.C. STA = 10+27.61
 P.T. STA = 11+99.58

PROP. CURVE BIKECW
 PI STA. = 0+41.23
 $\Delta = 11^\circ 22' 17''$ (RT)
 $D = 57^\circ 17' 45''$
 $R = 100.00'$
 $T = 9.96'$
 $L = 19.85'$
 $E = 0.49'$
 P.C. STA = 0+31.27
 P.T. STA = 0+51.12

DATE	
BY	
REVIEWED	
PLANNED	
NOTE BOOK	
NO.	
NO.	
NO.	
NO.	

DATE	
BY	
REVIEWED	
PLANNED	
NOTE BOOK	
NO.	
NO.	
NO.	
NO.	



FILE NAME =	USER NAME = paul	DESIGNED - JWS	REVISED -	STATE OF ILLINOIS DEPARTMENT OF TRANSPORTATION	PLAN AND PROFILE, BIKE TRAIL			F.A.I. RTE.	SECTION	COUNTY	TOTAL SHEETS	SHEET NO.
S:\Projects\403-00072-57-10\dgn\Fyette\PP_20.Bike Trail.dgn		DRAWN - PDB	REVISED -		SCALE: 1"=20'	SHEET NO. 1 OF 4 SHEETS	STA. 7+82.60 TO STA. 12+30.00	57/70	(25-3)I-6	EFFINGHAM	839	71
PLOT SCALE = 40.00000 / IN.		CHECKED - BRM	REVISED -		CONTRACT NO. 74293							
PLOT DATE = 6/24/2010		DATE - 11-25-09	REVISED -		FED. ROAD DIST. NO. ILLINOIS FED. AID PROJECT							