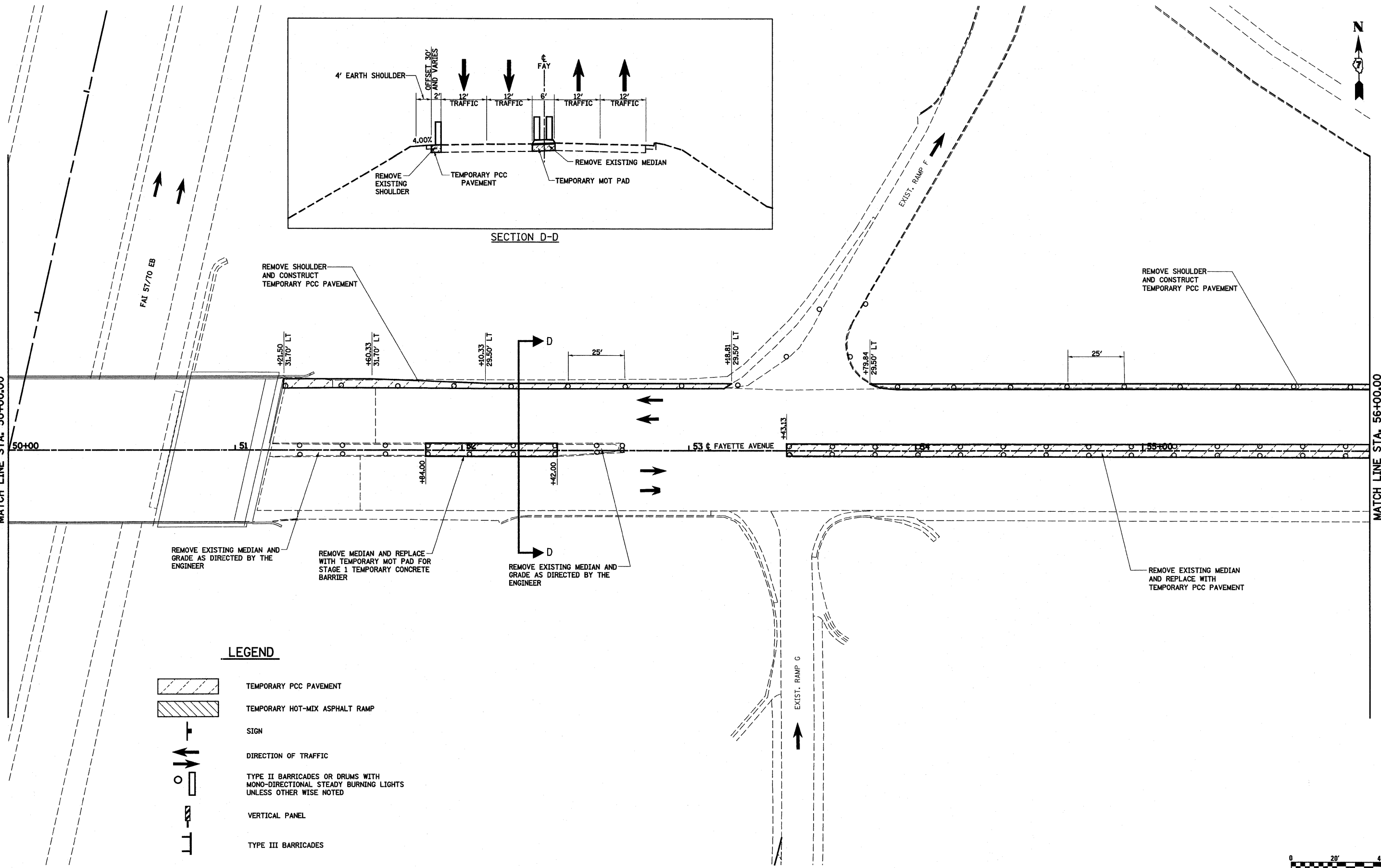


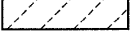
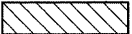





SECTION D-D

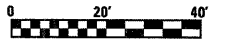
MATCH LINE STA. 50+00.00

MATCH LINE STA. 56+00.00



LEGEND

-  TEMPORARY PCC PAVEMENT
-  TEMPORARY HOT-MIX ASPHALT RAMP
-  SIGN
-  DIRECTION OF TRAFFIC
-  TYPE II BARRICADES OR DRUMS WITH MONO-DIRECTIONAL STEADY BURNING LIGHTS UNLESS OTHER WISE NOTED
-  VERTICAL PANEL
-  TYPE III BARRICADES



FILE NAME =	USER NAME = paul	DESIGNED - JWS	REVISED -	STATE OF ILLINOIS DEPARTMENT OF TRANSPORTATION	MAINTENANCE OF TRAFFIC, PRE-STAGE 1, FAYETTE AVENUE	F.A.I. RTE.	SECTION	COUNTY	TOTAL SHEETS	SHEET NO.	
S:\Projects\403-00072-57-70\paul\Fayette\UnoFay_PS.dwg	PLOT SCALE = 40.0000' / IN.	DRAWN - PDB	REVISED -			57/70	(25-3)I-6	EFFINGHAM	839	80	
PLOT DATE = 6/24/2010	DATE - 11-5-07	CHECKED - BRM	REVISED -			SCALE: 1"=20'		SHEET NO. 5 OF 15 SHEETS		STA. 50+00.00 TO STA. 56+00.00	
		DATE - 11-5-07	REVISED -			FED. ROAD DIST. NO.		ILLINOIS FED. AID PROJECT		CONTRACT NO. 74293	