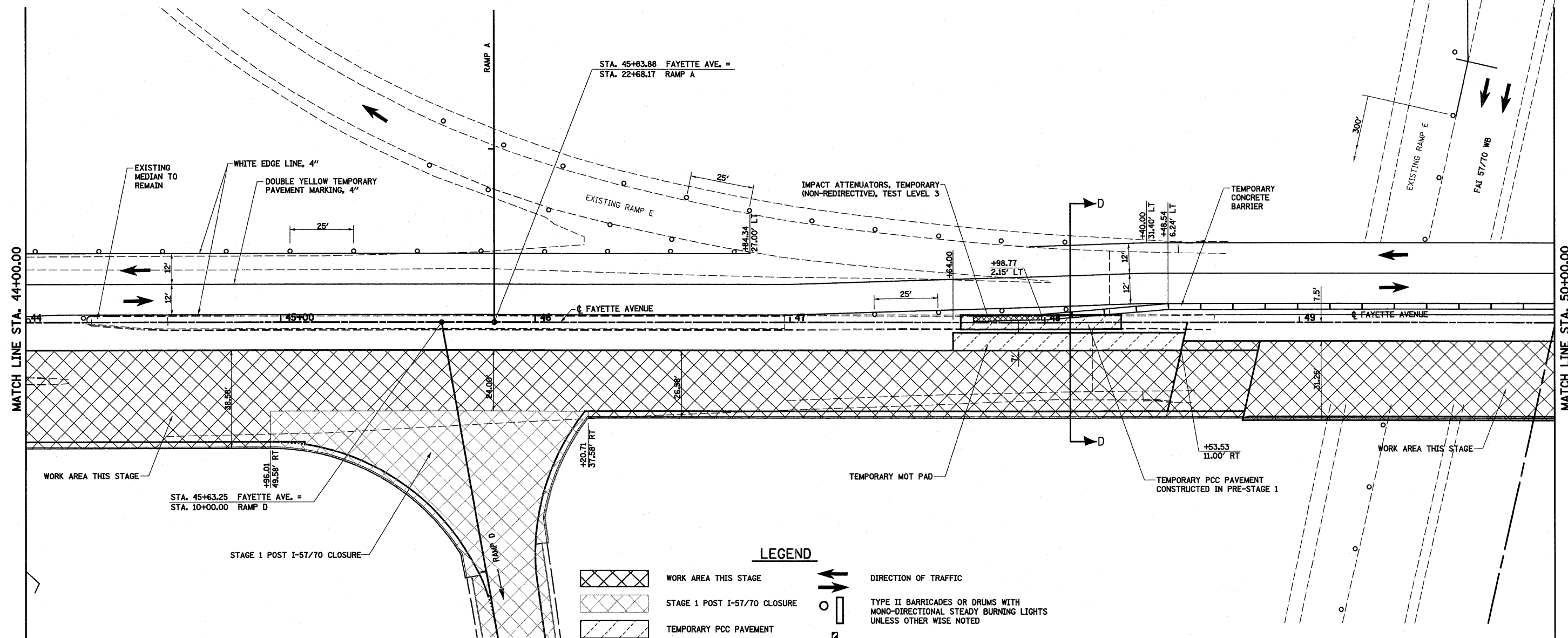
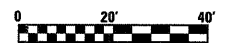


SECTION D-D



LEGEND

- WORK AREA THIS STAGE
- STAGE 1 POST I-57/70 CLOSURE
- TEMPORARY PCC PAVEMENT
- TEMPORARY HOT-MIX ASPHALT RAMP
- SIGN
- DIRECTION OF TRAFFIC
- TYPE II BARRICADES OR DRUMS WITH MONO-DIRECTIONAL STEADY BURNING LIGHTS UNLESS OTHERWISE NOTED
- VERTICAL PANEL
- TYPE III BARRICADES



FILE NAME =	USER NAME = paul	DESIGNED - JWS	REVISED -	STATE OF ILLINOIS DEPARTMENT OF TRANSPORTATION	MAINTENANCE OF TRAFFIC, STAGE 1, FAYETTE AVENUE	F.A.I. RTE.	SECTION	COUNTY	TOTAL SHEETS	SHEET NO.	
S:\Projects\403-00072-57-70\paul\Fayette\mofFay-S1.dwg		DRAWN - PDB	REVISED -			57/70	(25-3)I-6	EFFINGHAM	839	96	
PLOT SCALE = 40,0000' / IN.		CHECKED - BRM	REVISED -			SCALE: 1"=20'		SHEET NO. 6 OF 21 SHEETS		STA. 44+00.00 TO STA. 50+00.00	
PLOT DATE = 6/25/2010		DATE - 11-16-07	REVISED -			CONTRACT NO. 74293		FED. ROAD DIST. NO. ILLINOIS FED. AID PROJECT			