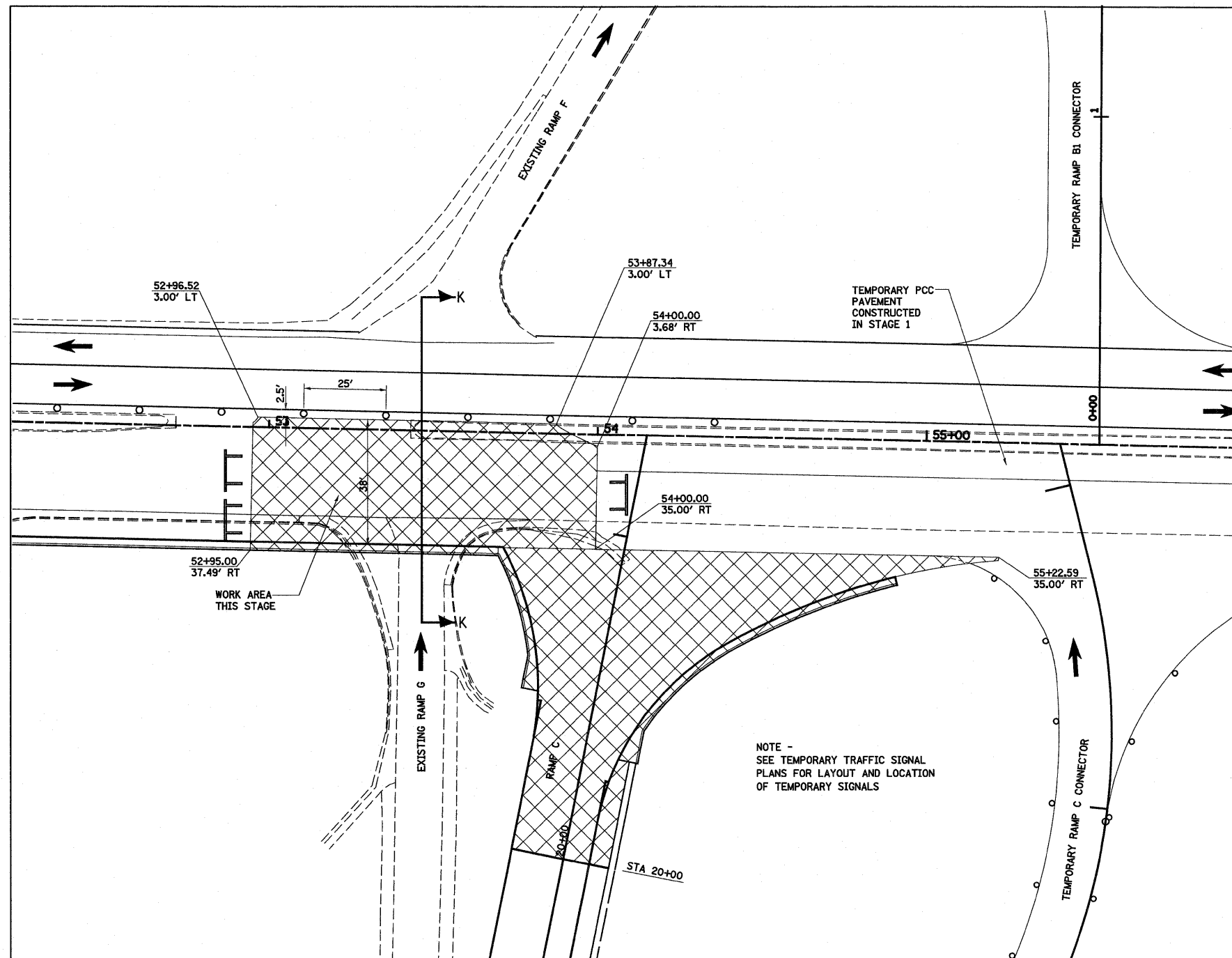
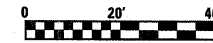


SECTION K-K



DETAIL B
STAGE 1B

LEGEND	
	WORK AREA THIS STAGE
	STAGE 1 POST I-57/70 CLOSURE
	TEMPORARY PCC PAVEMENT
	TEMPORARY HOT-MIX ASPHALT RAMP
	SIGN
	DIRECTION OF TRAFFIC
	TYPE II BARRICADES OR DRUMS WITH MONO-DIRECTIONAL STEADY BURNING LIGHTS UNLESS OTHERWISE NOTED
	VERTICAL PANEL
	TYPE III BARRICADES



FILE NAME = S:\Projects\403-00072.57-70\dgn\Fayette\motFay.S1.dgn	USER NAME = paul	DESIGNED - JWS	REVISED -	STATE OF ILLINOIS DEPARTMENT OF TRANSPORTATION	MAINTENANCE OF TRAFFIC, STAGE 1B, FAYETTE AVENUE	F.A.T. RTE. 57/70	SECTION (25-3)I-6	COUNTY EFFINGHAM	TOTAL SHEETS 839	SHEET NO. 98		
PLOT SCALE = 48.0000' / IN.	DATE = 6/25/2010	DRAWN - PDB	REVISED -			SCALE: 1"=20'	SHEET NO. 8 OF 21 SHEETS	STA. 50+00.00 TO STA. 56+00.00	CONTRACT NO. 74293			
CHECKED - BRM	DATE - 11-16-07	REVISOR -	REVISED -			FED. ROAD DIST. NO. ILLINOIS FED. AID PROJECT						
REVISOR -	REVISED -											