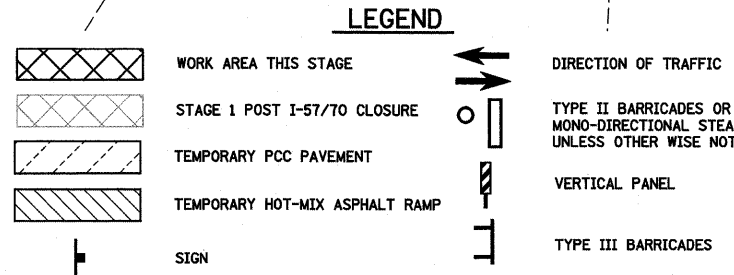


SECTION (25-3)I-6  
ENDS  
STA 73+81.75

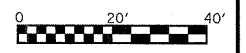
NOTE:  
ENTRANCE AT STATION 70+23.20 IS  
TO BE CONSTRUCTED IN HALF-WIDTH  
AS DIRECTED BY THE ENGINEER.  
SEE SPECIAL PROVISIONS.

W1-6R(0)-6030  
(ABOVE TYPE III BARRICADE)

NOTE:  
SEE TEMPORARY TRAFFIC SIGNAL  
PLANS FOR LAYOUT AND LOCATION  
OF TEMPORARY SIGNALS



NOTE:  
ADJUSTMENTS TO THE LAYOUT OF DRUMS AND/OR BARRICADES MAY BE REQUIRED IN THE  
INTERSECTION PROPER AS DIRECTED BY THE ENGINEER. THESE ADJUSTMENTS MAY BE NECESSARY  
IN ORDER TO FACILITATE TRAFFIC MOVEMENTS WHEN ACTUAL CONSTRUCTION OPERATIONS ARE  
NOT BEING PERFORMED.  
WHEN PAVEMENT REMOVAL AND/OR EXCAVATION OPERATIONS ARE ONGOING, IT MAY ALSO BE  
NECESSARY TO MAKE ADJUSTMENTS TO THE DRUMS AND BARRICADES AND PLACE AGGREGATE IN  
DROP OFF AREAS IN THE WORK ZONE FOR TRAFFIC MOVEMENTS DURING NON-WORKING HOURS.



FILE NAME =	USER NAME = paul	DESIGNED - JWS	REVISED -	<b>STATE OF ILLINOIS DEPARTMENT OF TRANSPORTATION</b>	<b>MAINTENANCE OF TRAFFIC, STAGE 1, FAYETTE AVENUE</b>	F.A.I. RTE.	SECTION	COUNTY	TOTAL SHEETS	SHEET NO.
S:\Projects\403-00072-57-70\dgn\Fayette	mo\Fay_S1.dgn	DRAWN - PDB	REVISED -			57/70	(25-3)I-6	EFFINGHAM	839	101
PLOT SCALE = 40,0000' / IN.		CHECKED - BRM	REVISED -			<b>CONTRACT NO. 74293</b>				
PLOT DATE = 6/28/2010		DATE - 11-16-07	REVISED -			FED. ROAD DIST. NO. ILLINOIS FED. AID PROJECT				
				SCALE: 1"=20'		SHEET NO. 11 OF 21 SHEETS		STA. 68+00.00 TO STA. 74+00.00		