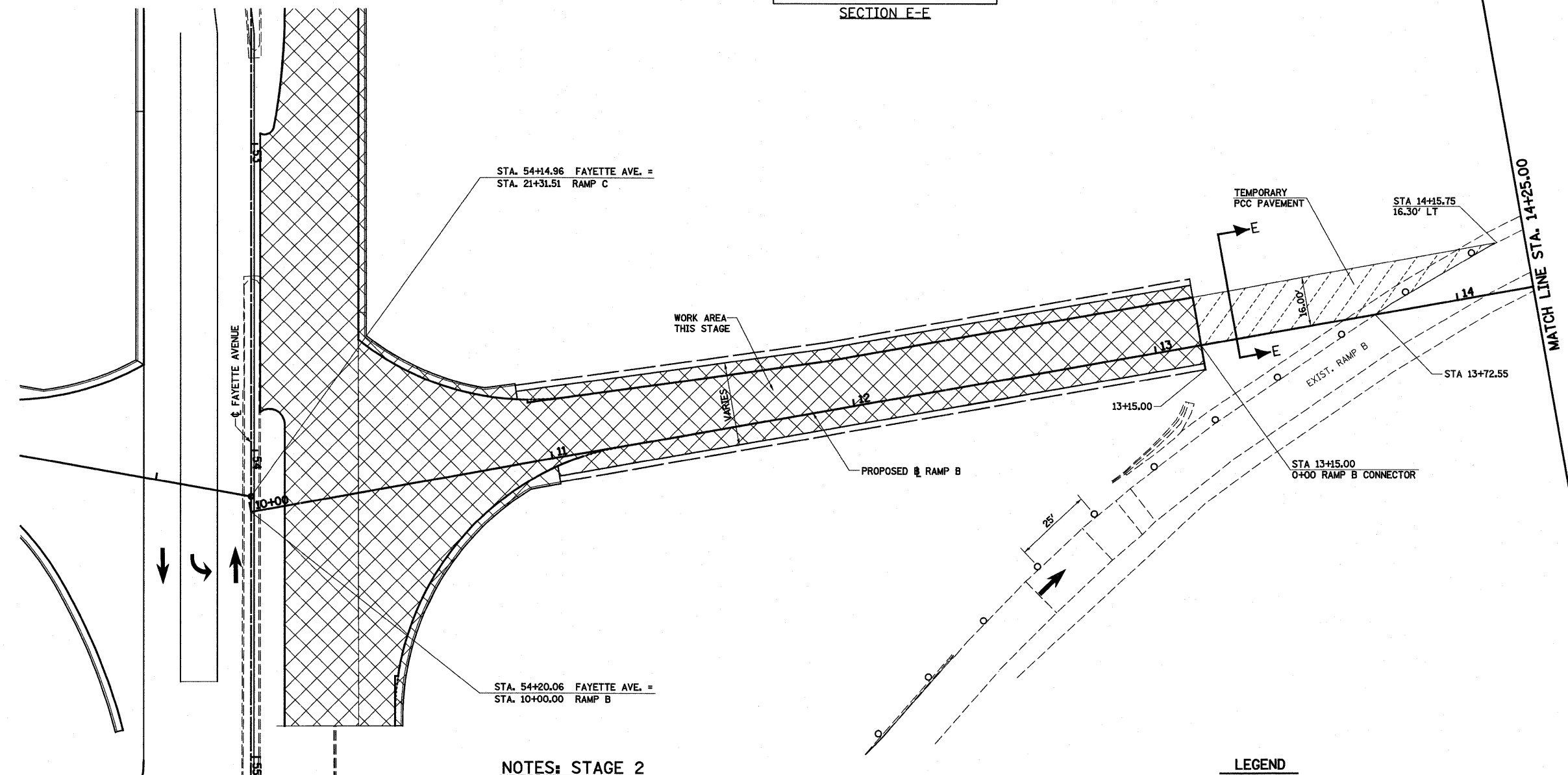
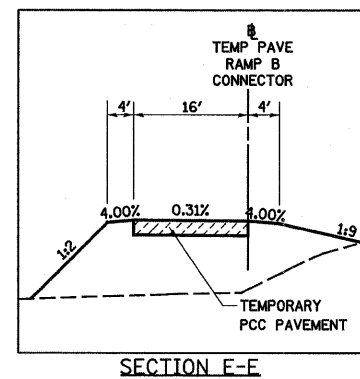




TEMPORARY RAMP B CONNECTOR

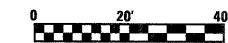
DESCRIPTION	COORDINATE	
	NORTHING	EASTING
POT STA 0+00.00	893963.83	917878.29
POT STA 0+57.55	894020.70	917869.44



- NOTES: STAGE 2**
1. MAINTAIN TRAFFIC ON EXISTING RAMP B
 2. CONSTRUCT NEW RAMP B FROM FAYETTE AVENUE TO STATION 13+15.00. CONSTRUCT TEMPORARY RAMP B CONNECTOR FROM PROPOSED RAMP B TO EXISTING RAMP B.

LEGEND

	WORK AREA THIS STAGE		DIRECTION OF TRAFFIC
	TEMPORARY PCC PAVEMENT		TYPE II BARRICADES OR DRUMS WITH MONO-DIRECTIONAL STEADY BURNING LIGHTS UNLESS OTHERWISE NOTED
	TEMPORARY HOT-MIX ASPHALT RAMP		VERTICAL PANEL
	SIGN		TYPE III BARRICADES
	BY OTHERS		



FILE NAME =	USER NAME = paul	DESIGNED - JWS	REVISED -	STATE OF ILLINOIS DEPARTMENT OF TRANSPORTATION	MAINTENANCE OF TRAFFIC, STAGE 2, RAMP B, FAYETTE AVENUE	F.A.I. RTE.	SECTION	COUNTY	TOTAL SHEETS	SHEET NO.	
St:\Projects\403-00072-51-70\dgn\Fayette\NoRamps_S2.dgn		DRAWN - PDB	REVISED -			57/70	(25-3)-6	EFFINGHAM	839	130	
PLOT SCALE = 40,0000' / IN.		CHECKED - BRM	REVISED -			SCALE: 1"=20'		SHEET NO. 17 OF 19 SHEETS		STA. 10+00.00 TO STA. 14+25.00	
PLOT DATE = 6/24/2010		DATE - 11-16-07	REVISED -			FED. ROAD DIST. NO.		ILLINOIS FED. AID PROJECT		CONTRACT NO. 74293	