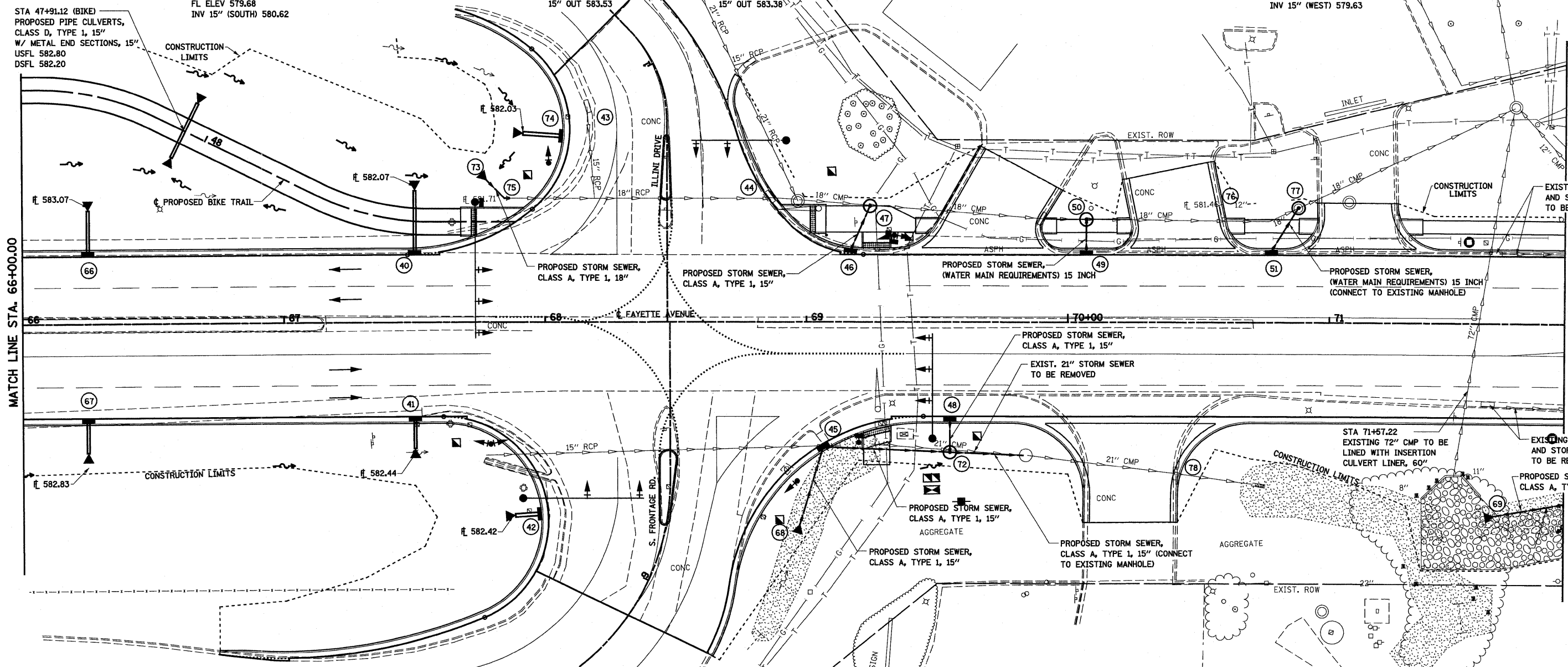


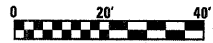
- 40 STA 67+50.00, 27.69' LT PROPOSED INLETS, TYPE A W/ TYPE 3 FRAME AND GRATE PIPE DRAINS, 15" METAL END SECTIONS, 15" GR ELEV 585.03 FL ELEV 582.70 15" OUT 582.87
- 41 STA 67+50.00, 37.69' RT PROPOSED INLETS, TYPE A W/ TYPE 3 FRAME AND GRATE PIPE DRAINS, 15" METAL END SECTIONS, 15" GR ELEV 585.03 FL ELEV 582.70 15" OUT 582.87
- 42 STA 9+11.59 (S. FRONTAGE), 47.98' LT PROPOSED INLETS, TYPE A W/ TYPE 15 FRAME AND LID PIPE DRAINS, 15" METAL END SECTIONS, 15" LID ELEV 584.85 GR ELEV 583.95 FL ELEV 582.85 15" OUT 583.02
- 43 STA 0+90.87 (ILLINOI), 29.47' LT EXISTING INLETS TO BE ADJUSTED GR ELEV 584.14 PR GR ELEV 584.04 EX FL ELEV 581.77 EX
- 44 STA 68+85.80, 47.90' LT EXISTING INLET TO BE ADJUSTED GR ELEV 584.80 FL ELEV 580.74 (EXIST)
- 45 STA 69+06.68, 48.26' RT PROPOSED INLETS, TYPE B W/ FLAT TOP SLAB AND TYPE 3 FRAME AND GRATE (CONNECT TO EXISTING 15" STORM SEWER) GR ELEV 583.84 FL ELEV 580.00 INV 15" (EXIST) 580.51 INV 15" (SOUTH) 580.17 15" OUT 580.17
- 46 STA 69+16.80, 27.69' LT PROPOSED INLETS, TYPE A W/ TYPE 3V FRAME AND GRATE GR ELEV 583.92 FL ELEV 581.59 15" OUT 581.76
- 47 STA 69+24.30, 44.50' LT PROPOSED MANHOLES TYPE A, 4' DIA W/ TYPE 1 FRAME AND CLOSED LID (CONNECT TO EXISTING 18" STORM SEWER) GR ELEV 585.00 FL ELEV 580.60 INV 15" (SOUTH) 580.80
- 48 STA 69+55.00, 37.69' RT PROPOSED INLETS, TYPE A, W/ TYPE 3V FRAME AND GRATE GR ELEV 583.56 FL ELEV 581.23 15" OUT 581.40

- 49 STA 70+07.00, 27.69' LT PROPOSED INLETS, TYPE A W/ TYPE 3V FRAME AND GRATE GR ELEV 583.07 FL ELEV 580.74 15" OUT 580.91
- 50 STA 70+07.00, 39.56' LT PROPOSED MANHOLES, TYPE A, 4' DIA W/ TYPE 1 FRAME, CLOSED LID (CONNECT TO EXISTING 18" STORM SEWER) GR ELEV 583.82 FL ELEV 579.68 INV 15" (SOUTH) 580.62
- 51 STA 70+78.80, 27.69' LT PROPOSED INLETS, TYPE A, W/ TYPE 3V FRAME AND GRATE GR ELEV 582.39 FL ELEV 580.06 15" OUT 580.23
- 66 STA 66+25.00, 27.69' LT PROPOSED INLETS, TYPE A W/ TYPE 3 FRAME AND GRATE PIPE DRAINS, 15" METAL END SECTIONS, 15" GR ELEV 585.69 FL ELEV 583.36 15" OUT 583.53
- 67 STA 66+25.00, 37.69' RT PROPOSED INLETS, TYPE A W/ TYPE 3 FRAME AND GRATE PIPE DRAINS, 15" METAL END SECTIONS, 15" GR ELEV 585.54 FL ELEV 583.21 15" OUT 583.38
- 68 STA 68+97.50, 77.25' RT PROPOSED PRECAST REINFORCED CONCRETE FLARED END SECTION, 15" FL ELEV 582.70
- 69 STA 71+63.50, 73.70' RT PROPOSED PRECAST REINFORCED CONCRETE FLARED END SECTION, 42" FL ELEV 568.00
- 72 STA 69+54.83, 49.79' RT PROPOSED MANHOLES TYPE A, 4' DIA W/ TYPE 1 FRAME AND CLOSED LID GR ELEV 584.05 FL ELEV 579.63 INV 15" (NORTH) 583.08 INV 15" (WEST) 579.63
- 73 STA 67+78.00, 54.23' LT REMOVE AND RELAY EXISTING 18" END SECTION FL ELEV 581.75



- 74 STA 0+71.43 (ILLINOI), 40.55' LT PROPOSED INLETS, TYPE A W/ TYPE 15 FRAME AND LID PIPE DRAINS, 15" METAL END SECTIONS, 15" LID ELEV 584.34 GR ELEV 583.44 FL ELEV 582.34 15" OUT 582.51
- 75 STA 67+84.60, 47.58' LT PROPOSED REINFORCED CONCRETE PIPE ELBOW, 18", 45°
- 76 STA 70+58.89, 42.80' LT EXISTING INLET TO BE ADJUSTED GR ELEV TO BE DETERMINED BY THE ENGINEER FL ELEV 581.46 (EXIST)
- 77 STA 70+88.06, 44.05' LT EXISTING MANHOLE TO BE REMOVED PROPOSED MANHOLES, TYPE A, 5' DIA W/ TYPE 1 FRAME, CLOSED LID (CONNECT TO EXISTING 18" STORM SEWER) GR ELEV 583.19 FL ELEV 577.13 (EXIST) INV 15" (SOUTH) 579.96
- 78 STA 70+40.64 58.00' RT EXISTING INLET TO BE ADJUSTED GR 582.88 FL ELEV 576.34 (EXIST)

NOTE:  
ALL PIPES ENTER AND EXIT STRUCTURE AT STRUCTURE FLOW LINE ELEVATION UNLESS OTHERWISE NOTED.



|                             |                  |                |           |   |                                      |  |                   |                  |                  |               |  |
|-----------------------------|------------------|----------------|-----------|---|--------------------------------------|--|-------------------|------------------|------------------|---------------|--|
| FILE NAME =                 | USER NAME = paul | DESIGNED - JWS | REVISED - | <b>STATE OF ILLINOIS<br/>DEPARTMENT OF TRANSPORTATION</b> | <b>DRAINAGE PLAN, FAYETTE AVENUE</b> | F.A.I. RTE. 57/70  | SECTION (25-3)I-6 | COUNTY EFFINGHAM | TOTAL SHEETS 839 | SHEET NO. 160 |  |
| PLOT SCALE = 40,0000' / IN. |                  |                |           |   |                                      | SCALE: 1"=20' SHEET NO. 6 OF 8 SHEETS STA. 66+00.00 TO STA. 71+90.00 |                   |                  |                  |               |  |
| PLOT DATE = 6/24/2010       |                  |                |           |   |                                      | CONTRACT NO. 74293   |                   |                  |                  |               |  |
| DATE = 11-05-07             |                  |                |           |   |                                      | FED. ROAD DIST. NO. ILLINOIS FED. AID PROJECT                        |                   |                  |                  |               |  |