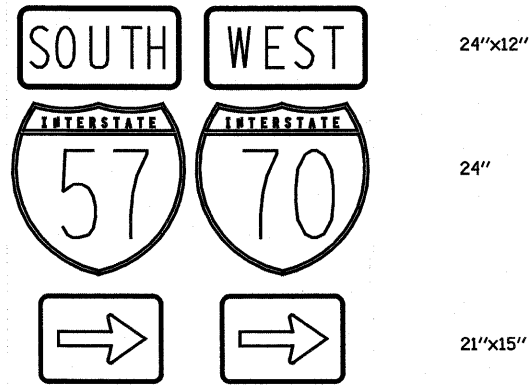
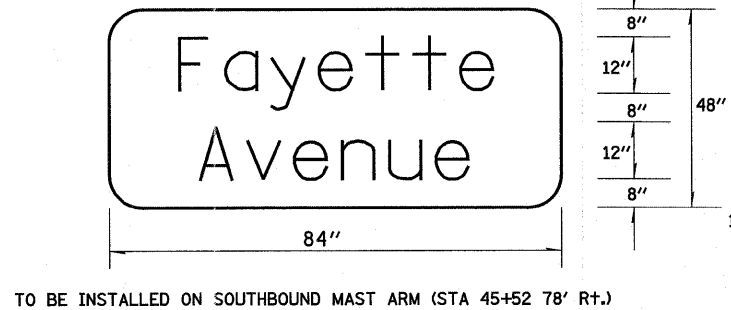


TO BE INSTALLED ON WESTBOUND MAST ARM (STA 46+15 47' Lt.)

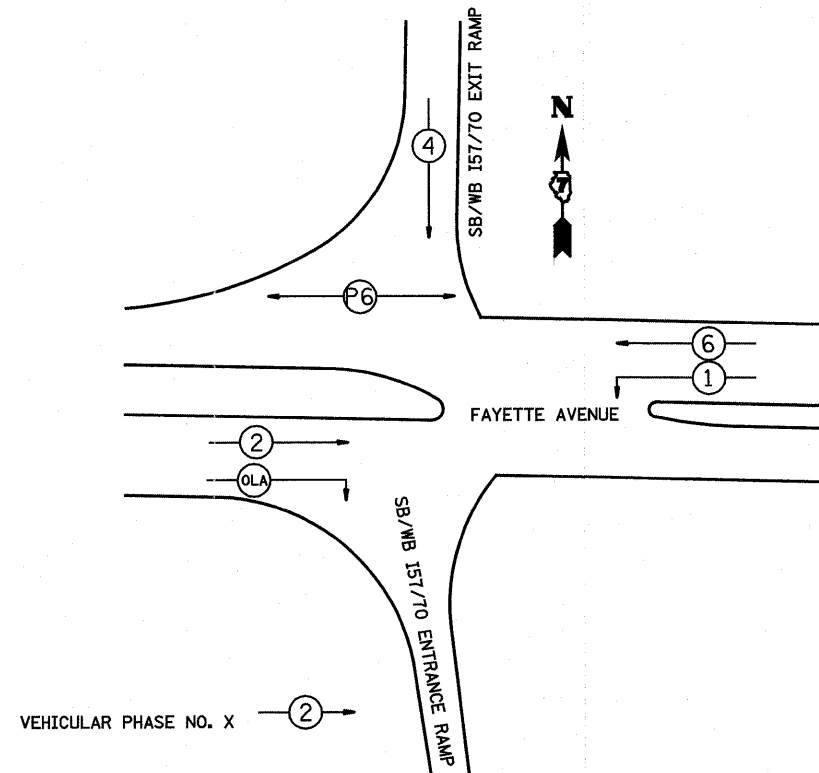


TO BE INSTALLED ON EASTBOUND MAST ARM (STA 46+27 52' Rt.)



1. SIGN SHALL HAVE A WHITE REFLECTORIZED LEGEND AND BORDER ON A GREEN REFLECTORIZED BACKGROUND.
2. UPPER/LOWER CASE LETTERS, SW CLEARVIEW FONT.

SIGN PANEL DETAILS



PHASE DESIGNATION DIAGRAM

BILL OF MATERIALS - FAYETTE AVENUE & SB RAMPS-I57/70 (RAMPS A & D)

ITEM	UNIT	QUANTITY
SIGN PANEL-TYPE 1	SQ FT	33.0
SIGN PANEL-TYPE 2	SQ FT	28.0
SERVICE INSTALLATION, TYPE A	EACH	1.0
CONDUIT IN TRENCH, 3/4" DIA., PVC	FOOT	32.0
CONDUIT IN TRENCH, 1 1/4" DIA., PVC	FOOT	85.0
CONDUIT IN TRENCH, 1 1/2" DIA., PVC	FOOT	516.0
CONDUIT IN TRENCH, 2 1/2" DIA., PVC	FOOT	280.0
CONDUIT IN TRENCH, 4" DIA., PVC	FOOT	8.0
CONDUIT, AUGERED 4" DIA., PVC	FOOT	334.0
CONDUIT ATTACHED TO STRUCTURE, 1 1/2" DIA., GALVANIZED STEEL	FOOT	311.0
HANDHOLE	EACH	7.0
DOUBLE HANDHOLE	EACH	1.0
GULFBOX JUNCTION	EACH	2.0
ELECTRIC CABLE IN CONDUIT, 600 V (XLP-TYPE USE) 1/C NO. 8	FOOT	1724.0
TRENCH AND BACKFILL FOR ELECTRICAL WORK	FOOT	921.0
FULL-ACTUATED CONTROLLER AND TYPE IV CABINET	EACH	1.0
UNINTERRUPTIBLE POWER SUPPLY, EXTENDED	EACH	1.0
TRANSCEIVER-FIBER OPTIC	EACH	1.0
FIBER OPTIC CABLE IN CONDUIT, 62.5/125, 6F	FOOT	857.0
ELECTRIC CABLE IN CONDUIT, SIGNAL NO. 14 3C	FOOT	439.0
ELECTRIC CABLE IN CONDUIT, SIGNAL NO. 14 5C	FOOT	2208.0
ELECTRIC CABLE IN CONDUIT, SIGNAL NO. 14 7C	FOOT	401.0
ELECTRIC CABLE IN CONDUIT, LEAD-IN, NO. 14 1 PAIR	FOOT	2357.0
ELECTRIC CABLE IN CONDUIT, SERVICE NO. 6 2C	FOOT	30.0
TRAFFIC SIGNAL POST, ALUMINUM 12 FT.	EACH	1.0
TRAFFIC SIGNAL POST, ALUMINUM 14 FT.	EACH	3.0
TRAFFIC SIGNAL POST, ALUMINUM 16 FT.	EACH	2.0
STEEL COMBINATION MAST ARM ASSEMBLY AND POLE 28 FT.	EACH	1.0
STEEL COMBINATION MAST ARM ASSEMBLY AND POLE 32 FT.	EACH	1.0
STEEL COMBINATION MAST ARM ASSEMBLY AND POLE 44 FT.	EACH	1.0
CONCRETE FOUNDATION, TYPE A	FOOT	18.0
CONCRETE FOUNDATION, TYPE C	FOOT	3.5
CONCRETE FOUNDATION, TYPE E 30-INCH DIAMETER	FOOT	26.5
CONCRETE FOUNDATION, TYPE E 36-INCH DIAMETER	FOOT	18.5
SIGNAL HEAD, POLYCARBONATE, LED, 1-FACE, 3-SECTION, BRACKET MOUNTED	EACH	4.0
SIGNAL HEAD, POLYCARBONATE, LED, 1-FACE, 3-SECTION, MAST ARM MOUNTED	EACH	6.0
SIGNAL HEAD, POLYCARBONATE, LED, 1-FACE, 5-SECTION, BRACKET MOUNTED	EACH	1.0
SIGNAL HEAD, POLYCARBONATE, LED, 2-FACE, 1-3-SECTION, 1-5-SECTION, BRACKET MOUNTED	EACH	1.0
SIGNAL HEAD, POLYCARBONATE, LED, 2-FACE, 5-SECTION, BRACKET MOUNTED	EACH	1.0
PEDESTRIAN SIGNAL HEAD, POLYCARBONATE, LED, 1-FACE, BRACKET MOUNTED WITH COUNTDOWN TIMER	EACH	2.0
TRAFFIC SIGNAL BACKPLATE, FORMED PLASTIC	EACH	17.0
INDUCTIVE LOOP DETECTOR	EACH	12.0
DETECTOR LOOP, TYPE 1	FOOT	1205.0
LIGHT DETECTOR	EACH	3.0
LIGHT DETECTOR AMPLIFIER	EACH	1.0
PEDESTRIAN PUSH-BUTTON	EACH	2.0
ELECTRIC CABLE IN CONDUIT, GROUNDING, NO. 6 1C	FOOT	698.0
ELECTRIC CABLE IN CONDUIT NO. 20 3/C, TWISTED, SHIELDED	FOOT	556.0