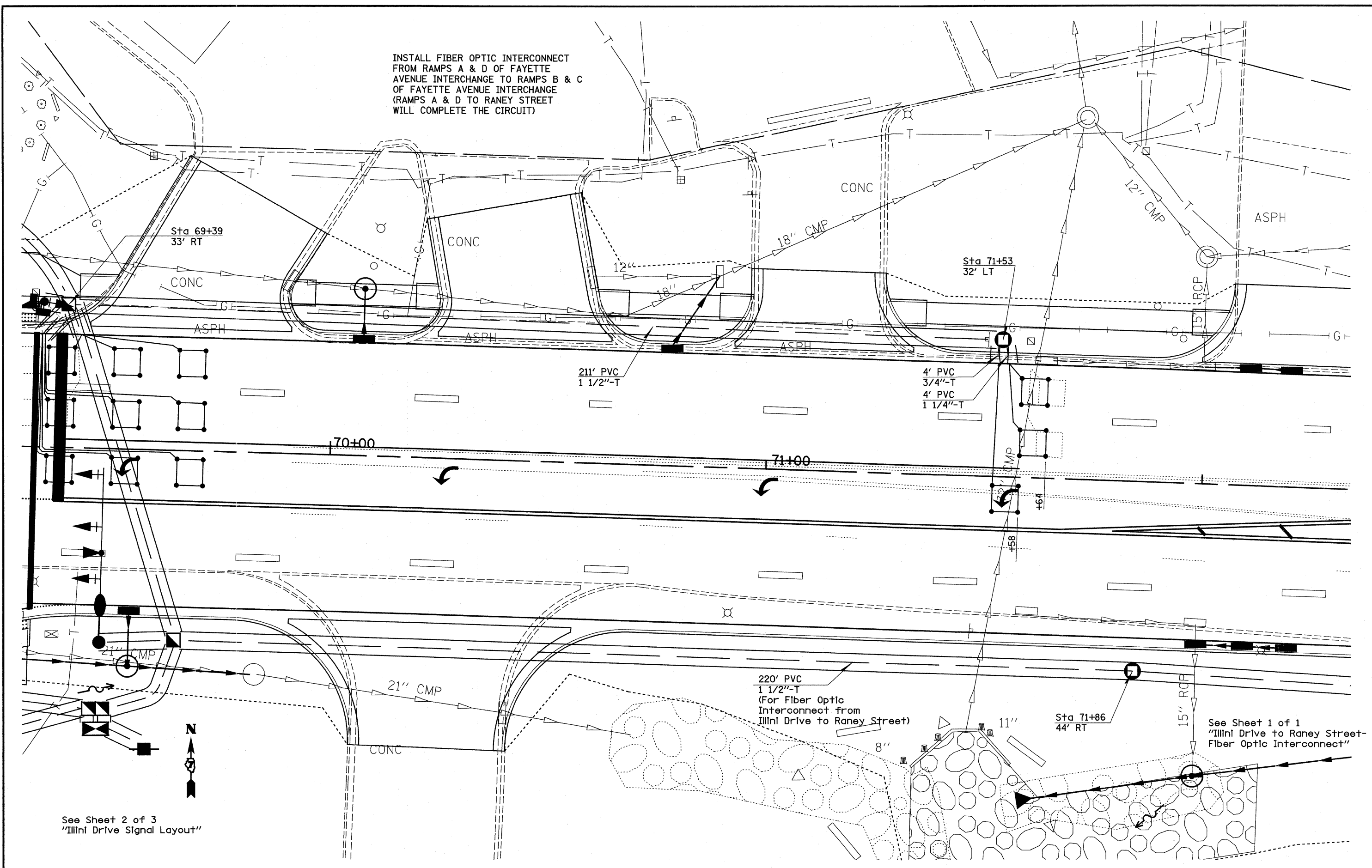


INSTALL FIBER OPTIC INTERCONNECT
 FROM RAMPS A & D OF FAYETTE
 AVENUE INTERCHANGE TO RAMPS B & C
 OF FAYETTE AVENUE INTERCHANGE
 (RAMPS A & D TO RANEY STREET
 WILL COMPLETE THE CIRCUIT)



See Sheet 2 of 3
 "Illini Drive Signal Layout"

See Sheet 1 of 1
 "Illini Drive to Raney Street
 Fiber Optic Interconnect"

FILE NAME =	USER NAME = paul	DESIGNED -	REVISED -	STATE OF ILLINOIS DEPARTMENT OF TRANSPORTATION	ILLINI DRIVE SIGNAL LAYOUT	F.A.I. RTE.	SECTION	COUNTY	TOTAL SHEETS	SHEET NO.	
#FILE#	PLOT SCALE = 200.0000' / IN.	DRAWN -	REVISED -			70	(25-31)-6 & (25-38)-21B	EFFINGHAM	839	255	
	PLOT DATE = 6/24/2010	CHECKED -	REVISED -			CONTRACT NO. 74293					
		DATE -	REVISED -			ILLINOIS FED. AID PROJECT					
					SCALE:	SHEET NO. 3 OF 3 SHEETS	STA.	TO STA.			