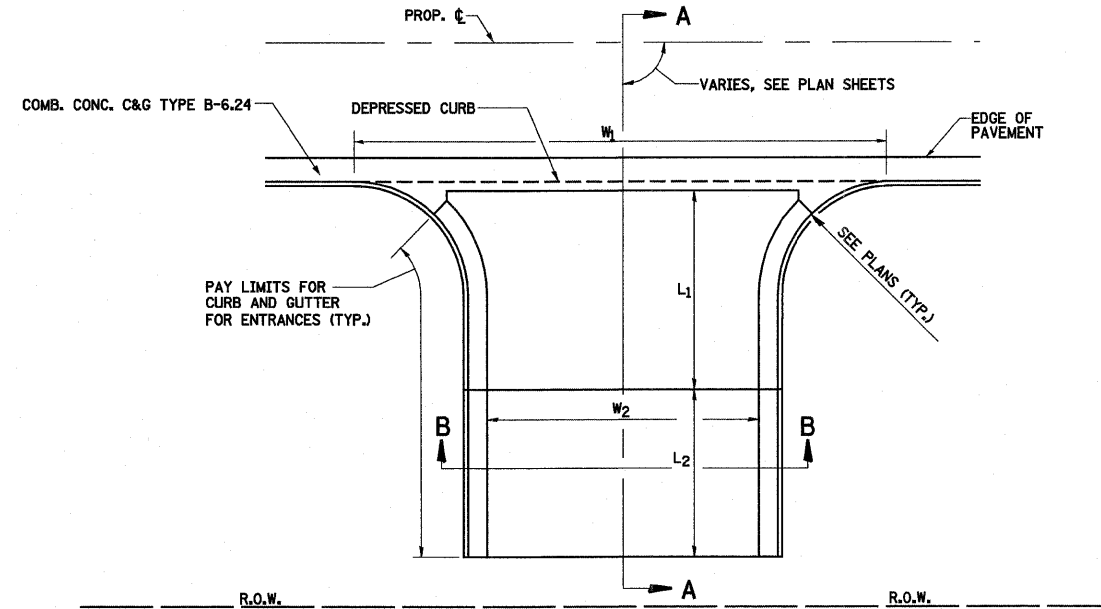
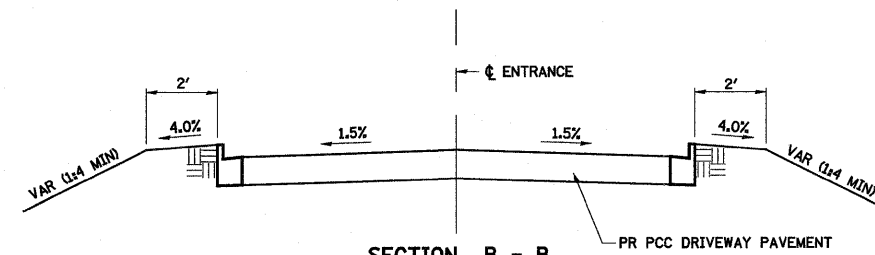


**SECTION A-A
FOR EX PC CONC CE**



**PLAN - URBAN PE & CE
RADIUS RETURNS**



SECTION B - B

ENTRANCE SCHEDULE

| LOCATION | TYPE | L1 | L2 | W1 | W2 | PORTLAND CEMENT CONCRETE DRIVEWAY PAVEMENT, 8 INCH (SQ YD) | AGGREGATE FOR TEMPORARY ACCESS (TON) | PAVEMENT FABRIC (SQ YD) | PROTECTIVE COAT (SQ YD) |
|----------|-------|-------|-------|-------|-------|---|--|-------------------------------|-------------------------------|
| 37+00.44 | F. R. | 10.1' | 8.7' | 66.1' | 42.7' | 103 | 46 | 103 | 103 |
| 70+23.20 | CE | 10.0' | 28.0' | 91.0' | 30.9' | 161 | | 161 | 161 |
| SUBTOTAL | | | | | | 264 | 46 | 264 | 264 |
| TOTAL | | | | | | 264* | 46* | 264* | 264* |

*NOT A TOTAL QUANTITY

GENERAL NOTES:

1. THE COMBINATION CONCRETE GUTTER SHALL HAVE A DEPRESSED CURB THROUGH THE ENTRANCE.
2. THE COST OF FURNISHING AND INSTALLING THE 3/4" PREFORMED EXPANSION JOINT FILLER AND REINFORCEMENT BARS SHALL BE INCLUDED IN THE COST OF P.C.C. DRIVEWAY PAVEMENT.
3. THE REMOVAL AND DISPOSAL OF THE DRIVEWAY PAVEMENT STRUCTURE, INCLUDING SURFACE, BASE, AND SUB-BASE, SHALL BE INCLUDED IN THE CONTRACT UNIT PRICE FOR "DRIVEWAY PAVEMENT REMOVAL."

| | | | | | | | | | | | | |
|---|------------------|-----------------|-----------|---|---------------------------------------|--|-------------------------|---------------------------|---------------------------|-----------|--------------|-----------|
| FILE NAME = | USER NAME = paul | DESIGNED - JWS | REVISED - | STATE OF ILLINOIS DEPARTMENT OF TRANSPORTATION | ENTRANCE DETAILS, FAYETTE AVE. | | | F.A.I. RTE. | SECTION | COUNTY | TOTAL SHEETS | SHEET NO. |
| S:\Projects\403-00072-57-70\ dgn\Fayette\entrance.dwg | | DRAWN - PDB | REVISED - | | | | | 57/70 | (25-3) I-6 | EFFINGHAM | 839 | 325 |
| PLOT SCALE = 40,0000' / IN. | | CHECKED - BRM | REVISED - | | | | | CONTRACT NO. 74293 | | | | |
| PLOT DATE = 6/24/2010 | | DATE - 11-05-07 | REVISED - | | | | | FED. ROAD DIST. NO. | ILLINOIS FED. AID PROJECT | | | |
| | | | | SCALE: 1"=20' | | | SHEET NO. 1 OF 2 SHEETS | | STA. TO STA. | | | |