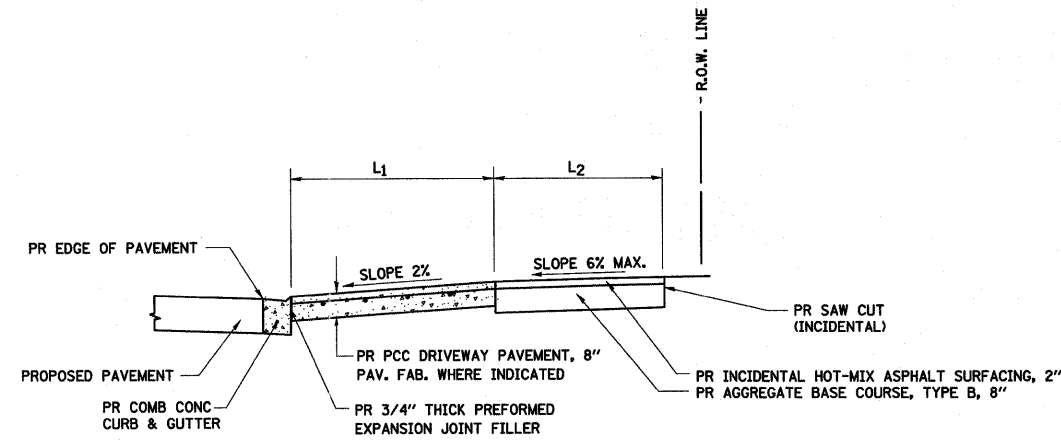
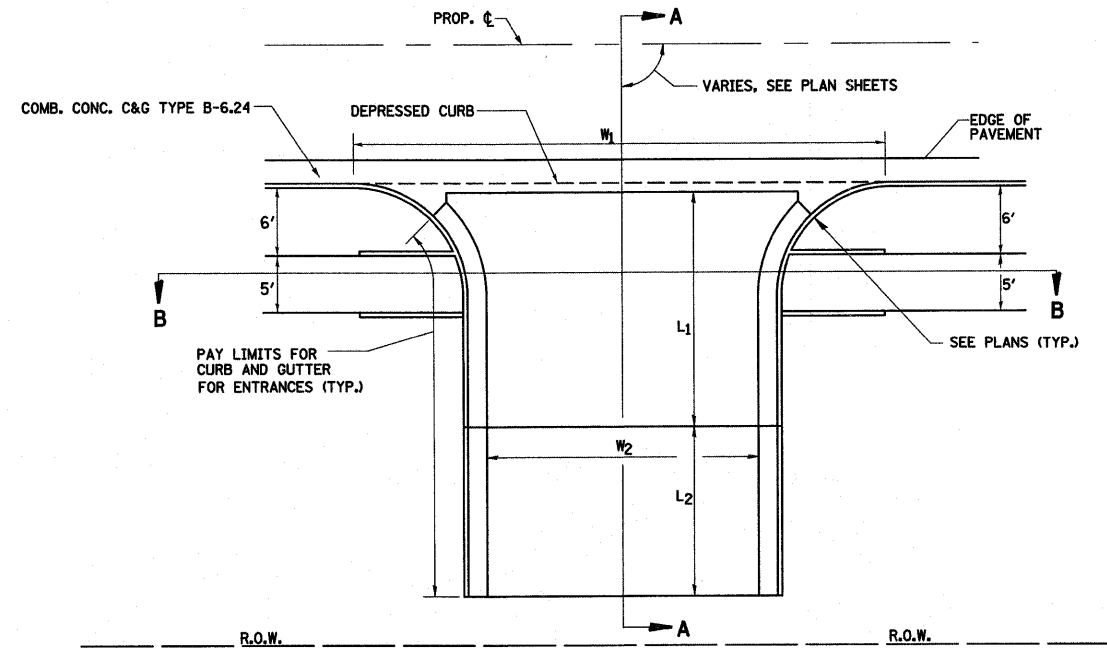


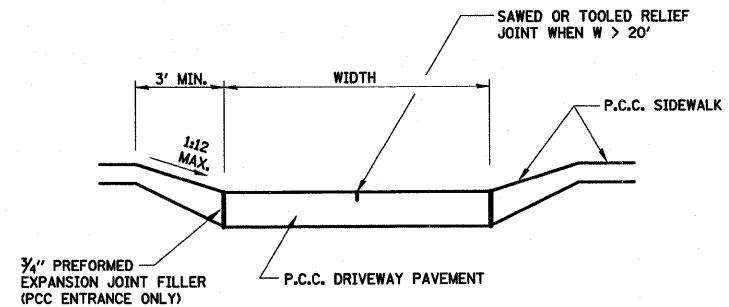
**SECTION A-A
FOR EX PC CONC CE**



**SECTION A-A
FOR EX ASPHALT CE**



**PLAN - URBAN PE & CE
RADIUS RETURNS**



SECTION B-B

ENTRANCE SCHEDULE

LOCATION	TYPE	L1	L2	W1	W2	PORTLAND CEMENT CONCRETE DRIVEWAY PAVEMENT, 8 INCH (SQ YD)	BITUMINOUS MATERIALS (PRIME COAT) (GALLON)	INCIDENTAL HOT-MIX ASPHALT SURFACING (TON)	AGGREGATE BASE COURSE, TYPE B, 8" (SQ YD)	PAVEMENT FABRIC (SQ YD)	AGGREGATE FOR TEMPORARY ACCESS (TON)	PROTECTIVE COAT (SQ YD)
69+64.35	CE	13.4'	21.7'	63.8'	30.5'	125				125		125
70+44.51	CE	11.7'	18.7'	56.0'	30.7'	107				107		107
71+11.10	CE	11'	6.5'	60.5'	25.6'	58				58	26	58
72+23.42	CE	11'	6.7'	72.6'	32.6'	51	9.3	3	25	51		51
SUBTOTAL						341	9	3	25	341	26	341
TOTAL						341*	9*	3*	25*	341*	26*	341*

*NOT A TOTAL QUANTITY

GENERAL NOTES:

1. THE COMBINATION CONCRETE GUTTER SHALL HAVE A DEPRESSED CURB THROUGH THE ENTRANCE.
2. THE COST OF FURNISHING AND INSTALLING THE 3/4" PREFORMED EXPANSION JOINT FILLER AND REINFORCEMENT BARS SHALL BE INCLUDED IN THE COST OF P.C.C. DRIVEWAY PAVEMENT.
3. THE REMOVAL AND DISPOSAL OF THE DRIVEWAY PAVEMENT STRUCTURE, INCLUDING SURFACE, BASE, AND SUB-BASE, SHALL BE INCLUDED IN THE CONTRACT UNIT PRICE FOR "DRIVEWAY PAVEMENT REMOVAL."