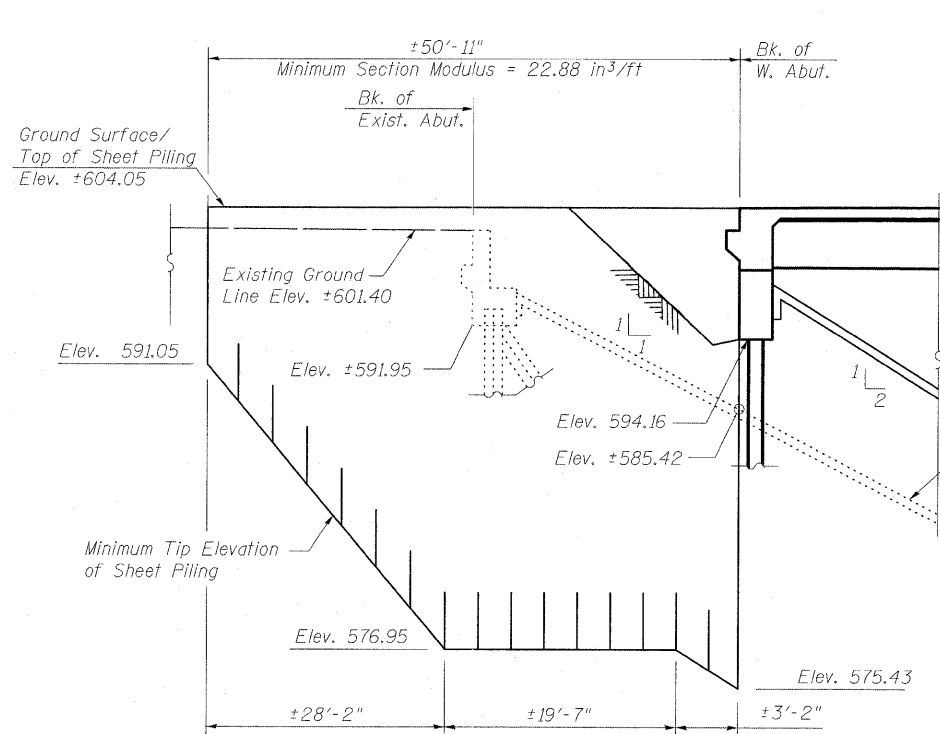
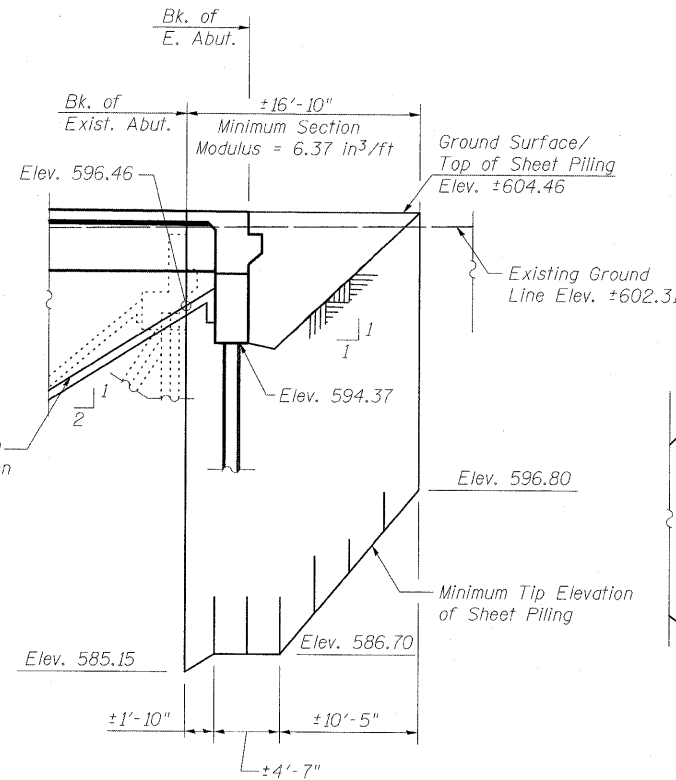


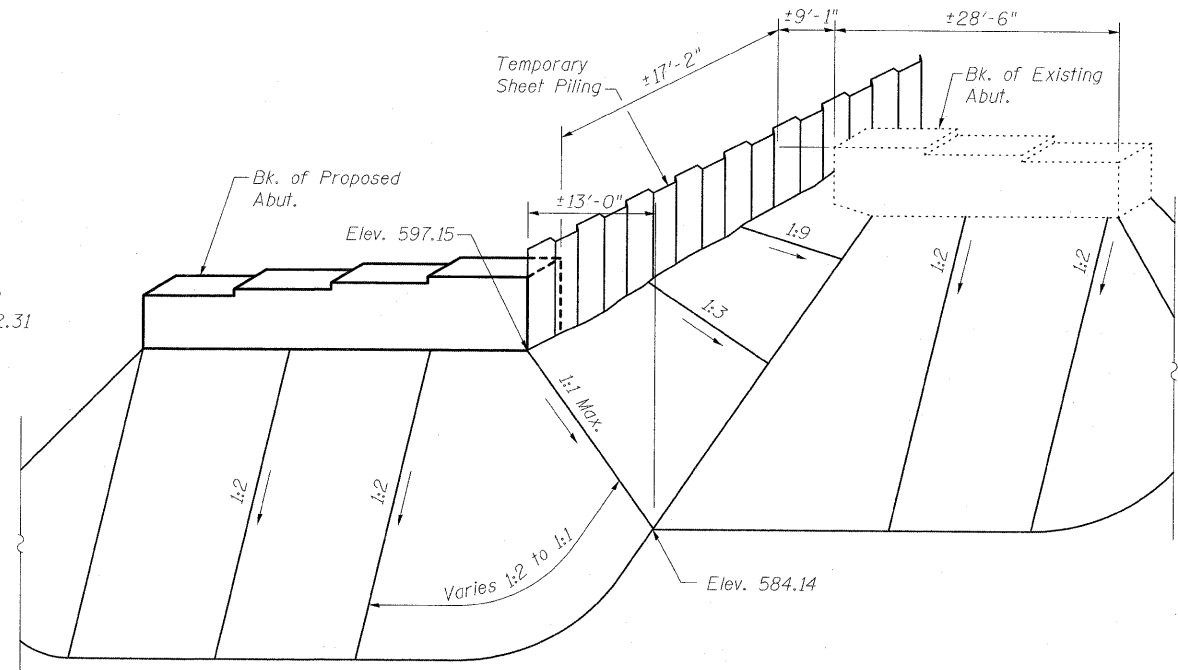
STATE OF ILLINOIS
DEPARTMENT OF TRANSPORTATION



**WEST ABUTMENT SHEET
PILING ELEVATION**

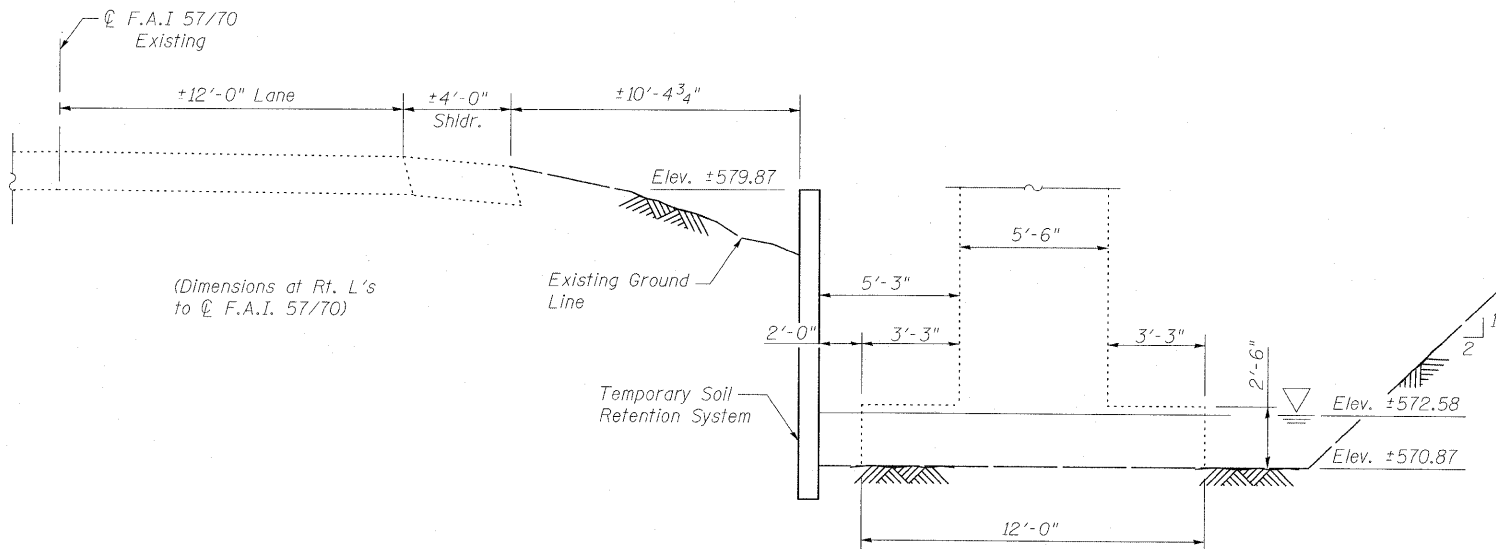


**EAST ABUTMENT SHEET
PILING ELEVATION**

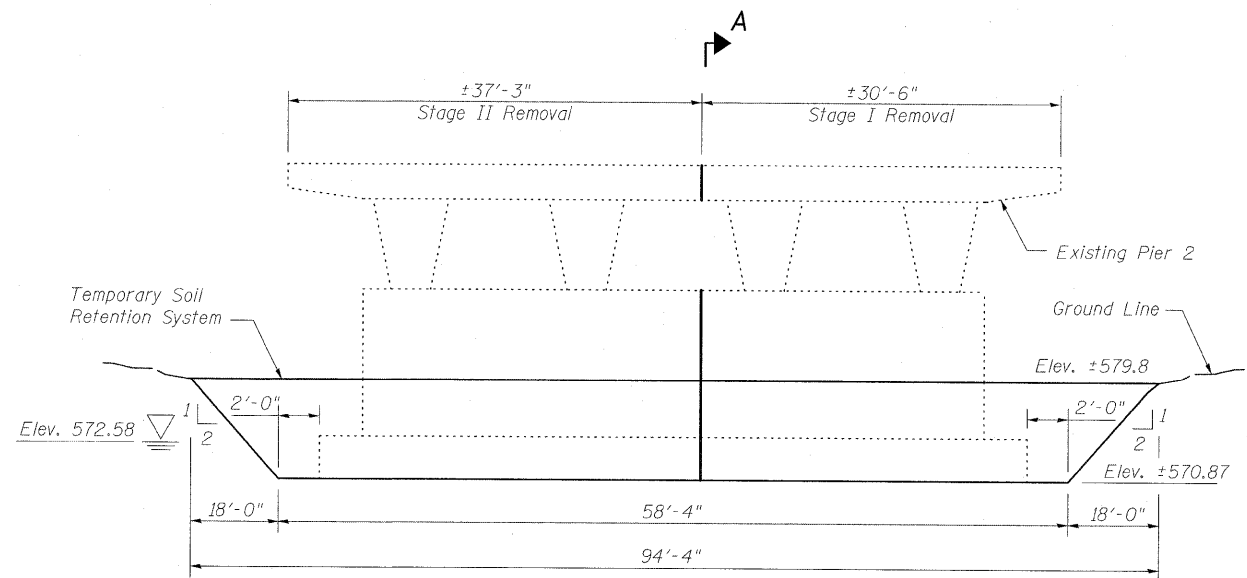


WEST ABUTMENT STAGE I
(Showing Soil Slopes)
(Slope East Abutment soil as needed)

TEMPORARY SHEET PILING ELEVATION



SECTION A-A



TEMPORARY SOIL RETENTION SYSTEM ELEVATION
(Looking East)

BILL OF MATERIAL

Item	Unit	Quantity
Temporary Sheet Piling	Sq. Ft.	1429
Temporary Soil Retention System	Sq. Ft.	687

**TEMPORARY SHORING DETAILS
STRUCTURE NO. 025-0106**

DESIGNED	A.C.S.
CHECKED	B.B.
DRAWN	W.J.S.
CHECKED	C.J.F.

Notes:

If the Contractor chooses to alter the temporary cantilevered sheet piling design requirements shown on the plans, a design submittal including plan details and calculations will be required for review and acceptance by the Engineer.
For the Pier, the cantilevered sheet piling design does not appear feasible and additional members or other retention systems may be necessary. The Contractor shall submit a temporary soil retention system design including plan details and calculations for review and acceptance by the Engineer.



**BERNARDIN
LOCHMUELLER &
ASSOCIATES, INC.**

3 Oak Drive
Mareville, IL 62968-5685
Local (618) 288-4665
Fax 618-288-4666

SHEET NO. 4 38 SHEETS	F.A.I. RTE.	SECTION	COUNTY	TOTAL SHEETS	SHEET NO.
	57/70	(25-3HB-2)B	EFFINGHAM	839	333
SN 025-0106			CONTRACT NO. 74293		
FED. ROAD DIST. NO. 7 ILLINOIS FED. AID PROJECT					