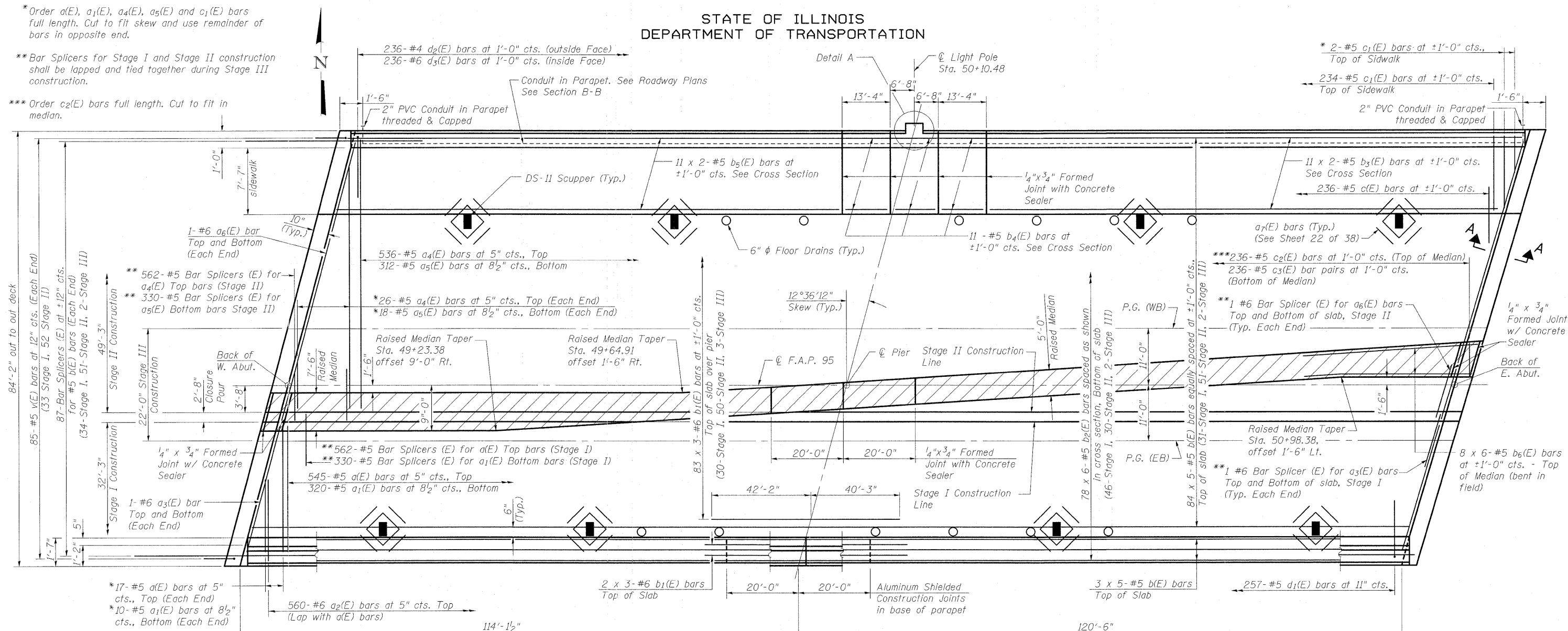


STATE OF ILLINOIS
DEPARTMENT OF TRANSPORTATION

* Order a(E), a₁(E), a₄(E), a₅(E) and c₁(E) bars full length. Cut to fit skew and use remainder of bars in opposite end.

** Bar Splicers for Stage I and Stage II construction shall be lapped and tied together during Stage III construction.

*** Order c₂(E) bars full length. Cut to fit in median.



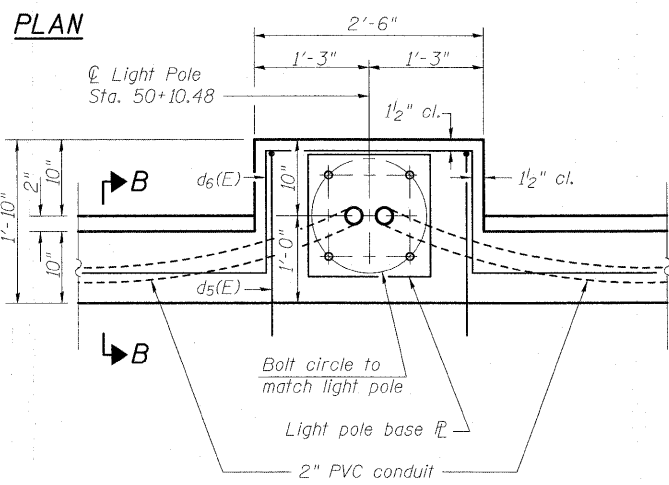
MINIMUM BAR LAP

#5 bar = 2'-6"
#6 bar = 3'-0"

Indicates Superimposed Raised Median
See Sheet 16 of 38 for Raised Median Reinforcement.

Notes:
See Sheet 34 of 38 for Bar Splicer Details.
See Sheet 1 of 38 for drainage scupper and floor drain spacing.
See Sheet 16 of 38 for superstructure details and Bill of Material.
Bars indicated thus 84 x 5-#5 etc. indicates 84 lines of bars with 5 lengths per line.
See Sheets 15 thru 17 of 38 for parapet reinforcement.
For Section A-A and diaphragm details see Sheets 26 and 27 of 38.
See Sheet 20 of 38 for drainage Scupper details.
See Sheet 22 of 38 for floor drain details.
Cut longitudinal reinforcement to clear drainage scuppers.

**SUPERSTRUCTURE
STRUCTURE NO. 025-0106**

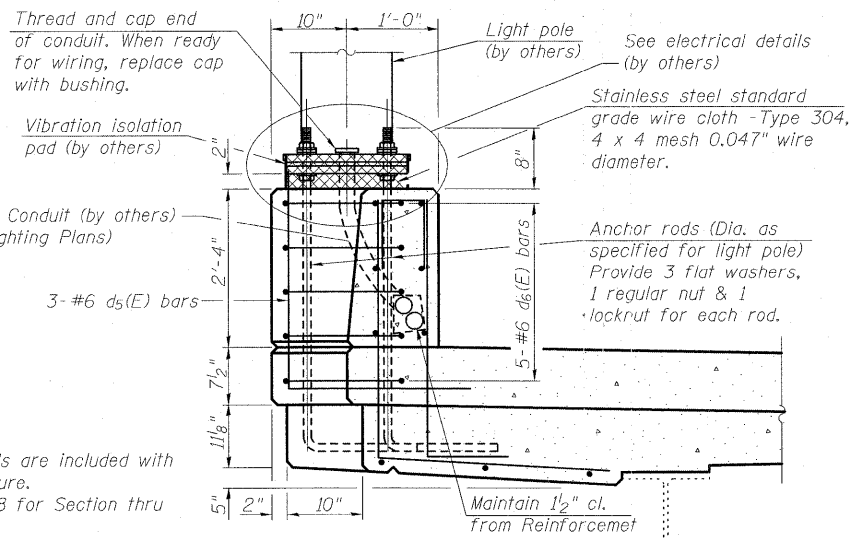


DETAIL A

**BERNARDIN
LOCHMUELLER &
ASSOCIATES, INC.**

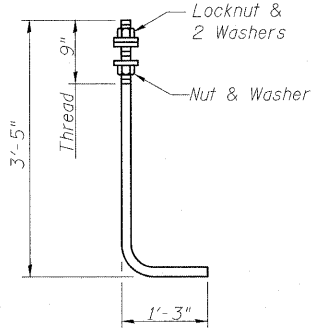
3 Oak Drive
Mareville, IL 62452-5635
Local (618) 398-4656
Fax 618-288-4666

SHEET NO. 14 38 SHEETS	F.A.I. RTE.	SECTION	COUNTY	TOTAL SHEETS	SHEET NO.
	57/70	(25-3HB-2)B	EFFINGHAM	839	343
SN 025-0106			CONTRACT NO. 74293		
FED. ROAD DIST. NO. 7 ILLINOIS FED. AID PROJECT					



SECTION B-B

(North Light Pedestal)



ANCHOR ROD

Diameter as specified for light poles.
(ASTM F 1554 Grade 105)

DESIGNED	A.C.S.
CHECKED	B.B.
DRAWN	W.J.S.
CHECKED	C.J.F.

Notes:
Cost of anchor rods are included with Concrete Superstructure.
See Sheet 16 of 38 for Section thru Parapets.
See Sheet 16 of 38 for Section thru Sidewalk.

10/26/05 AM 8/12/2010 10:25:06 for stp14.dgn