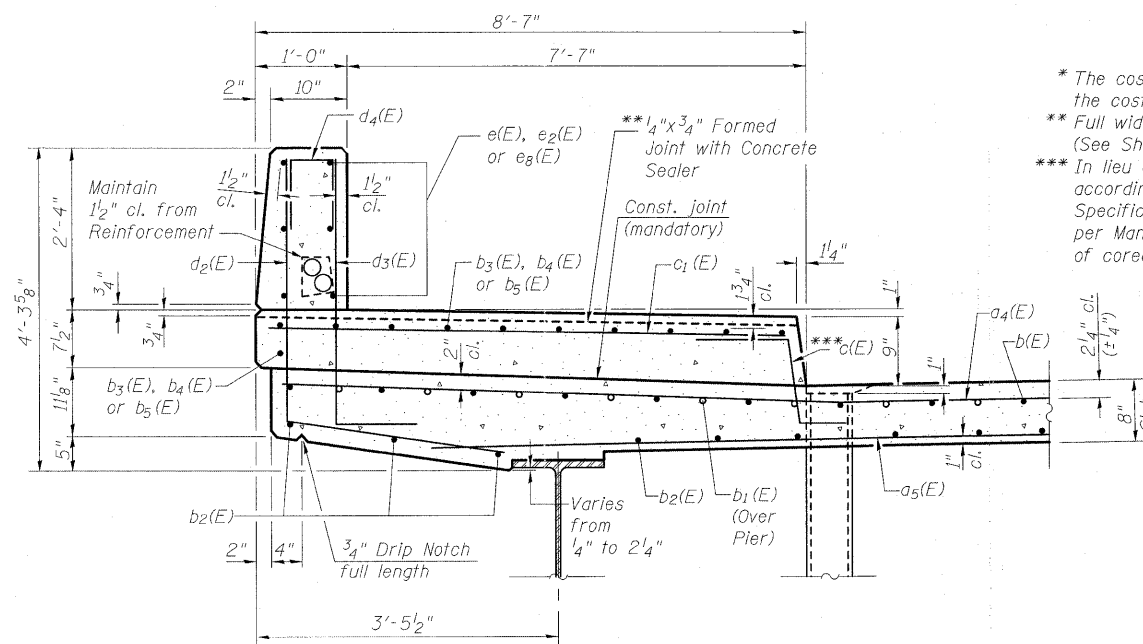
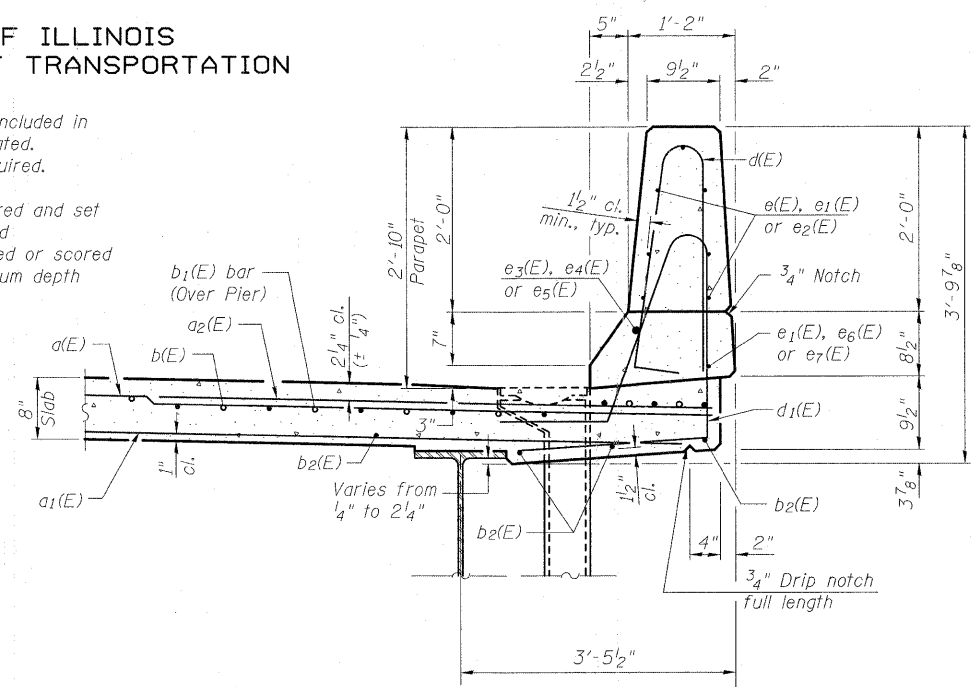


STATE OF ILLINOIS
DEPARTMENT OF TRANSPORTATION



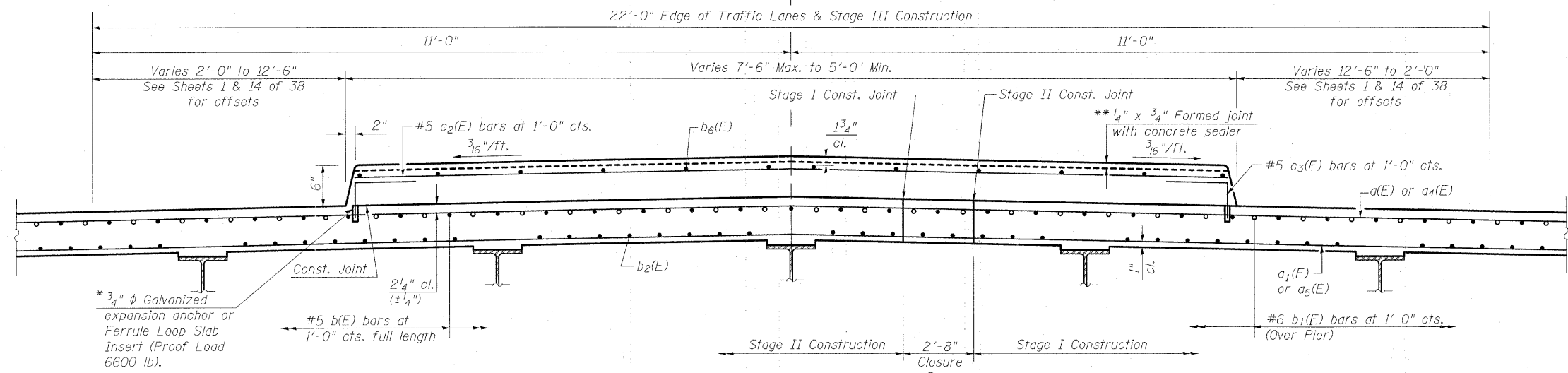
SECTION THRU SIDEWALK



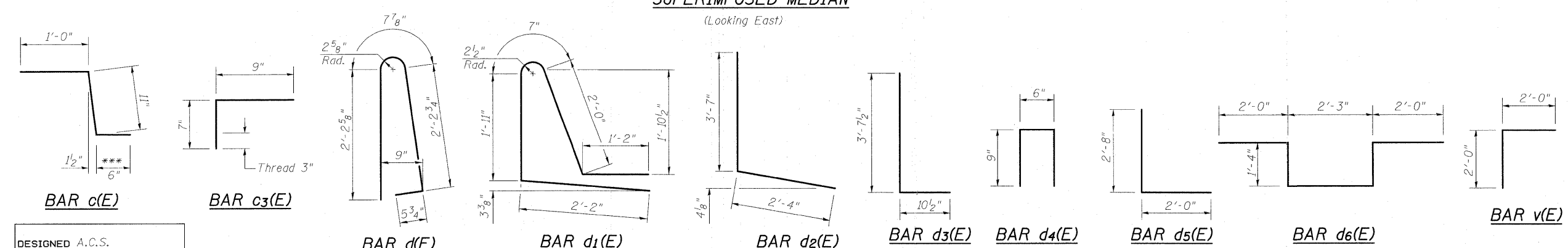
SECTION THRU SOUTH PARAPET

SUPERSTRUCTURE
BILL OF MATERIAL

Bar	No.	Size	Length	Shape
a1(E)	562	#5	31'-10"	—
a2(E)	330	#5	31'-2"	—
a3(E)	560	#6	6'-6"	—
a4(E)	4	#6	32'-7"	—
a5(E)	562	#5	48'-10"	—
a6(E)	330	#5	48'-0"	—
a7(E)	4	#6	52'-8"	—
a8(E)	64	#5	1'-6"	—
b1(E)	435	#5	48'-11"	—
b2(E)	255	#6	29'-6"	—
b3(E)	468	#5	41'-2"	—
b4(E)	22	#5	51'-5"	—
b5(E)	33	#5	13'-1"	—
b6(E)	22	#5	49'-2"	—
b7(E)	48	#5	41'-7"	—
c1(E)	236	#5	2'-5"	—
c2(E)	236	#5	8'-2"	—
c3(E)	236	#5	6'-10"	—
c4(E)	472	#5	1'-4"	—
d1(E)	257	#5	5'-7"	—
d2(E)	257	#5	7'-10"	—
d3(E)	236	#4	5'-10"	—
d4(E)	236	#6	4'-6"	—
d5(E)	54	#4	2'-0"	—
d6(E)	3	#6	4'-8"	—
d7(E)	5	#6	8'-11"	—
e1(E)	78	#4	16'-6"	—
e2(E)	16	#4	19'-9"	—
e3(E)	78	#4	15'-5"	—
e4(E)	3	#8	36'-11"	—
e5(E)	2	#8	19'-9"	—
e6(E)	3	#8	34'-9"	—
e7(E)	3	#4	34'-9"	—
e8(E)	3	#4	32'-8"	—
e9(E)	18	#4	13'-1"	—
m1(E)	10	#6	32'-9"	—
m2(E)	40	#6	11'-9"	—
m3(E)	18	#6	8'-5"	—
m4(E)	6	#6	3'-3"	—
m5(E)	10	#6	52'-11"	—
s1(E)	174	#5	6'-11"	—
s2(E)	156	#4	13'-0"	—
v1(E)	170	#5	4'-0"	—
Reinforcement Bars, Epoxy Coated		Pound	158670	
Concrete Superstructure		Cu. Yds.	721.0	
Bar Splicers		Each	1982	



SUPERIMPOSED MEDIAN
(Looking East)



SUPERSTRUCTURE DETAILS
STRUCTURE NO. 025-0106

DESIGNED	A.C.S.
CHECKED	B.B.
DRAWN	W.J.S.
CHECKED	C.J.F.

BERNARDIN LOCHMUELLER & ASSOCIATES, INC.
3 Oak Drive
Maryville, IL 62452-5685
Local (618) 288-4005
Fax 618-288-4666

SHEET NO. 16 38 SHEETS	F.A.I. RTE.	SECTION	COUNTY	TOTAL SHEETS	SHEET NO.
	57/70	(25-3HB-2)B	EFFINGHAM	839	345
SN 025-0106			CONTRACT NO. 74293		
FED. ROAD DIST. NO. 7 ILLINOIS FED. AID PROJECT					

10:26:48 AM 8/12/2010 ...0250106/03-01-16.dgn