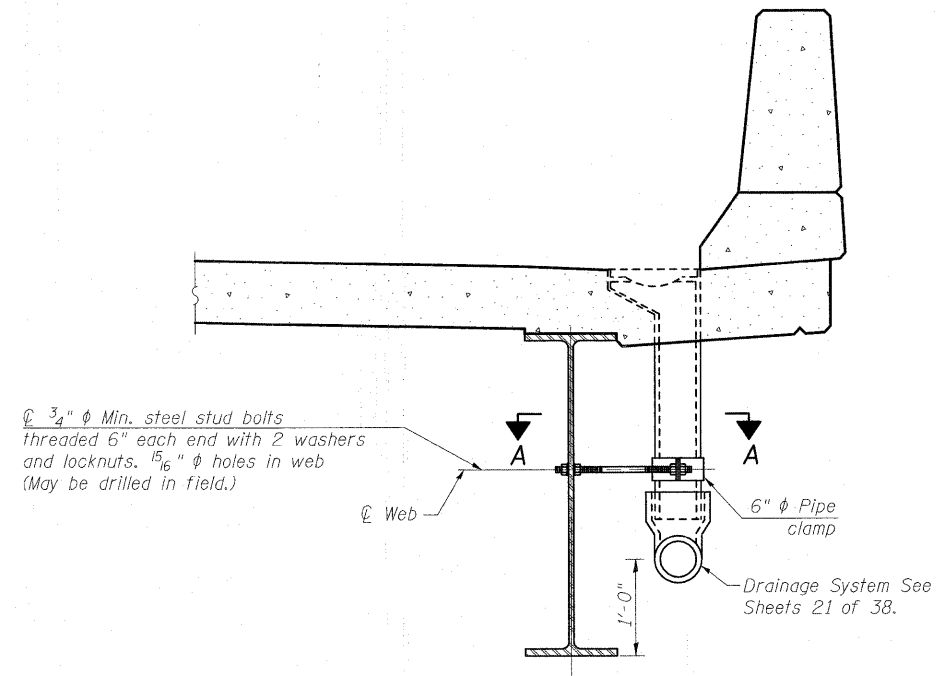


STATE OF ILLINOIS  
DEPARTMENT OF TRANSPORTATION



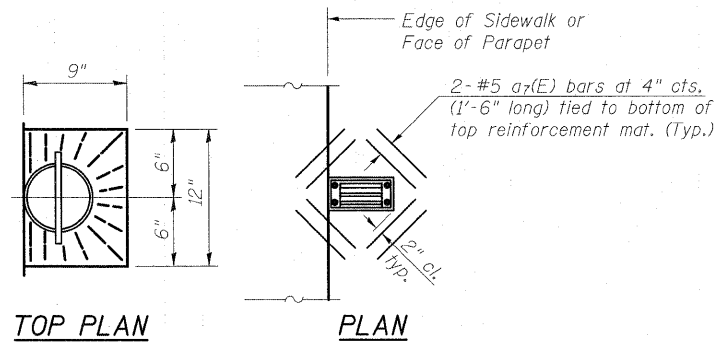
SECTION THRU SIDEWALK



SECTION THRU SOUTH PARAPET

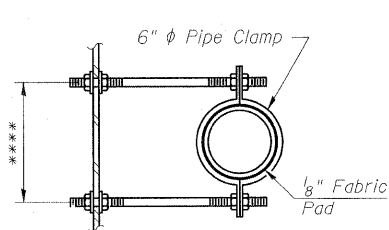
Notes:

Drains & Bridge Drainage System shall be located clear of all diaphragms.  
The exterior surfaces of the floor drains shall be painted with the finish coat as specified in the special provisions for Cleaning and Painting New Metal Structures. The exterior surfaces of the drains shall be cleaned according to the Society of Protective Coatings' Spec. SSPC-SP1 prior to painting.  
Fiberglass pipe shall conform to ASTM D 2996, with short-time rupture strength hoop tensile stress of 30,000 p.s.i. minimum.  
Galvanize clamping device according to AASHTO M232. Cost of clamping device and inserts is included with Floor Drains.  
For Scupper Details See Sheet 20 of 38.



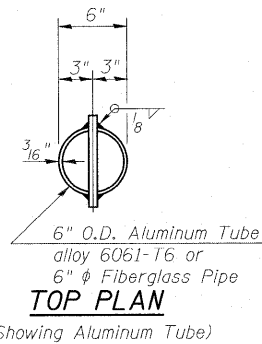
TOP PLAN

PLAN



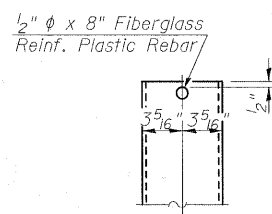
SECTION A-A

\*\*\*\*Dimension as required by Pipe Clamp

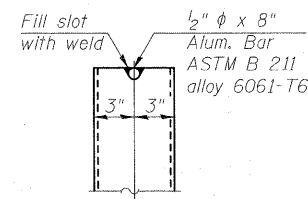


TOP PLAN

(Showing Aluminum Tube)



FIBERGLASS PIPE



ALUMINUM TUBE

BILL OF MATERIAL

Item	Unit	Total
Drainage System	L. Sum	1
Floor Drains	Each	12

DESIGNED	A.C.S.
CHECKED	B.B.
DRAWN	W.J.S.
CHECKED	C.J.F.



BERNARDIN  
LOCHMUELLER &  
ASSOCIATES, INC.

3 Oak Drive  
Maryville, IL 62962-2665  
Local (618) 398-4665  
Fax 618-398-4666

DRAINAGE SYSTEM  
STRUCTURE NO. 025-0106

SHEET NO. 22	F.A.I. RTE.	SECTION	COUNTY	TOTAL SHEETS	SHEET NO.
	57/70	(25-3HB-2)B	EFFINGHAM	839	351
38 SHEETS	SN 025-0106		CONTRACT NO. 74293		
FED. ROAD DIST. NO. 7 ILLINOIS FED. AID PROJECT					